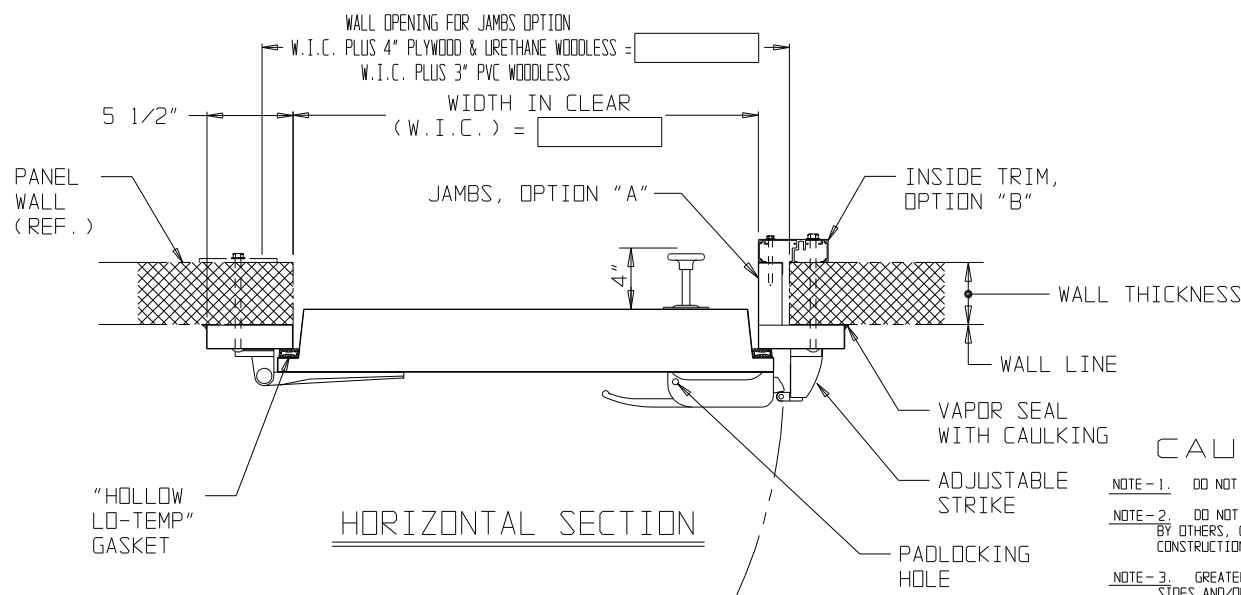
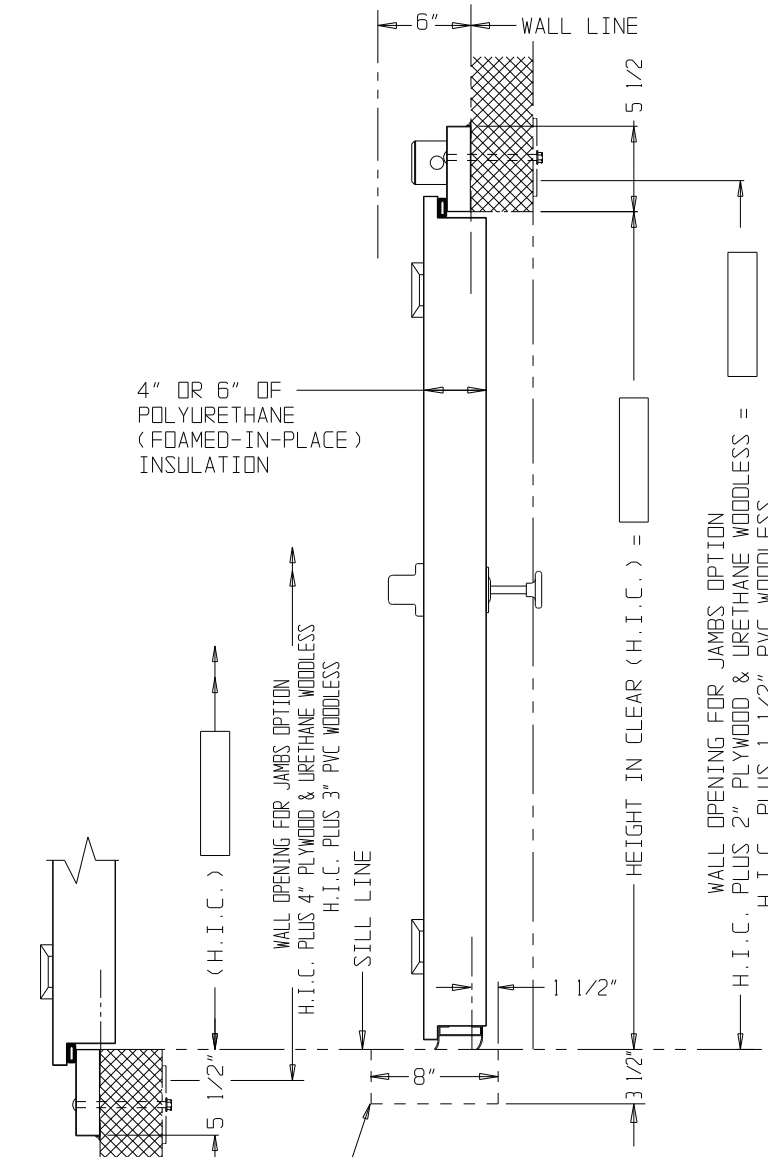


FRONT ELEVATION

LEFT HAND SWING SHOWN - RIGHT HAND OPPOSITE
FREEZER DOOR SHOWN - COOLER DOOR SIMILAR



HORIZONTAL SECTION



VERTICAL SECTION
(HIGH SILL)

VERTICAL SECTION
(FLUSH SILL)

DOOR NUMBER	QUANTITY	SIZE IN CLEAR		SWING	INSULATION		TEMPERATURE CONDITIONS							
		W.I.C.	H.I.C.		L.H.	R.H.	4"	6"	FRONT	BACK				

OPTIONS (CONTINUED)

L. OTHER

CAUTION

- NOTE-1. DO NOT SCALE DIMENSIONS.
- NOTE-2. DO NOT SCALE BUICKS. BUICK SIZE AND DESIGN BY OTHERS, GOVERNED BY DOOR SIZE, WALL CONSTRUCTION AND CEILING HEIGHT.
- NOTE-3. GREATER CLEARANCE MAY BE REQUIRED AT SIDES AND/OR HEAD BY CERTAIN JOB CONDITIONS SUCH AS HIGHER SILL, BEVEL OR OBSTRUCTIONS NECESSITATING COCKING OR TILTING FRAME INTO OPENING, ETC.

NOTES:

- DOOR PANEL "JAMIFOAM" POLYURETHANE INSULATED.
R32 @ 20*F 4" INSULATED
R48 @ 20*F 6" INSULATED
A. COOLER DOOR 4" STANDARD
B. FREEZER DOOR 4" STANDARD
C. FREEZER DOOR 6" OPTIONAL
- SILL TYPE:
A. FLUSH SILL
B. HIGH SILL
- "FROSTOP" LOCATION FOR FREEZER DOORS
A. FLUSH SILL - 3 SIDES OF FRAME AND BOTTOM OF DOOR. (STANDARD)
3 SIDES OF FRAME AND CHANNEL SILL. (OPTIONAL)
B. HIGH SILL - 4 SIDES OF FRAME.
C. BLAST FREEZER (FLUSH SILL) - 3 SIDES OF FRAME, CHANNEL SILL AND BOTTOM OF DOOR.
D. BLAST FREEZER (HIGH SILL) - 4 SIDES OF FRAME.
- DOOR, FRONT AND BACK, TO BE #26 GA. GALVANIZED STUCCO PATTERN EMBOSSED STEEL WITH BAKED-ON WHITE ENAMEL FINISH, AS STANDARD.
OPTIONAL:
A. STAINLESS STEEL
B. ALUMINUM
C. PAINTED STEEL - COLOR
- CASING CONSTRUCTION (MUST MATCH JAMB CONSTRUCTION)
PLYWOOD METAL CLAD (1 1/2" X 5 1/2")
URETHANE WOODLESS (1" X 5 1/2")
PVC WOODLESS (1" X 5 1/2", REQUIRES JAMBS)
- DOOR HINGES (CAM-LIFT)
A. CORROSION PROTECTED FINISH (STANDARD)
B. BRIGHT ANODITE FINISH (OPTIONAL)
- DOOR LATCH
A. CORROSION PROTECTED FINISH (STANDARD)
B. CHROME PLATED FINISH (OPTIONAL)
- OPTIONS:
A. JAMBS, CLAD TO MATCH DOOR
SPECIFY WALL THICKNESS _____
B. INSIDE TRIM, CLAD TO MATCH DOOR
C. JAMB & TRIM CONSTRUCTION
EXTRUDED ALUMINUM (TRIM ONLY, NOT WITH PVC)
PLYWOOD METAL CLAD
URETHANE WOODLESS
PVC WOODLESS
D. DOOR SEALED TO MEET M.I.D. SPECIFICATIONS
E. KICKPLATE, DOOR FRONT
GAUGE _____ HEIGHT _____
F. KICKPLATE, DOOR BACK
GAUGE _____ HEIGHT _____
G. KICKPLATE, FRAME
GAUGE _____ HEIGHT _____
H. VIEW WINDOW, 12" X 14" STANDARD
QUANTITY OF LAYERS _____
J. HIGH HEAT INSULATION
K. DOE COMPLIANT (7" TALL HEAD CASING REQ'D.)

CUSTOMER:

SCALE(S) NONE	JOB NAME		
DATE	DRAWN		
CHECKED	APPROVED	TITLE	
JAMISON DOOR COMPANY		PLYFOAM II	
P. O. BOX 70		INFITTING SWINGING	
HAGERSTOWN, MARYLAND 21741		DOOR	
		DATE	
		BY	
		REVISIONS	
		NO. H4407286E	

S/O