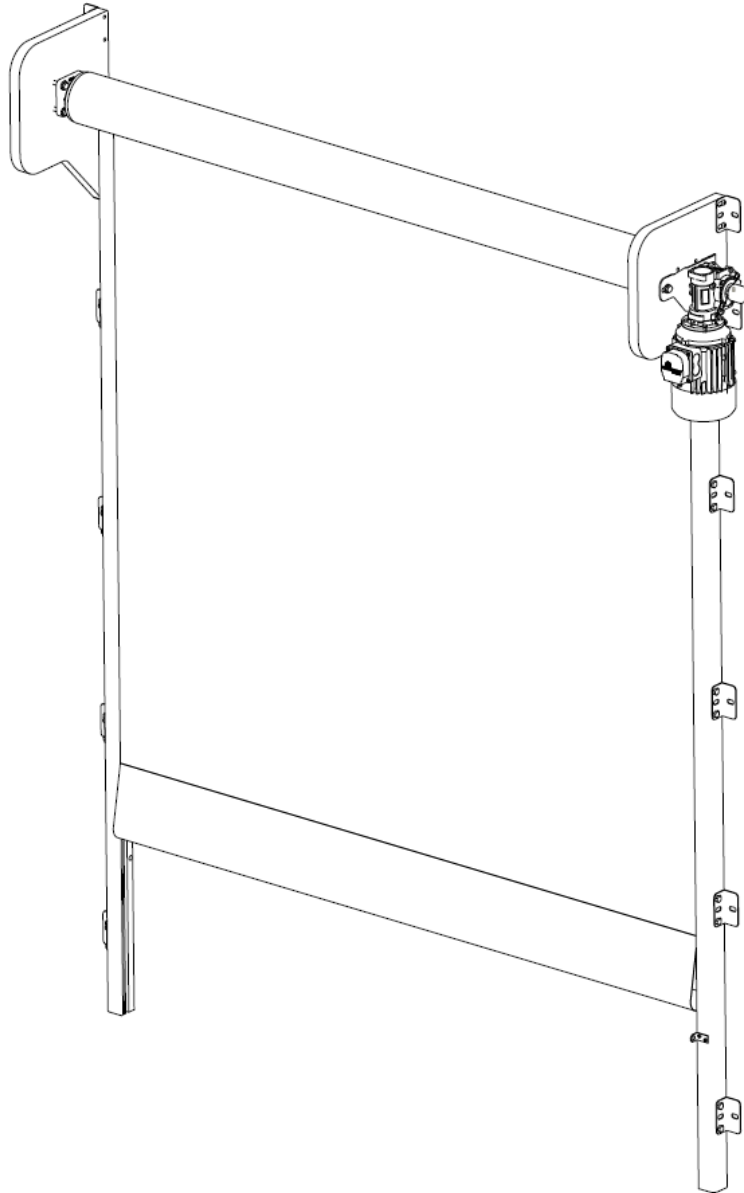


JAMISON-B.M.P. INDUSTRIAL RAPID DOORS DynamicRoll® PE Replacement Parts



JAMISON DOOR COMPANY
P.O. BOX 70
HAGERSTOWN, MARYLAND 21741
USA

1-800-532-3667 301-733-3100

INTERNET: <http://www.JamisonDoor.com>

E-MAIL: Contact@JamisonDoor.com

**AFTER INSTALLING THE DOOR PLEASE FORWARD TO
THE MAINTENANCE DEPARTMENT OR OWNER.**

THIS PAGE LEFT BLANK

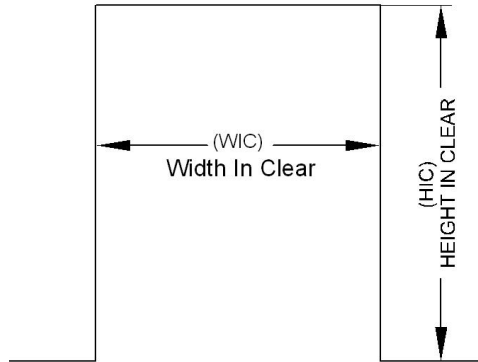
INDEX

1. Instruction Sheet for Ordering Replacement Parts	4
2. Assembly Information	5
3. Side Frame Assembly.....	6
4. Head Assembly	7
5. Power Unit Assembly.....	9
6. Curtain Assembly	11
7. Pneumatic Reversing Edge Assembly	12
8. Control Panel	13
9. Control Panel Components.....	14
10. Miscellaneous Parts.....	15
A. Photoeye Pair	15
B. Sight Sound Safety System	16
c. Pull Cord Switch	18
d. Push Button.....	19
E. Floor Loop.....	20
F. Motion Detector.....	21
G. Unroll Sensor.....	22
H. Touchless Activation.....	23
I. Radio Control	24

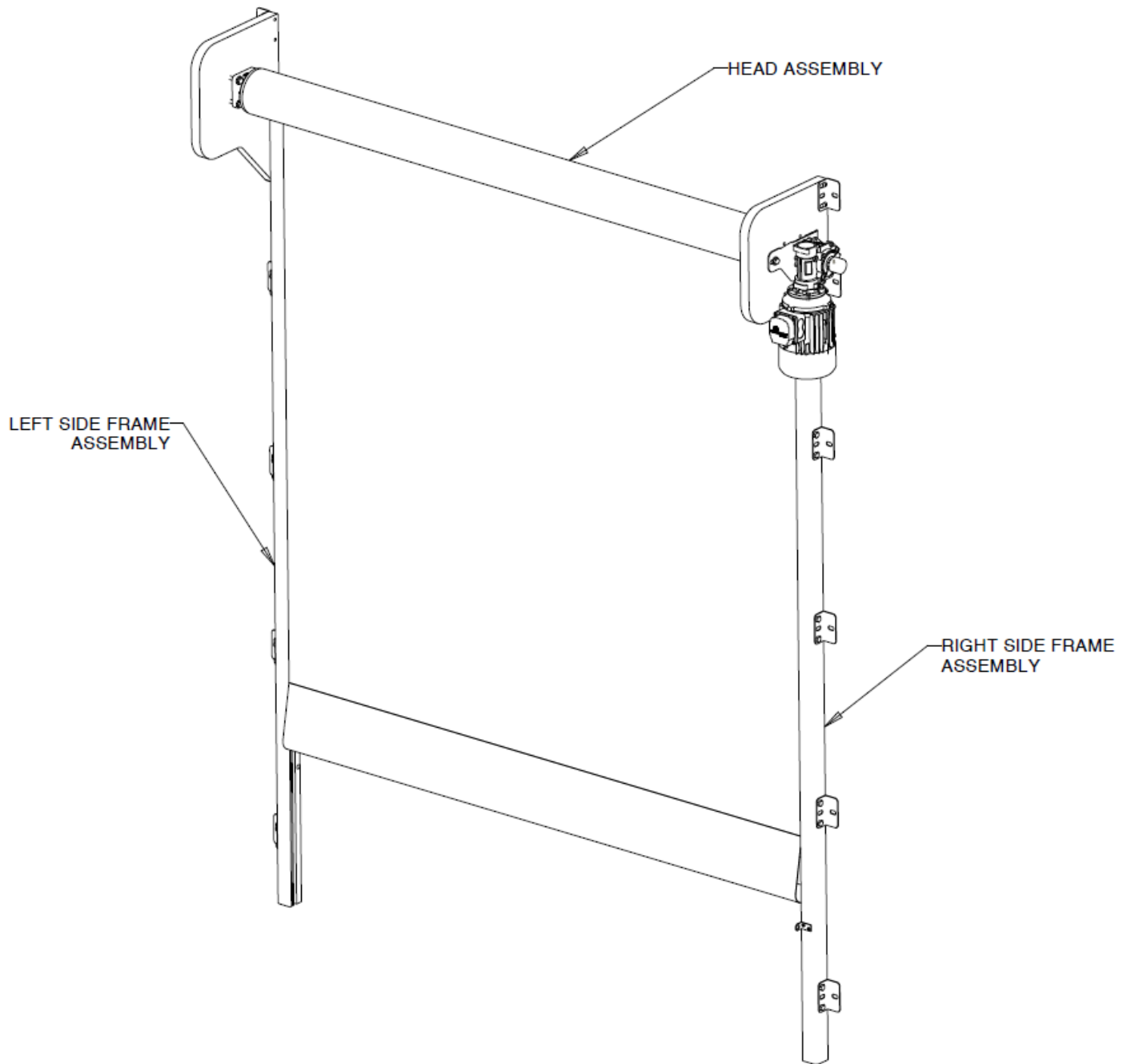
1. INSTRUCTION SHEET FOR ORDERING REPLACEMENT PARTS

NOTES:

1. Sufficient information must be included with all orders so that we can give prompt and accurate service. The specific information needed includes:
 - a. The stock number, drawing number and name of the part
 - b. The door's serial number.
 - c. Whether the door is a right side or left side motor.
2. Parts highlighted in gray are no longer available.



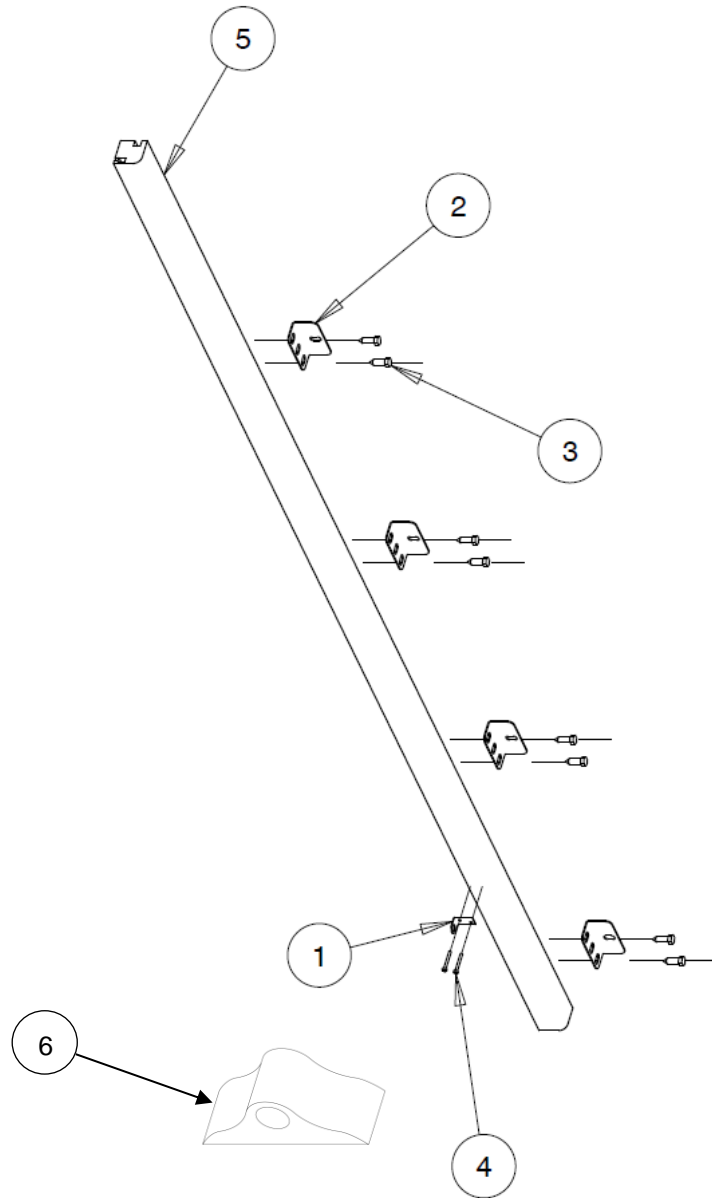
2. ASSEMBLY INFORMATION



NOTES:

1. Right side motor assembly shown, left side opposite.

3. SIDE FRAME ASSEMBLY



NOTES:

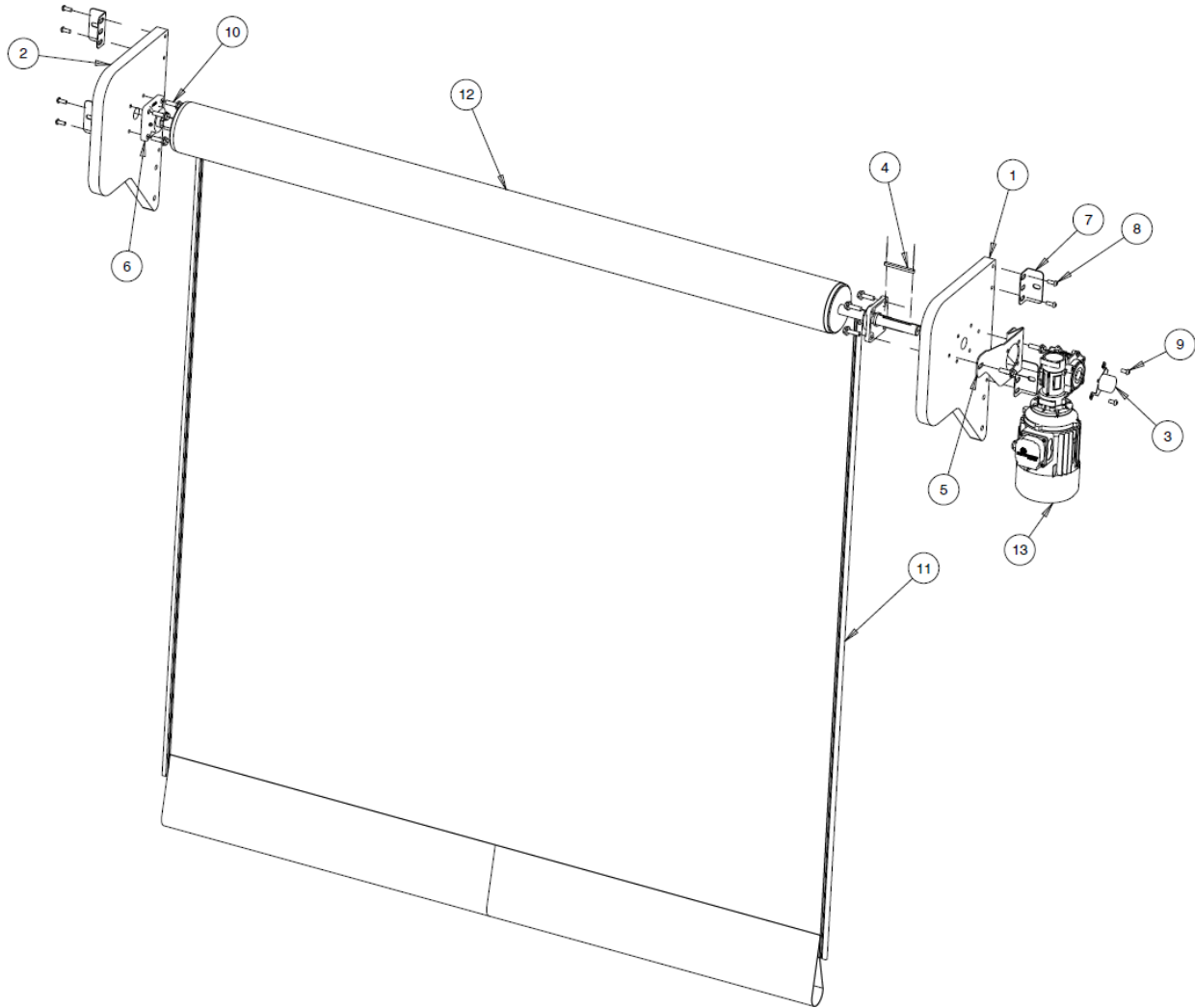
1. Motor side assembly shown, non-motor side does not have items 1 & 4.

Ref #	Group	Finish	Offset	Name of Part	Stock No.	Drawing No.
Assy.				Side Frame Complete Assembly (Motor-Side)	4487-173-XXB	4487-173
				Side Frame Complete Assembly (Non-Motor Side)		
1.				Photoeye Mounting Bracket (Motor Side Only)	4487-174-02B	4487-174
2.*				Side Frame Mounting Bracket	486-304B	4487-172
3.		SST		Lag Screw (3/8" x 1-1/4")	763-447B	
4.				Pan Head Screw (#8 x 1-1/2") (Motor Side Only)	765-365B	
5.*				Side Frame	019-031B	4487-173
6.				PE Photoeye Support, Plastic	019-036B	

*When ordering, specify serial number.

Note: See instruction sheet for ordering parts.

4. HEAD ASSEMBLY



NOTES:

1. Right side motor assembly shown, left side opposite.

Ref #	Group	Finish	Offset	Name of Part	Stock No.	Drawing No.
Assy.				Complete Head Assembly	4487-170-XXB	4487-170
1.				Bearing Plate, Motor Side	019-033B	4487-176
2.				Bearing Plate, Non-Motor Side	019-034B	4487-136
3.				¾Encoder Assembly	119-056B	
4.		SST		Keystock, Reducer	314-114B	
5.		SST		Mounting Bracket, Reducer	4487-017-02B	4487-017
6.		SST		Bearing	481-073B	
7.		SST		Side Frame Mounting Bracket	486-304B	4487-172
8.		SST		Lag Screw (3/8" x 1-1/4")	763-447B	
9.		SST		Button Head Bolt (M8 x 16mm)	761-327B	
10.		SST		Serrated Hex Flange Screw (M10 x 30mm)	761-402B	
11.*				Curtain Assembly	See Section 6	
12.*		Galv		Drum Assembly	4487-069-X1B	4487-69
		SST		M4 Cone Point Set Screw (not shown for galv drum)	771-624B	
		SST		Drum Assembly	4487-069-X2B	4487-69
		ALUM		Drum Assembly	4487-297-X1B	4487-297
		Alloy		M6 Cone Point Set Screw (not shown for alum drum)	771-625B	

13.*

Power Unit Assembly

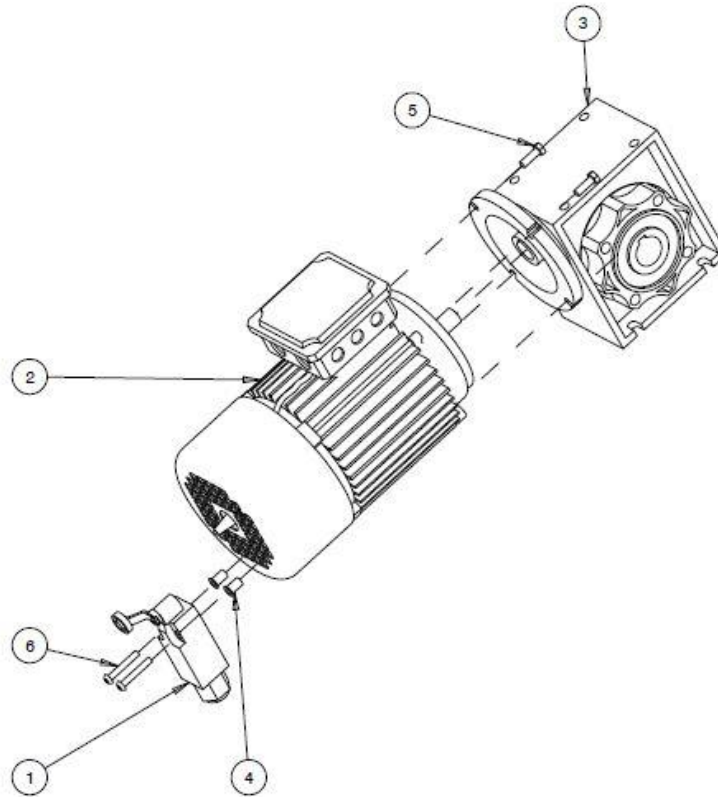
See Section 5

*When ordering, specify serial number.

%For orders more recent than 119419, only the Encoder Assembly is needed. For serial number prior to 119419 (without spider cable) add Replacement Kit 448728901B for use with Encoder Assembly.

Note: See instruction sheet for ordering parts.

5. POWER UNIT ASSEMBLY

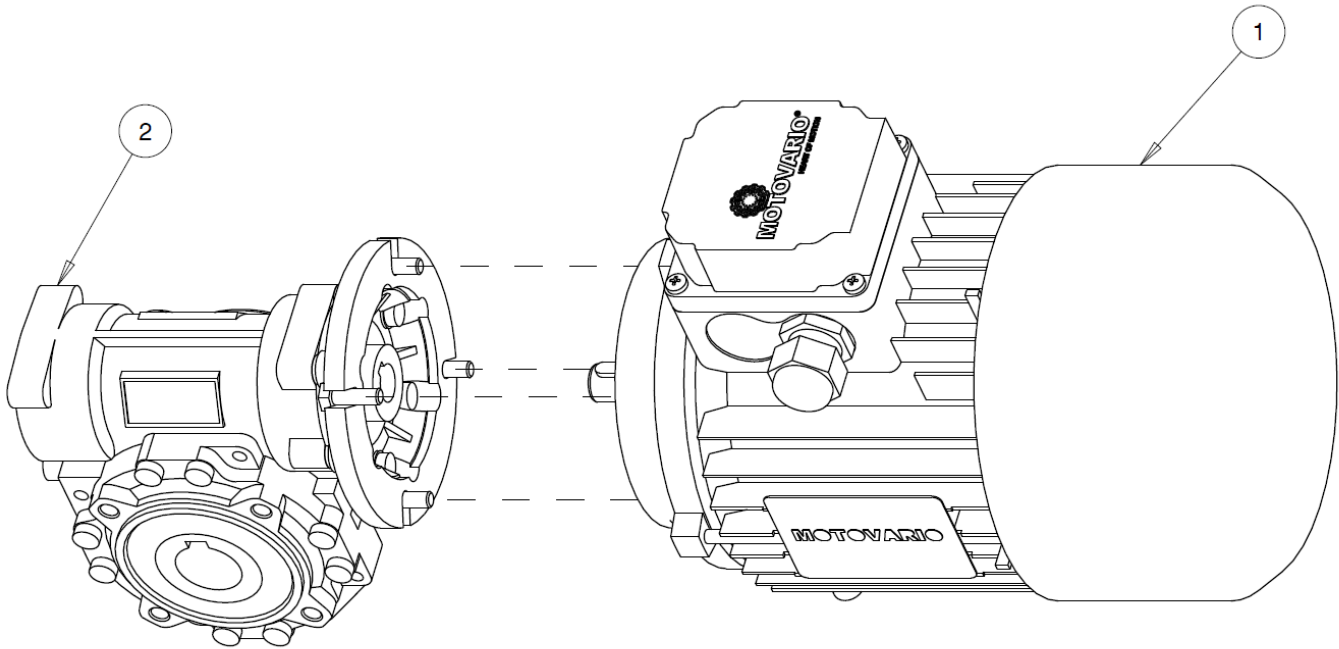


STANDARD POWER UNIT

Ref #	Group	Finish	Offset	Name of Part	Stock No.	Drawing No.
Assy.				Complete Power Unit Assembly	4487-087-XX	4487-87
1				Micro Safety Switch	113-020B	
2				Motor, M1.5N	113-030B	
3*				Reducer, 15:1	201-105B	
				Reducer, 30:1	201-106B	
4*		SST		Rivnut (M5 X 0.8)	759-092B	
5		Galv		Hex Cap Screw (M6 X 1 X 18mm)	761-036B	
6*		SST		Button Hex Head Bolt (M5 X 0.8 X 30mm)	761-328B	

*When ordering, specify serial number.

Note: See instruction sheet for ordering parts.

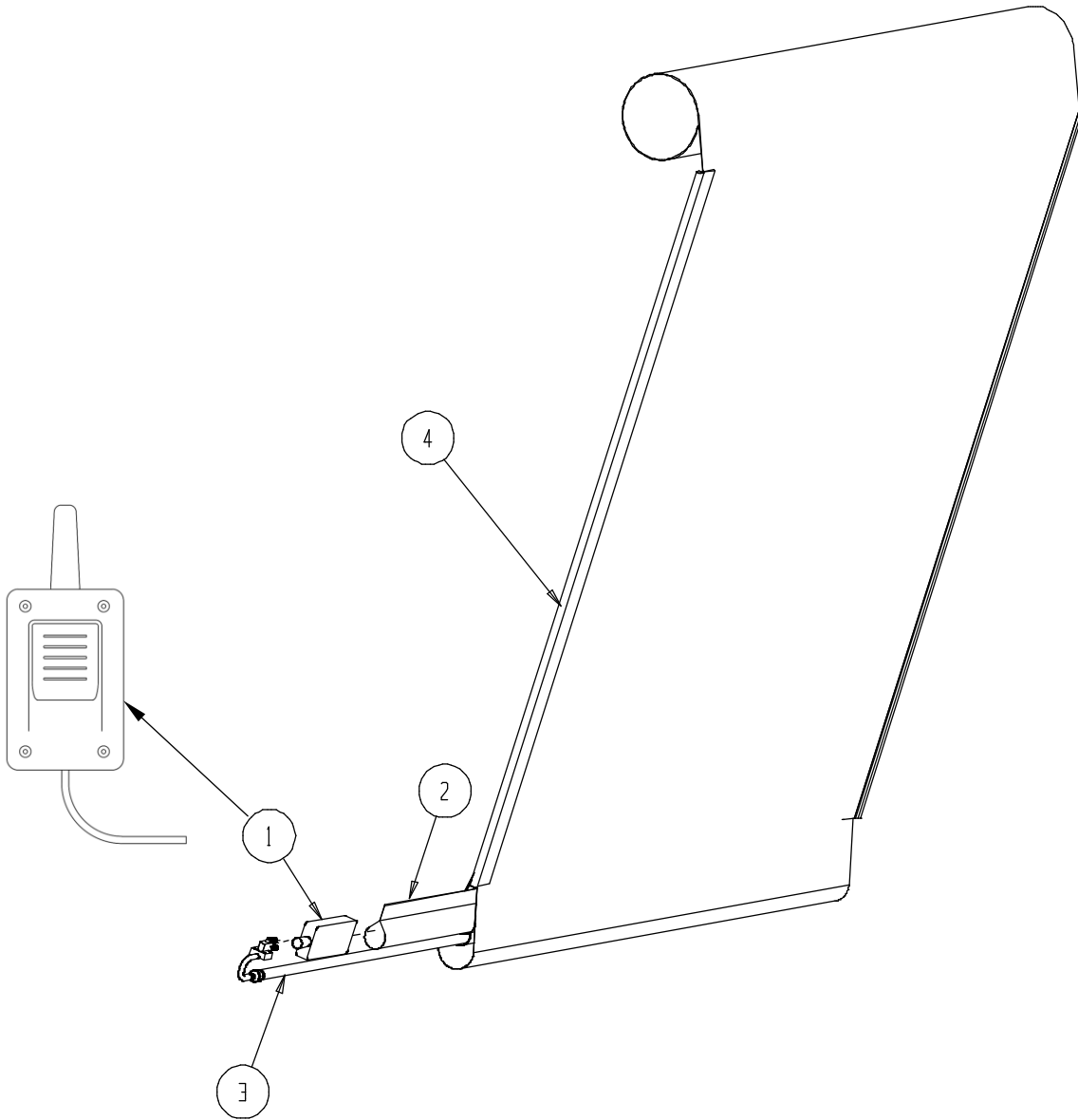


TROPICAL POWER UNIT

Ref #	Group	Finish	Offset	Name of Part	Stock No.	Drawing No.
Assy.				Complete Power Unit Assembly	4487-179-XX	4487-179
1.				Motor, .75kW	133-032B	
2.				Reducer, 40:1	201-108B	

Note: See instruction sheet for ordering parts.

6. CURTAIN ASSEMBLY



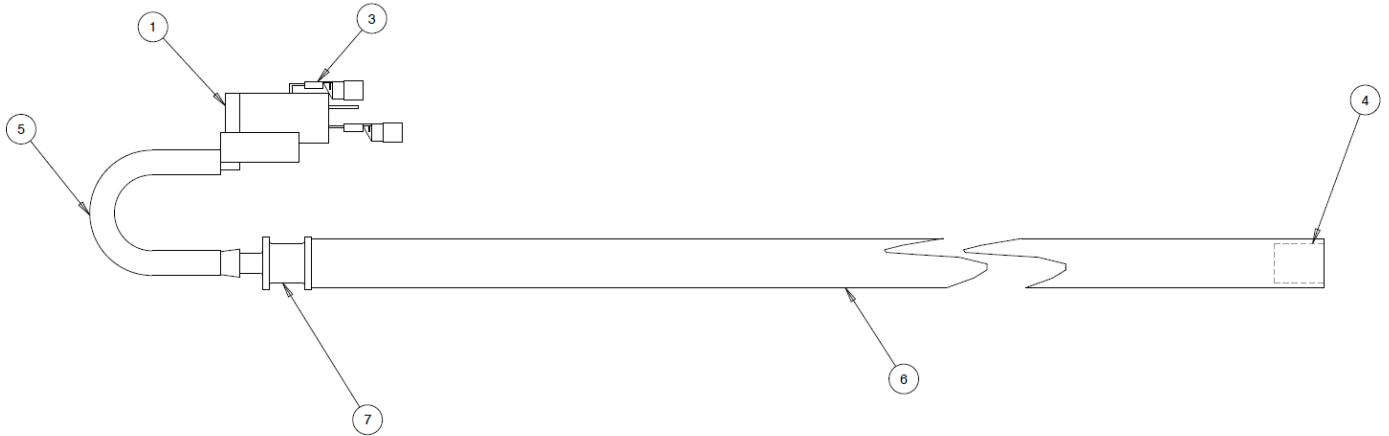
Partial View of Curtain Shown to Detail Bottom

Ref #	Group	Finish	Offset	Name of Part	Stock No.	Drawing No.
1				Wireless Transmitter and Receiver (Transmitter in Curtain, Receiver Wired to Control Panel)	119-042B	
2*				Ballast	4487-085-XXB	4487-85
3*				Pneumatic Reversing Edge Assembly	See Section 13	4487-125
4*				Curtain Assembly	4487-028-XXB	4487-28

*When ordering, specify serial number.

Note: See instruction sheet for ordering parts.

7. PNEUMATIC REVERSING EDGE ASSEMBLY

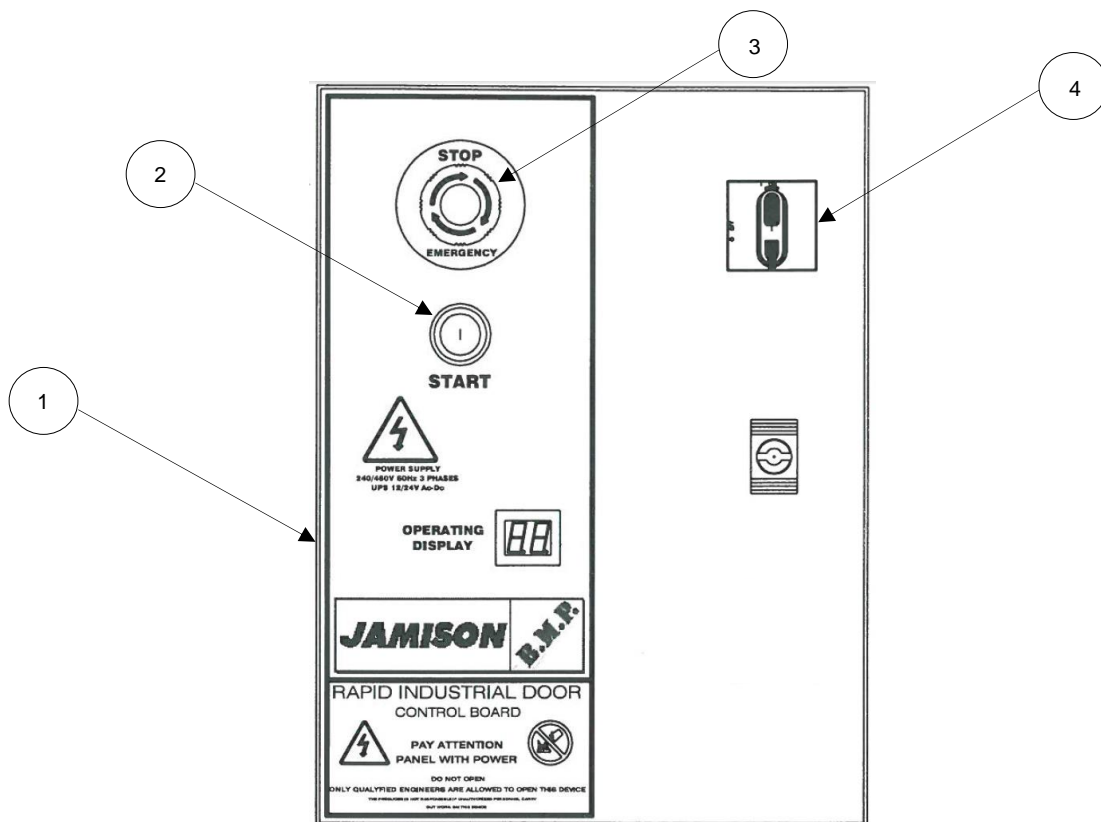


Ref #	Group	Finish	Offset	Name of Part	Stock No.	Drawing No.
Assy.				Reversing Edge Complete Assembly	4487-125-XX	4487-125
				Reversing Edge Complete Assembly (10' WIC)	4487-125-11B	4487-125
				Reversing Edge Complete Assembly (12' WIC)	4487-125-21B	4487-125
				Reversing Edge Complete Assembly (Custom)	4487-125-XXB	4487-125
1.				Pressure Sensitive Switch	113-220B	
2.				2 Conductor Wire (Black, Red) Not Shown	123-306B	
3.				Slip On Terminal (.187" x 22-18)	191-217B	
4.				End Plug	4390-167-01B	4390-167
5.*				Rubber Surgical Tubing (5/8" x 1/2" x 1/16")	4487-125-XXB	4487-125
6.				Barbed Tube Fitting (1/2" to 1/4")	559-121B	
7.				Clear Vinyl Hose (5/16" x 3/16" x 1/16")	4487-086-01B	4487-86

*When ordering, specify serial number.

Note: See instruction sheet for ordering parts.

8. CONTROL PANEL



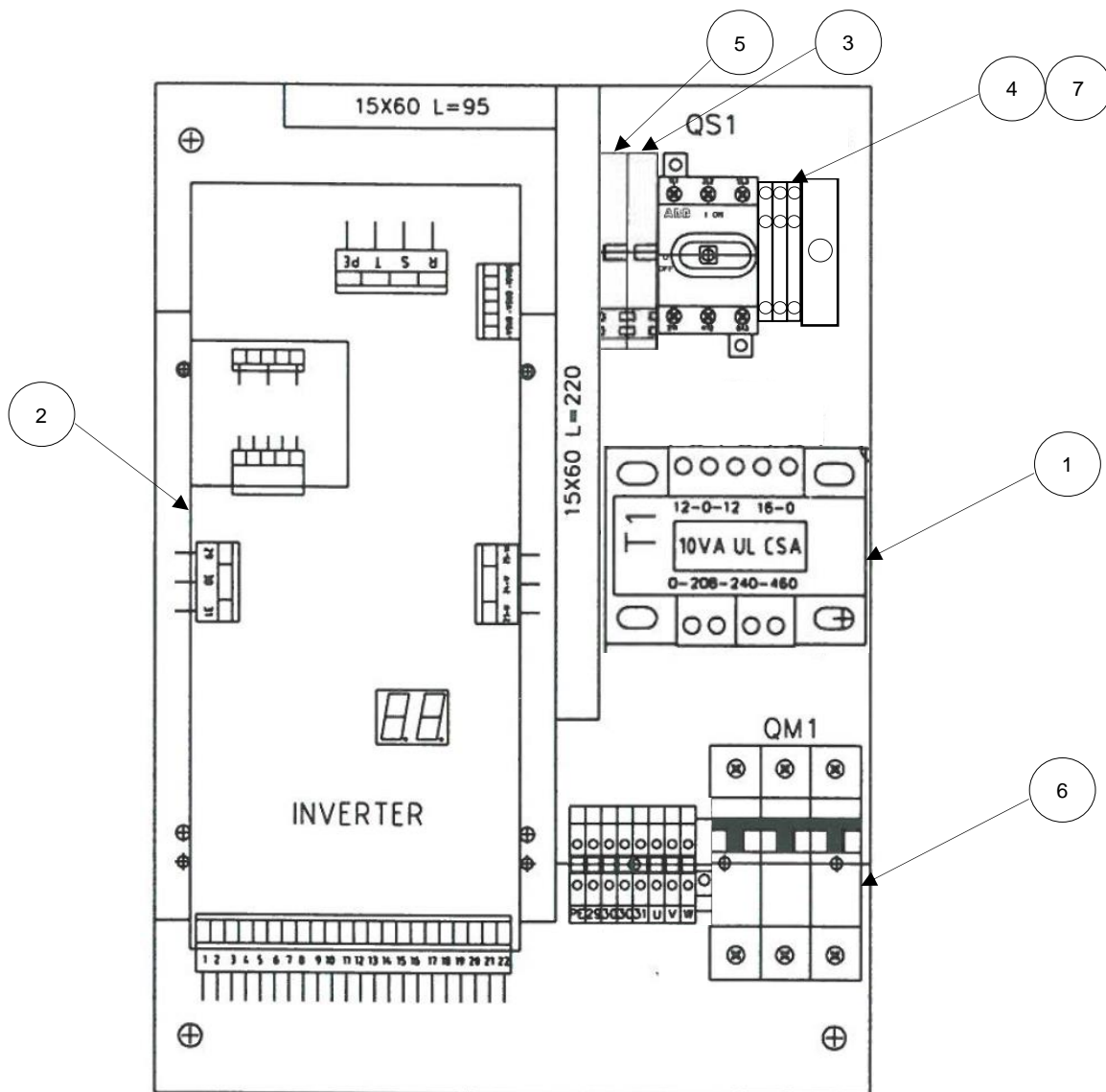
Ref #	Group	Finish	Offset	Name of Part	Stock No.	Drawing
1.*		PTD		Control Panel Assembly (NEMA1)	119-207B	
		SST		Control Panel Assembly (NEMA4X)	119-208B	
		PLASTIC		Control Panel Assembly (NEMA4X)	119-206B	
2.				Start Button (Green)	119-021B	
3.				E-Stop Switch	119-045B	
4.				On/Off Door Lock Switch	119-050B	
5.				Motor Wire (Not Shown)	121-035B	
7.*%				Spider Connector < 8' X 10' (Not Shown)	191-534B	
				Spider Connector < 10' X 16' (Not Shown)	191-535B	
				Spider Connector < 12' X 20' (Not Shown)	191-536B	
8.*%				Control Panel Receptacle for Spider (Not Shown)	191-537B	
9.*%				32ft Extended Control Panel Connector (Not Shown)	191-533B	
10.*%				Small Spider Wire Conversion Kit (After 6/27/16)	4487-270-01B	
				Medium Spider Wire Conversion Kit (After 6/27/16)	4487-270-11B	
				Large Spider Wire Conversion Kit (After 6/27/16)	4487-270-21B	

*When ordering, specify serial number.

%Only for orders more recent than 119419

Notes: See instruction sheet for ordering parts. Internal components are common for all NEMA applications.

9. CONTROL PANEL COMPONENTS



NOTES:

1. ENCLOSURE COVER NOT SHOWN FOR CLARITY

Ref #	Group	Finish	Offset	Name of Part	Stock No.	Drawing
1.				Transformer, 10VA For 208, 230, 460.	115-133B	
2.				Control Card, 3 Phase	115-003B	
				Control Card, Single Phase	115-001B	
3.				630V Fuse Holder	170-069B	
4.				Terminal Block (460/480V only)	170-028B	
5.				160 mA Fuse for 460V (Not Shown)	116-133B	
				250 mA Fuse for 208/230V (Not Shown)	116-132B	
6.				15 Amp Fuse (Not Shown)	116-111B	
7.				510V MOV/Varistor (460/480V only) (Not Shown)	119-294B	

NOTE: See instruction sheet for ordering parts.

10. MISCELLANEOUS PARTS

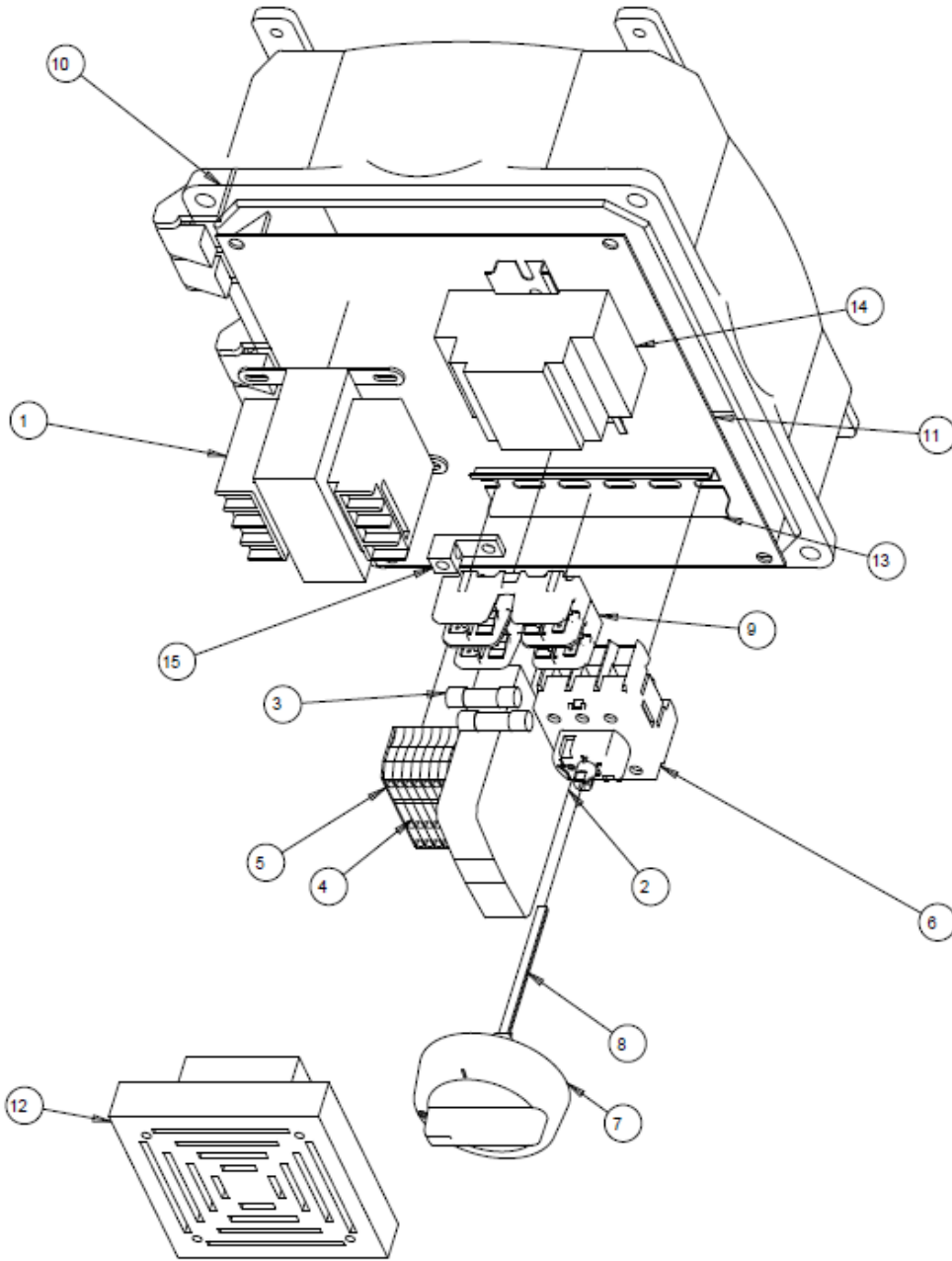
A. PHOTOEYE PAIR



Ref #	Group	Finish	Offset	Name of Part	Stock No.	Drawing
Assy.				Photoeye Conversion Kit (Contains Items 1 & 2) (For doors shipped before 05/21/2014)	4487-161-01B	
1.				Photoeye Pair	119-122B	
2.				Photoeye Receiver	119-123B	
3.				Photoeye Transmitter	119-124B	
4.				3 Conductor Cable (Not Shown)	119-292B	

Note: See instruction sheet for ordering parts.

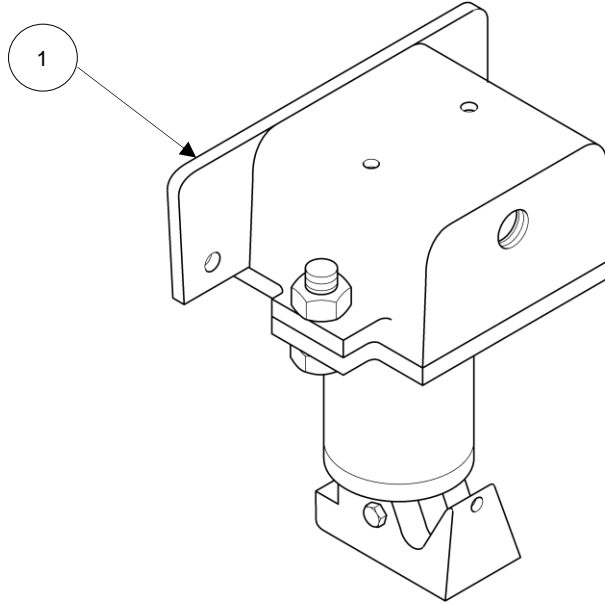
B. Sight Sound Safety System



Ref #	Group	Finish	Offset	Name of Part Stock	Stock No.	No. Drawing
1				Transformer	115108	
2				Power Supply	115138	
3				Fuse, 3A	116108	
				Fuse, 2A	116121	
				Fuse, 1.5A	116113	
				Fuse, 1A	116124	
4				Terminal Block (Blue)	170029	
				Terminal Block (Orange)	170030	
				Terminal Block (Green)	170045	
				Jumper	170026	
5				Terminal Barrier (Small)	170048	
				Terminal Barrier (Large)	170046	
6				Disconnect Switch	170077	
7				Selector Handle	170078	
8				Selector Handle Shaft	170079	
9				Fuse Holder	191166	
10				Polycarbonate Enclosure	191547	
11				Panel	191548	
12				Washdown Buzzer	199102	
13				Din Rail	439040602	H4390406
14				Logic Smart Relay	449300301	
15				Grounding Lug	191355	
16				Wire #18-3 (Not shown)	121015	
17				Light Strip(Not shown)	199104	
18				LED Countdown (Not shown)	199103	
				Safety System 120V w/ PS	449300101	H4493001
				Safety System 208V w/ PS	449300102	H4493001
				Safety System 240V w/ PS	449300103	H4493001
				Safety System 480V w/ PS	449300104	H4493001
				Safety System 120V w/o PS	449300111	H4493001
				Safety System 208V w/o PS	449300112	H4493001
				Safety System 240V w/o PS	449300113	H4493001
				Safety System 480V w/o PS	449300114	H4493001

Note: w/ PS = with POWER SUPPLY
w/o PS = without POWER SUPPLY

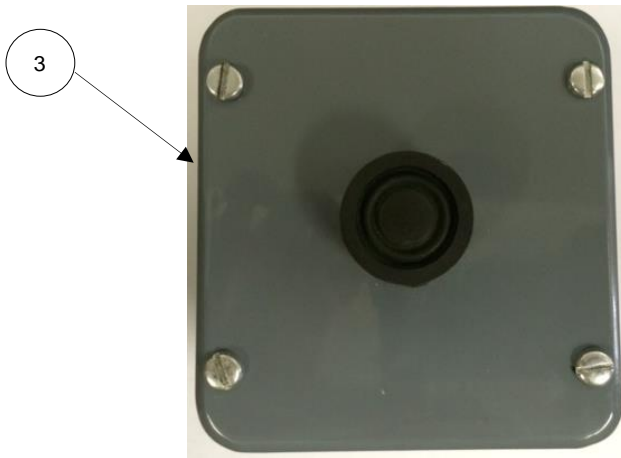
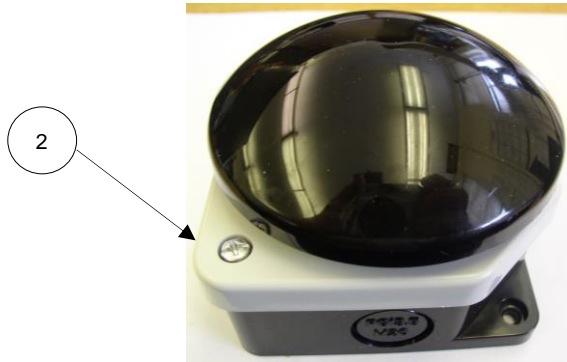
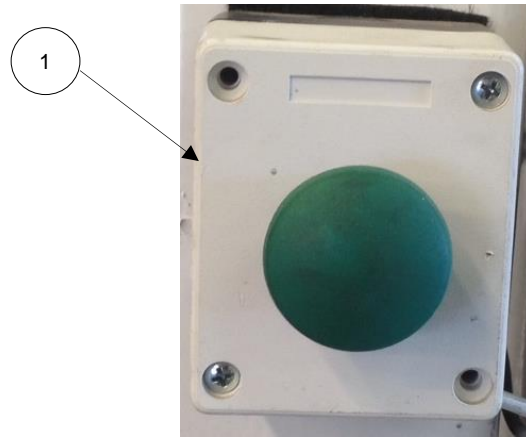
C. PULL CORD SWITCH



Ref #	Group	Finish	Offset	Name of Part	Stock No.	Drawing
1.				Complete WPS Switch Assembly (w/o Heat)	113-218B	
				Complete WPS Switch Assembly (w/Heat)	113-219B	
				Complete WPS Switch Assembly (w/ 220V Heat)	4285-099-01B	4285-99
2.				Pull Cord Rope Vinyl 60' (Not Shown)	4285-049-01B	4285-49

Note: See instruction sheet for ordering parts.

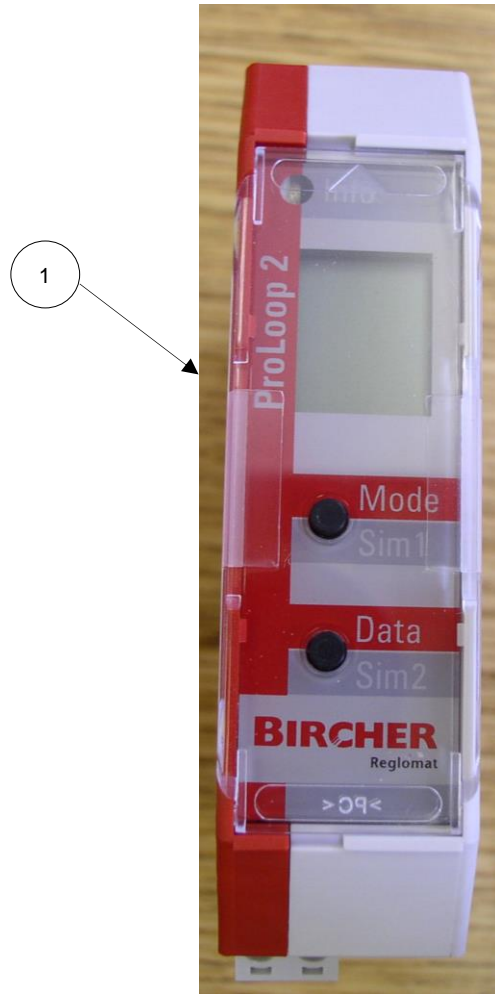
D. PUSH BUTTON



Ref #	Group	Finish	Offset	Name of Part	Stock No.	Drawing
1.				Lovato Green Push Button Complete Assembly	4487-123-01B	
2.				Giovenzana International Push Button Assembly	119-020B	
3.				NEMA 4 Push Button Assembly (w/out heat)	119-019B	
				NEMA 4 Push Button Assembly (w/ 120V Heat)	4390-332-01B	
				NEMA 4 Push Button Assembly (w/ 220V Heat)	4390-332-02B	

Note: See instruction sheet for ordering parts.

E. FLOOR LOOP



NOTES:

1. Floor Loop Module shown outside of control panel for clarity.

Ref #	Group	Finish	Offset	Name of Part	Stock No.	Drawing
1.				Floor Loop Module	119-034B	
2.				Backer Rod BR-125 1/4" Dia (Not Shown)	119-018B	
3.				Wire, DSI-120 1/8" Dia (500ft/Roll) (Not Shown)	119-017B	

Note: See instruction sheet for ordering parts.

F. MOTION DETECTOR



Ref #	Group	Finish	Offset	Name of Part	Stock No.	Drawing
1.				APRO 20	119-043B	
2.				BEA Falcon	119-033B	
3.				BEA #10 Eagle1 HM	119-005B	
4.				Remote for Falcon/Eagle (Not Shown)	119-006B	

Note: See instruction sheet for ordering parts.

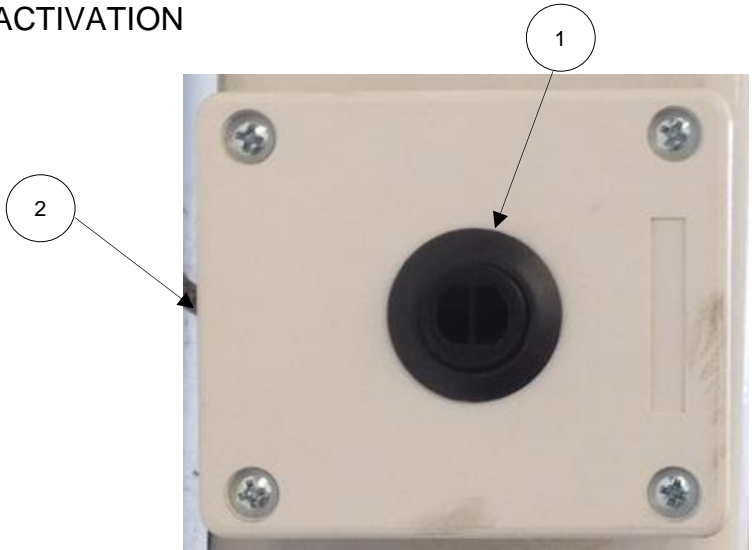
G. UNROLL SENSOR



Ref #	Group	Finish	Offset	Name of Part	Stock No.	Drawing
3.				SICK Prox Sensor for Spider Adapter	119-052B	

Note: See instruction sheet for ordering parts.

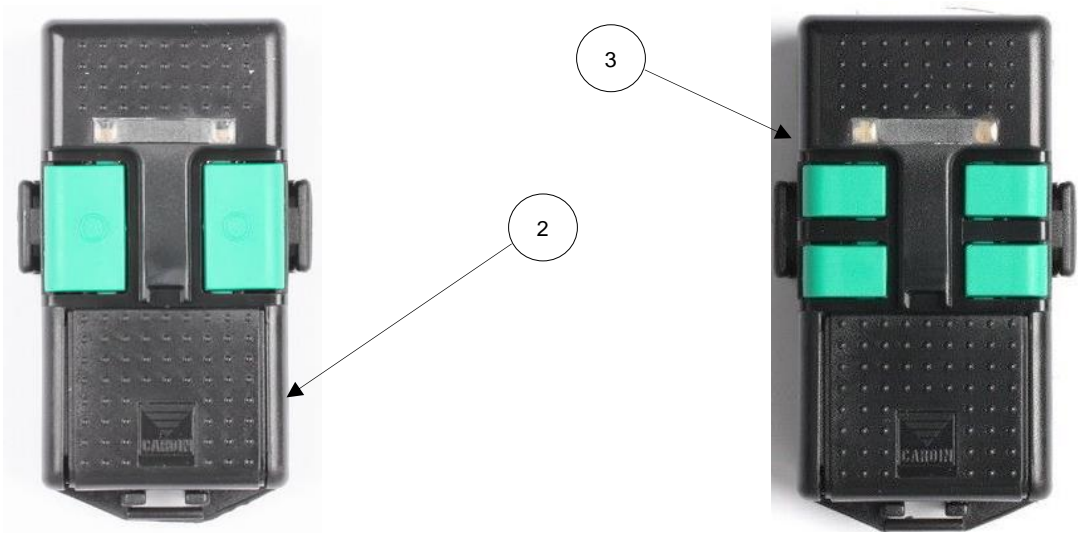
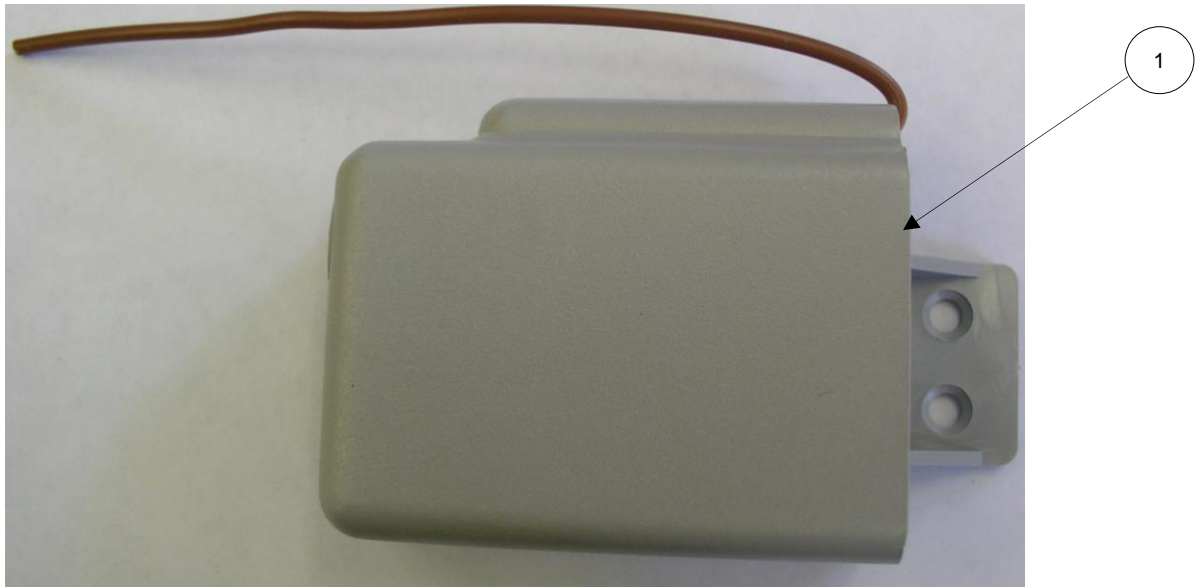
H. TOUCHLESS ACTIVATION



Ref #	Group	Finish	Offset	Name of Part	Stock No.	Drawing
Assy.				Touchless Activation Sensor and Housing	4487-146-01B	
1.				Proximity Sensor	119-035B	
2.				Housing, Lovato 8L2PP1A8	191-082B	
3.				4 Conductor Cable (Not Shown)	119-293B	

Note: See instruction sheet for ordering parts.

I. RADIO CONTROL



Ref #	Group	Finish	Offset	Name of Part	Stock No.	Drawing
1.				Radio Control Reciever	119-037B	
2.				2-Button Radio Transmitter	119-038B	
3.				4-Button Radio Transmitter	119-039B	
4.				12V Battery (Not Shown)	199-091B	

Note: See instruction sheet for ordering parts.