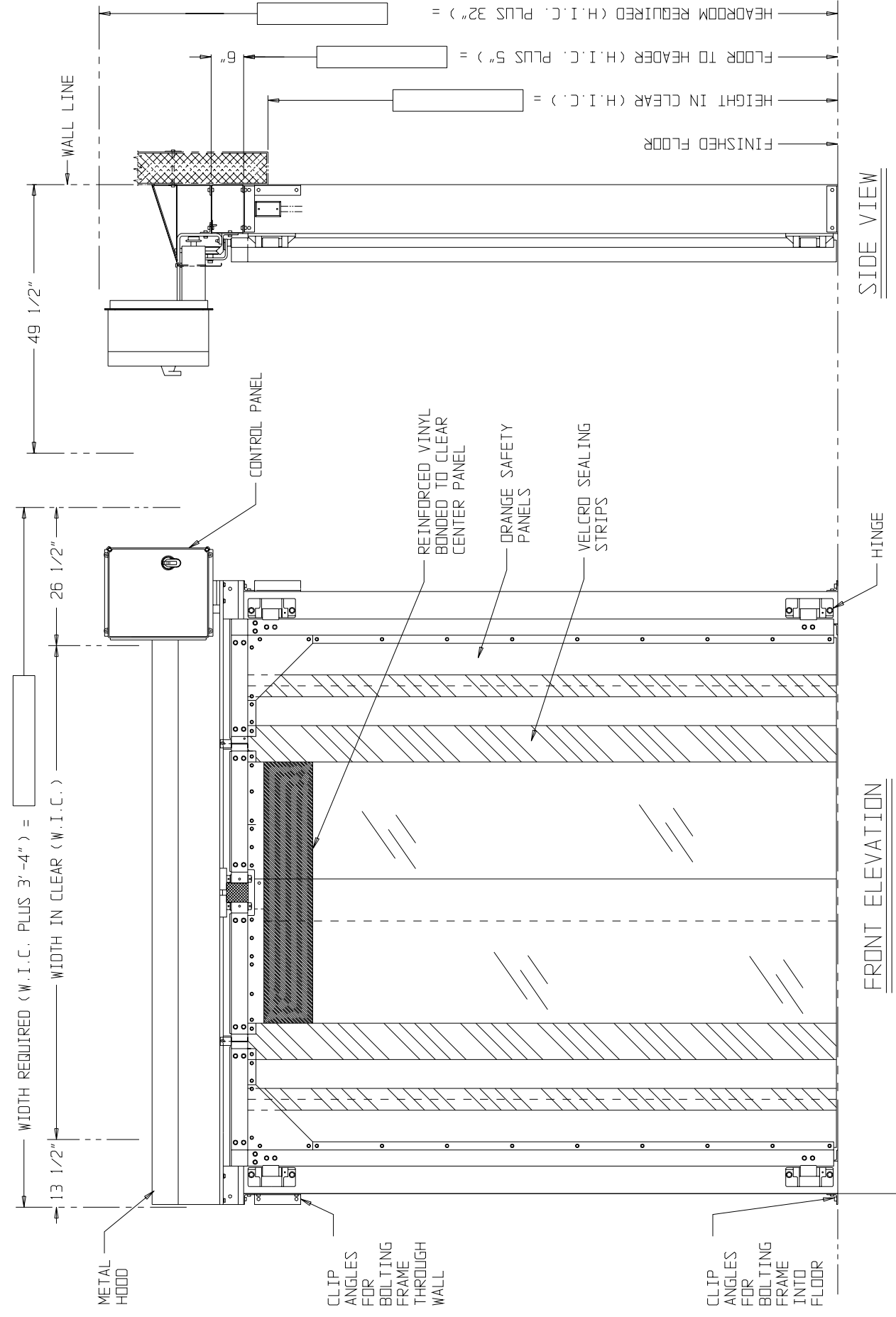


NOTES:

- DOOR IS PVC VINYL PANELS SUPPORTED BY ANODIZED ALUMINUM FRAMING AND RETAINERS. PANELS ARE CLEAR VINYL .3" THICK.
- CASING FRAME, TRACK ANGLE AND HEADER ARE ANODIZED ALUMINUM EXTRUSIONS.
- DOOR HARDWARE HAS A CORROSION PROTECTIVE FINISH.
- SHEET METAL HOOD SUPPLIED FOR HEADER WITH GRAY PAINTED FINISH.
- BUCK SUGGESTIONS FURNISHED IN INSTALLATION INSTRUCTIONS BOOKLET.
- DOOR EQUIPPED WITH VARIABLE SPEED DRIVE UNIT
- DOOR SUPPLIED WITH TWO REMOTE PULL CORD SWITCHES AND PLASTIC PULL CORD. 120 VOLTS REQUIRED FOR HEATED SWITCHES. WIRING BETWEEN SWITCHES AND CONTROL PANEL NOT BY JAMISON.
- INSTALLER TO CONNECT ELECTRICAL SERVICE TO CONTROL PANEL. CURRENT PROTECTION PROVIDED BY THE INSTALLER.
- *9. POWER UNIT AVAILABLE FOR THE FOLLOWING POWER CHARACTERISTICS ONLY: 120, 208, 230, OR 460 VOLT SINGLE PHASE 60 HERTZ
- AVAILABLE SIZES ARE 6'-0" THROUGH 12'-0" WIDTH IN CLEAR X 8'-0" THROUGH 14'-0" HEIGHT IN CLEAR.
- CURTAIN MAY SWEAT DEPENDING ON RELATIVE HUMIDITY ON WARM SIDE AND TEMPERATURE DIFFERENTIAL FROM FRONT TO BACK. IF ANY QUESTIONS, CONTACT JAMISON.
- CYCLE COUNTER INCLUDED IN CONTROL PANEL.

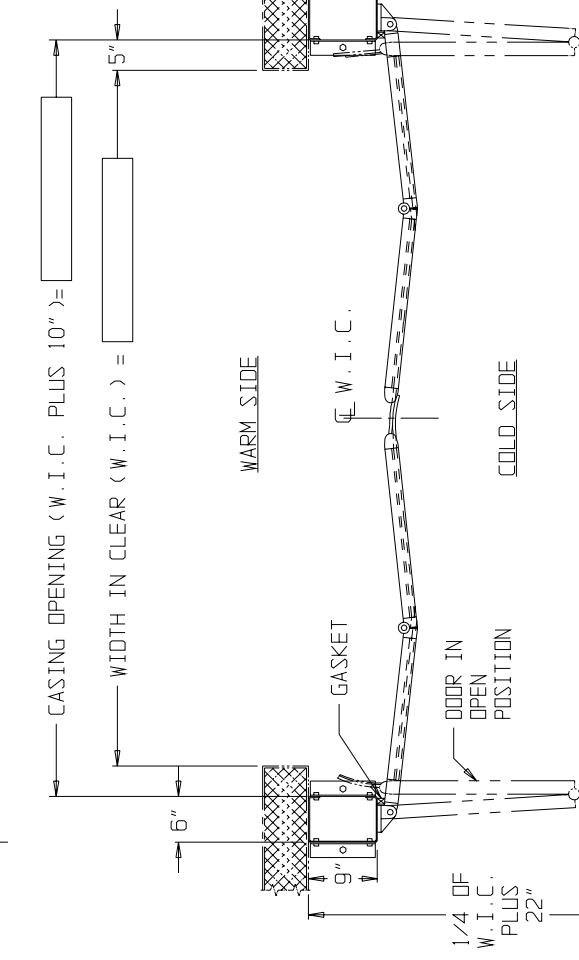


FRONT ELEVATION

SIDE VIEW

SCHEDULE

DOOR NUMBER	DOOR QUANTITY	SIZE IN CLEAR	W.I.C. H.I.C.	VOLTS	HERTZ	PHASE	TEMPERATURE CONDITIONS	FRONT	BACK	WALL THICKNESS



HORIZONTAL SECTION

OPTIONAL FEATURES

- | | | |
|--|--------------------------|--------------------------|
| A. RADIO CONTROL | YES | NO |
| B. FLOOR LOOP CONTROL BOX WITH TIME DELAY CLOSING | <input type="checkbox"/> | <input type="checkbox"/> |
| C. MOTION DETECTOR WITH TIME DELAY CLOSING | <input type="checkbox"/> | <input type="checkbox"/> |
| D. ELECTRIC EYE | <input type="checkbox"/> | <input type="checkbox"/> |
| E. HOLD-OPEN PUSH BUTTON (USE WITH ITEMS B, C, & D ONLY) | <input type="checkbox"/> | <input type="checkbox"/> |

CAUTION

- NOTE-1: DO NOT SCALE DIMENSIONS.
 NOTE-2: DO NOT SCALE BUCKS. BUCK SIZE AND DESIGN BY OTHERS. GOVERNED BY DOOR SIZE, WALL CONSTRUCTION AND CEILING HEIGHT.
 NOTE-3: GREATER CLEARANCE MAY BE REQUIRED AT SIDES AND/OR HEAD BY CERTAIN JOB CONDITIONS SUCH AS HIGHER STILL BEVEL OR OBSTRUCTIONS NECESSITATING COCKING OR TILTING FRAME INTO OPENING, ETC.

CUSTOMER:

SCALE(S)	NONE
DATE	DRAWN
CHECKED	APPROVED
JAMISON DOOR COMPANY P. O. BOX 70 HAGERSTOWN, MARYLAND 21741	

JOB NAME	INVTION
TITLE	SHALLOW VESTIBULE WITH VELCRO SEALS

DATE	BY	REVISIONS
C 2/24/08	KJT	UPDATED NOTES CS-113
B 15/21/07	DTL	CON. PANEL NOTES FOR WAS 48 CS-109
A 11/25/07	MRB	ADDED DRAWING # TO TITLE BLOCK FOR #14

NO. H4420418C