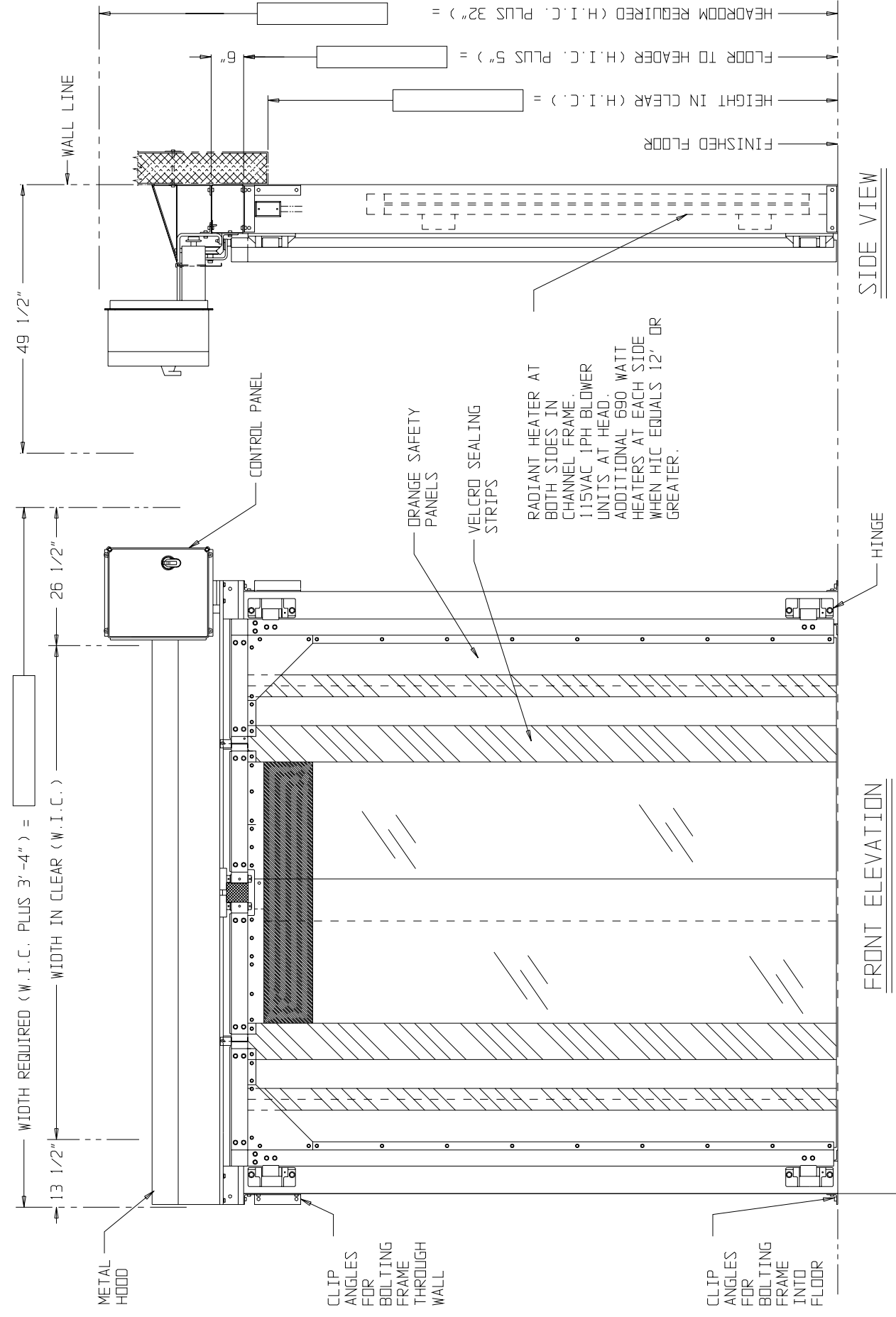


NOTES:

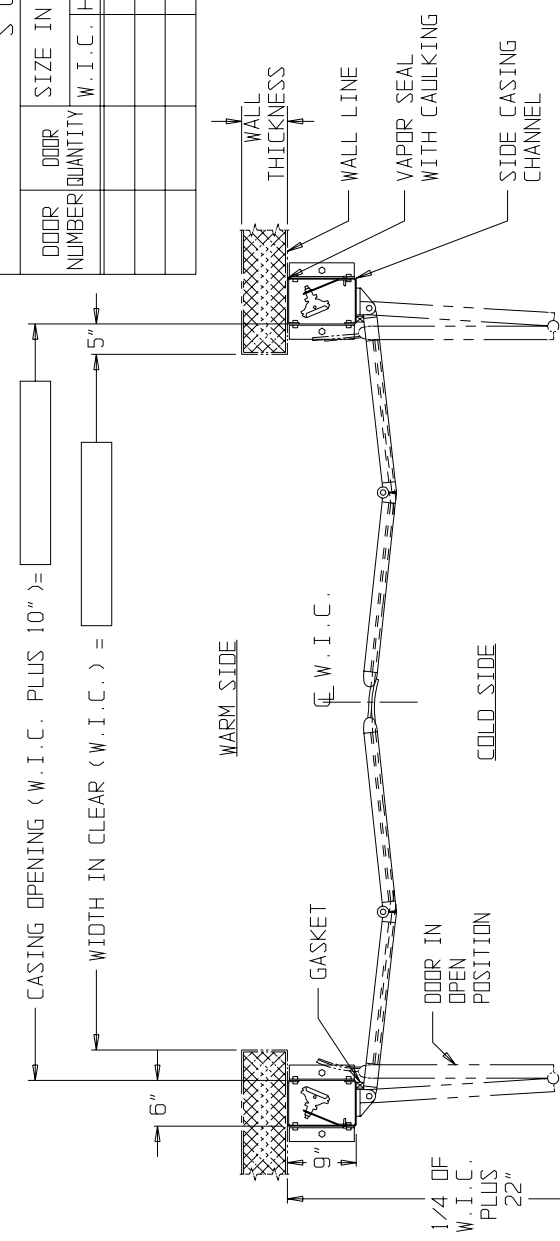
1. DOOR IS PVC VINYL PANELS SUPPORTED BY ANODIZED ALUMINUM FRAMING AND RETAINERS. PANELS ARE CLEAR VINYL .3" THICK.
 2. CASING FRAME, TRACK ANGLE AND HEADER ARE ANODIZED ALUMINUM EXTRUSIONS.
 3. DOOR HARDWARE HAS A CORROSION PROTECTIVE FINISH.
 4. SHEET METAL HOOD SUPPLIED FOR HEADER WITH GRAY PAINTED FINISH.
 5. BUCK SUGGESTIONS FURNISHED IN INSTALLATION INSTRUCTIONS BOOKLET.
 6. DOOR EQUIPPED WITH VARIABLE SPEED DRIVE UNIT
 7. DOOR SUPPLIED WITH TWO REMOTE PULL CORD SWITCHES AND PLASTIC PULL CORD. 120 VOLTS REQUIRED FOR HEATED SWITCHES. WIRING BETWEEN SWITCHES AND CONTROL PANEL NOT BY JAMISON.
 8. INSTALLER TO CONNECT ELECTRICAL SERVICE TO CONTROL PANEL. CURRENT PROTECTION PROVIDED BY THE INSTALLER.
 - *9. POWER UNIT AVAILABLE FOR THE FOLLOWING POWER CHARACTERISTICS ONLY: 240 OR 480 VOLTS, 60 HERTZ, 3-PHASE.
 10. AVAILABLE SIZES ARE 6'-0" THROUGH 12'-0" WIDTH IN CLEAR X 8'-0" THROUGH 14'-0" HEIGHT IN CLEAR.
 11. CURTAIN MAY SWEAT DEPENDING ON RELATIVE HUMIDITY ON WARM SIDE AND TEMPERATURE DIFFERENTIAL FROM FRONT TO BACK. IF ANY QUESTIONS, CONTACT JAMISON.
 12. CYCLE COUNTER INCLUDED IN CONTROL PANEL.
 13. TWO RADIANT HEATERS SUPPLIED WITH EACH DOOR. RADIANT HEATER CYCLE TIMER IS STANDARD.
- 230 VOLT, 3600 WATTS EACH HEATER, 7200 WATTS TOTAL, 32 AMPS TOTAL
- 460 VOLT, 3600 WATTS EACH HEATER, 7200 WATTS TOTAL, 16 AMPS TOTAL
- ADDITIONAL HEATERS WHEN HIC EQUALS 12' OR GREATER:
- 230 VOLT, 690 WATTS EACH HEATER, 1380 WATTS TOTAL, 6 AMPS TOTAL
- 460 VOLT, 690 WATTS EACH HEATER, 1380 WATTS TOTAL, 3 AMPS TOTAL
14. 120 VAC, 1 PHASE REQUIRED FOR BLOWER(S), PULL CORD, HEATERS. 10 AMP CIRCUIT.



FRONT ELEVATION

SCHEDULE

DOOR NUMBER	DOOR QUANTITY	SIZE IN CLEAR W.I.C. H.I.C.	VOLTS HERTZ PHASE	TEMPERATURE HUMIDITY CONDITIONS		RELATIVE HUMIDITY ON WARM SIDE %	WALL THICKNESS
				FRONT	BACK		



HORIZONTAL SECTION

- OPTIONAL FEATURES**
- | | | |
|---|--------------------------|--------------------------|
| A. RADIO CONTROL | YES | NO |
| B. FLOOR LOOP CONTROL BOX WITH TIME DELAY CLOSING | <input type="checkbox"/> | <input type="checkbox"/> |
| C. MOTION DETECTOR WITH TIME DELAY CLOSING | <input type="checkbox"/> | <input type="checkbox"/> |
| D. ELECTRIC EYE | <input type="checkbox"/> | <input type="checkbox"/> |

CAUTION

- NOTE-1. DO NOT SCALE DIMENSIONS.
 NOTE-2. DO NOT SCALE BUCKS. BUCK SIZE AND DESIGN BY OTHERS. GOVERNED BY DOOR SIZE, WALL CONSTRUCTION AND CEILING HEIGHT.
 NOTE-3. GREATER CLEARANCE MAY BE REQUIRED AT SIDES AND/OR HEAD BY CERTAIN JOB CONDITIONS SUCH AS HIGHER STILL BEVEL OR OBSTRUCTIONS NECESSITATING COCKING OR TILTING FRAME INTO OPENING, ETC.

CUSTOMER:

SCALE(S)	NONE
DATE	DRAWN
CHECKED	APPROVED
JAMISON DOOR COMPANY P. O. BOX 70 HAGERSTOWN, MARYLAND 21741	

JOB NAME	INVISION
TITLE	BI-FOLD POWER FREEZER SHALLOW VESTIBULE WITH VELCRO SEALS
NO.	H44204190

NO. H44204190