

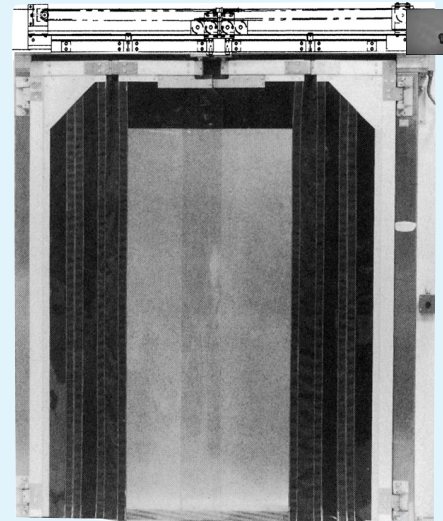
## MARK IV

## InVision®

### BI-FOLDING POWER OPERATED DEEP VESTIBULE FREEZER DOOR

digitally controlled fast operating door for high volume traffic

- *PowerTron® Digital Controller*
- *Five Year Limited Warranty (1 year on panels)*



#### FREEZER DOOR SPECIFICATIONS:

Supply where indicated on plans Jamison Mark IV InVision® BiFolding, Power Operated, Deep Vestibule Freezer Door with PowerTron® Digital Controller.

Door panels to be made of PVC vinyl, supported by anodized aluminum framing and retainers. Center panels to be transparent flexible 0.3 (7mm) thickness and side panels to be orange reinforced vinyl. Panels to be supplied with Velcro® seams.

Track angle, door panel frame and retainers to be T6063-T6 aircraft grade anodized aluminum alloy. Support frame and header to be #14 gauge galvanized steel. Vestibule structure to be #16 gauge galvanized steel insulated panels.

Solid Neoprene gaskets to be provided at two sides and vinyl gasket across head where door contacts support structure.

Hardware to have protective coating against corrosion. Heavy-duty side support hinges to have thrust ball bearing and center pivoting hinges to have oil impregnated bronze bearing. Large diameter heavy-duty dual trolley wheels and a #40 drive chain to be furnished.

Heater system to consist of radiant heaters located inside door frame at both sides and air curtain mounted across head inside vestibule. (Air Curtain requires 240 or 480 volt 3 phase circuit.)

Door to be equipped with PowerTron Digital Controller, a maintenance free servo drive unit. Door to open at speed up to 100" per second. Control unit includes pre-programmed motor operation, automatic open and close limit setting system and integrated cycle counter. Automatic opening to be provided with two remote control, spring cushioned, low voltage pull cord switches.

Door power to be 240 or 480 Volt AC, 60 Hertz, three phase. (ARCHITECT TO SPECIFY VOLTAGE.)

Main control panel to be \*\*UL® Listed NEMA 4X enclosure. Lockable disconnect switch to be provided. Control panel to be shipped separately for installation at remote location. (ARCHITECT TO DESIGNATE RESPONSIBILITY FOR FIELD WIRING TO POWER SOURCE.)

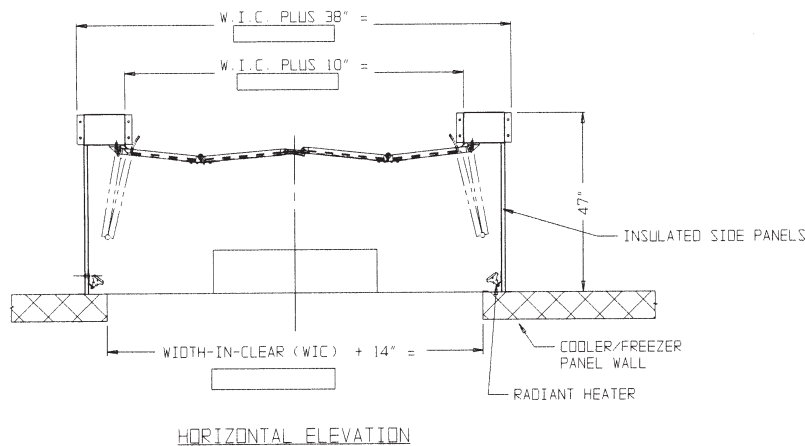
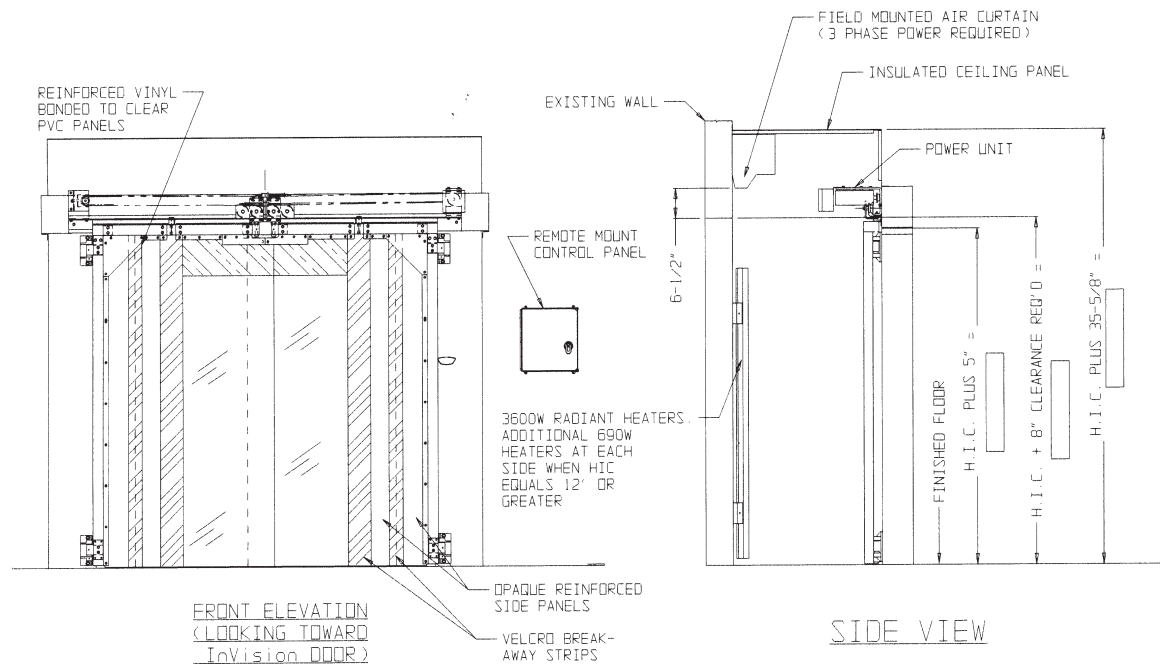
NOTE — Door may sweat or frost depending on relative humidity on warm side and temperature differential from front to back of door.

#### OPTIONS: (Specify which options are desired)

1. Floor Loop Control Box with time delay closing.
2. Motion detector with time delay closing.
3. Electric eye with time delay closing.
4. Electronic radio control operation from lift truck.

\*Velcro is Registered Trademark of Velcro Corporation

\*\*UL is a Registered Trademark of Underwriters Laboratories



**SIZES AVAILABLE:**

Standard sizes from 6'0" through 10'0" width in clear x 8'0" through 14'0" height in clear. Special sizes available, contact factory.

**CAUTION NOTE:**

BUCKS, BUCK DESIGN AND DIMENSIONS AND VAPOR SEALING BY OTHERS.

**INSTALLATION POINTS:**

1. Bucks should be installed true, plumb and square and of sufficient size to accommodate door weight. Wood bucks should be painted with a suitable preservative to protect against moisture penetration into wood.
2. Unit is factory wired and tested. For shipment, wired power package including control box, and door leaves are disconnected and shipped separately. Field wiring: After erection and mechanical adjustment of door and frame, reconnect door wiring to control box in accordance with wiring diagram by use of color coded leads. Follow electrical diagram for connection of incoming power to control box.
3. Provide 240 or 480 Volt AC, 60 Hertz, three phase line for radiant heaters. Hook up pull cord switches from control box to locations in front and back of door. Door has heated pull cord switch on cold side. Separate 120 volt circuit for heated pull cord switch must be furnished.
4. All lags, screws and joints between buck and door frame should be vapor sealed with oil-suspended, nonhardening, waterproof caulking compound or similar material.
5. Drawings for buck suggestions and guard post locations to protect door and frame, available upon request.



Jamison Door Company • P. O. Box 70 • Hagerstown, MD 21741-0070  
 Call Toll Free • 1-800-532-3667 or 301-733-3100  
 FAX: 301-791-7339  
 INTERNET: <http://www.jamisondoor.com>  
 E-MAIL: [contact@jamisondoor.com](mailto:contact@jamisondoor.com)