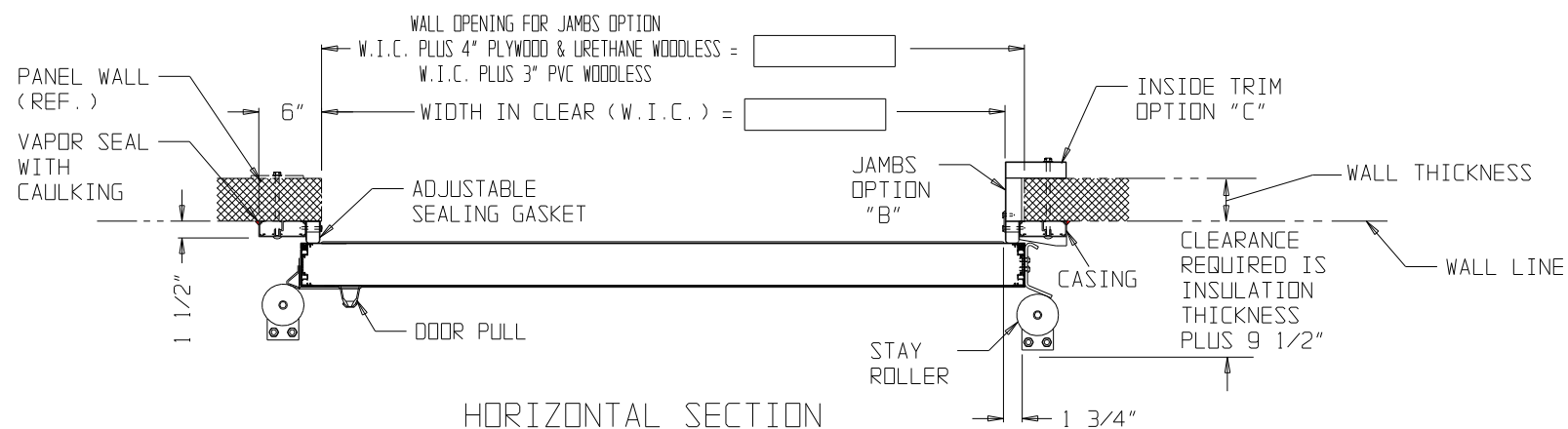
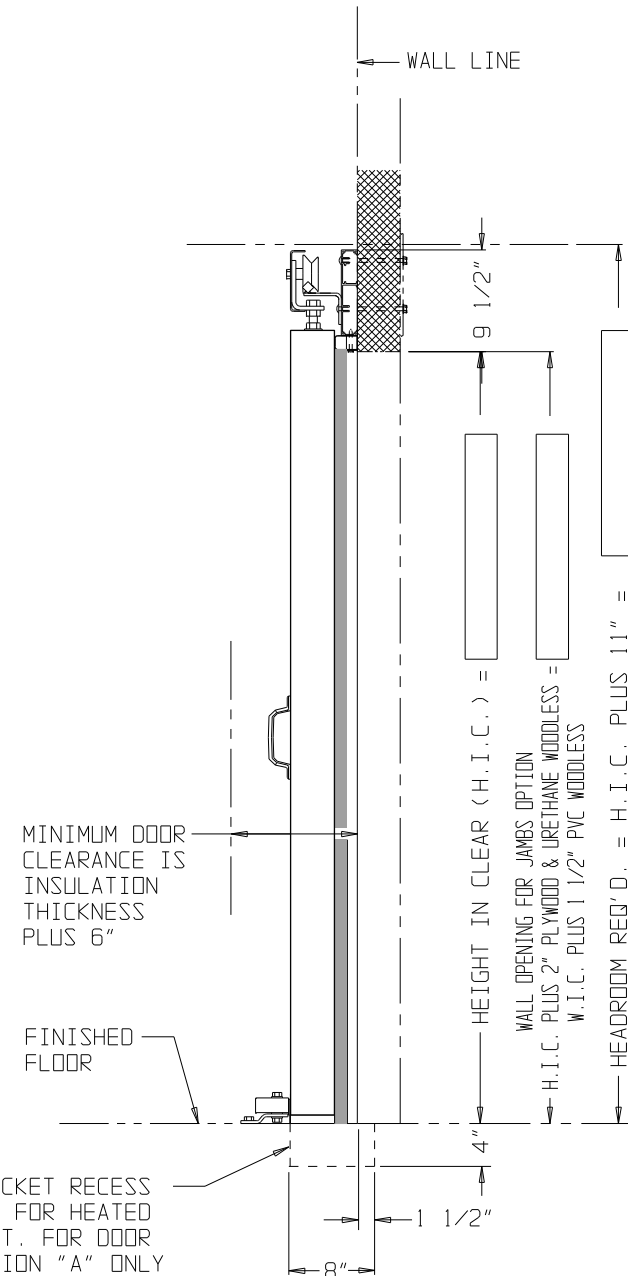


FRONT ELEVATION

R.H. SLIDE DOOR SHOWN - L.H. SLIDE DOOR OPPOSITE



HORIZONTAL SECTION



VERTICAL SECTION

- NOTES:**
- DOOR PANEL "JAMIFDAM" POLYURETHANE INSULATED.
 R32 @ 20* F 4" INSULATED
 R48 @ 20* F 6" INSULATED
 A. COOLER DOOR 4" STD.
 B. FREEZER DOOR 4" STD.
 C. FREEZER DOOR 6" STD.
 - DOOR #24 GAUGE STAINLESS STEEL ON FRONT, BACK AND EDGES.
 - CASING FRAME AND HEADER EXTRUDED ALUMINUM CLAD ON EXPOSED SURFACES WITH #24 GAUGE STAINLESS STEEL.
 - THE FOLLOWING DOOR HARDWARE WILL BE STAINLESS STEEL:
 TRACK ASSEMBLY, CARRIER ASSEMBLY INCLUDING HANGER BRACKETS AND TROLLEY ROLLERS, DRIVE CHAIN, LIMIT SWITCH CHAIN, STRAFING BAR, GASKET ASSEMBLY RETAINER, IDLER ASSEMBLY, CHAIN LOCK ASSEMBLY, DOOR ASSEMBLY FASTENERS, INSTALLATION FASTENERS, CONTROL PANEL (NEMA 4X)
 - FRONT AND BACK DOOR PULLS TO BE POWDER COATED FINISH.
 - BUCK SUGGESTIONS PER DRAWING BJ-9044-33.
 - INSTALLER TO CONNECT ELECTRICAL POWER TO CONTROL PANEL AND END OF HEADER ON FREEZER DOORS (120 V.) THROUGH DISCONNECT SWITCHES. DISCONNECT SWITCHES AND WIRING NOT BY JAMISON.
 - FREEZER DOORS - "FROSTOP AT FOUR SIDES OF DOOR STANDARD.
 - DOOR SEALED TO MEET U.S.D.A., M.I.D. SPECIFICATIONS.
 - OPTIONS:** YES NO
 - A. "FROSTOP" - 4 SIDES OF DOOR AND 4 SIDES OF FRAME.
 - B. JAMBS, PLYWOOD CLAD TO MATCH DOOR. SPECIFY WALL THICKNESS
 - C. INSIDE TRIM, 1 1/2" x 6" PLYWOOD CLAD TO MATCH DOOR.
 - D. MIRROR IMAGE FRAME
 - E. JAMB & TRIM CONSTRUCTION
 - PLYWOOD METAL CLAD
 - WOODLESS URETHANE
 - WOODLESS PVC
 - F. KICKPLATE, DOOR - GAUGE
 - HEIGHT _____
 - G. KICKPLATE, FRAME - GAUGE
 - HEIGHT _____
 - H. LEADING EDGE GUARD
 - 20 GA. SST _____ HEIGHT _____
 - 20 GA. GALV _____ HEIGHT _____
 - * I. PADLOCKING (SEE SCHEDULE)
 - J. VIEW WINDOWS, SIZE 12" x 14" STD. OTHER, SPECIFY _____
 - K. HIGH HEAT INSULATION
 - L. DOE COMPLIANT (FREEZERS ONLY)
 - M. OTHER _____

DOOR NUMBER	QUANTITY	SIZE IN CLEAR		SLIDE		*PADLOCKING PROVISIONS				TEMPERATURE CONDITIONS		
		W.I.C.	H.I.C.	L.H.	R.H.	NO	YES	SAFETY RELEASE	NO	FRONT	BACK	

CAUTION

- NOTE-1: DO NOT SCALE DIMENSIONS.
 NOTE-2: DO NOT SCALE BUCKS. BUCK SIZE AND DESIGN BY OTHERS, GOVERNED BY DOOR SIZE, WALL CONSTRUCTION AND CEILING HEIGHT.
 NOTE-3: GREATER CLEARANCE MAY BE REQUIRED AT SIDES AND/OR HEAD BY CERTAIN JOB CONDITIONS SUCH AS HIGHER SILL BEVEL OR OBSTRUCTIONS NECESSITATING COCKING OR TILTING FRAME INTO OPENING, ETC.

CUSTOMER:

SCALE(S) NONE
 DATE XX/XX/XX DRAWN XXX
 CHECKED APPROVED
 JAMISON DOOR COMPANY
 P. O. BOX 70
 HAGERSTOWN, MARYLAND 21741

JOB NAME
 XXXXXX
 TITLE MARK IV SINGLE MANUALLY OPERATED FOOD PRO DOOR

S/O
 REVISIONS
 NO. H4404883F