

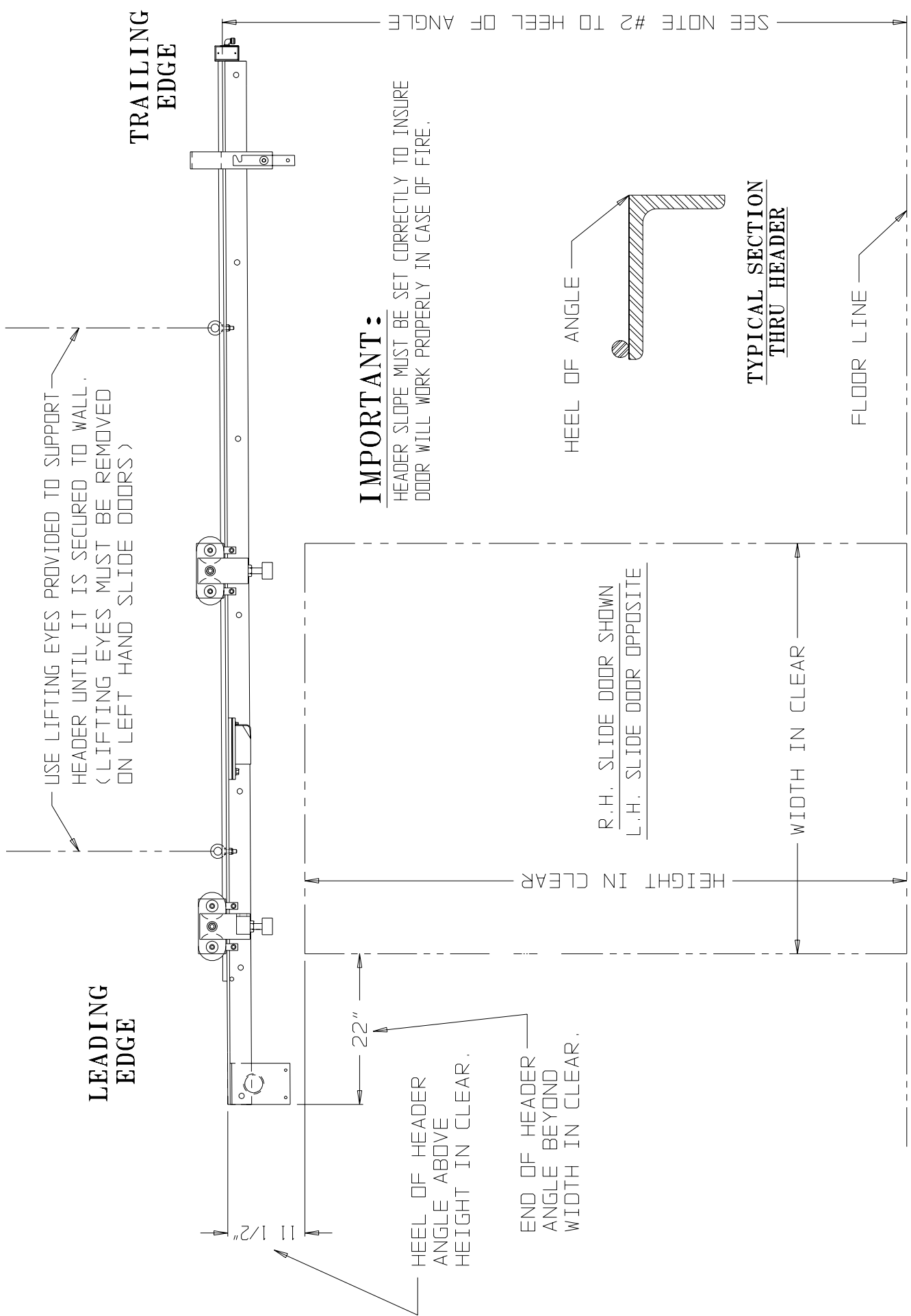
"FIRETEMP" INSTALLATION INSTRUCTIONS

SINGLE HORIZONTAL SLIDING MANUAL DOOR

H4426038B

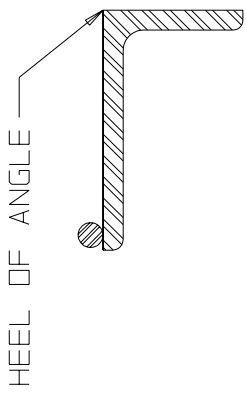
INDEX SHEET

COVER SHEET	1
INDEX	2
HEADER INSTALLATION	3
HEADER INSTALLATION	4
WALL BINDER INSTALLATION	5
WALL BINDER INSTALLATION	6
STAY ROLLER LOCATION	7
GASKET INSTALLATION	8
TRAILING EDGE WEDGE INSTALLATION	9
DOOR LEAF INSTALLATION	10
DOOR HANGER CONNECTION	11
STAY ROLLER INSTALLATION AND ADJUSTMENT	12
TOP SEALING WEDGE ADJUSTMENT	13
ELECTRICAL DROP LOOP CONNECTION	14
FUSIBLE LINK AND COUNTERWEIGHT RIGGING	15
SEALING ADJUSTMENTS	16
LUBRICATION INSTRUCTIONS	17
SINGLE MANUAL DOOR FUSIBLE LINK AND COUNTERWEIGHT ASSEMBLY - H4426077	18



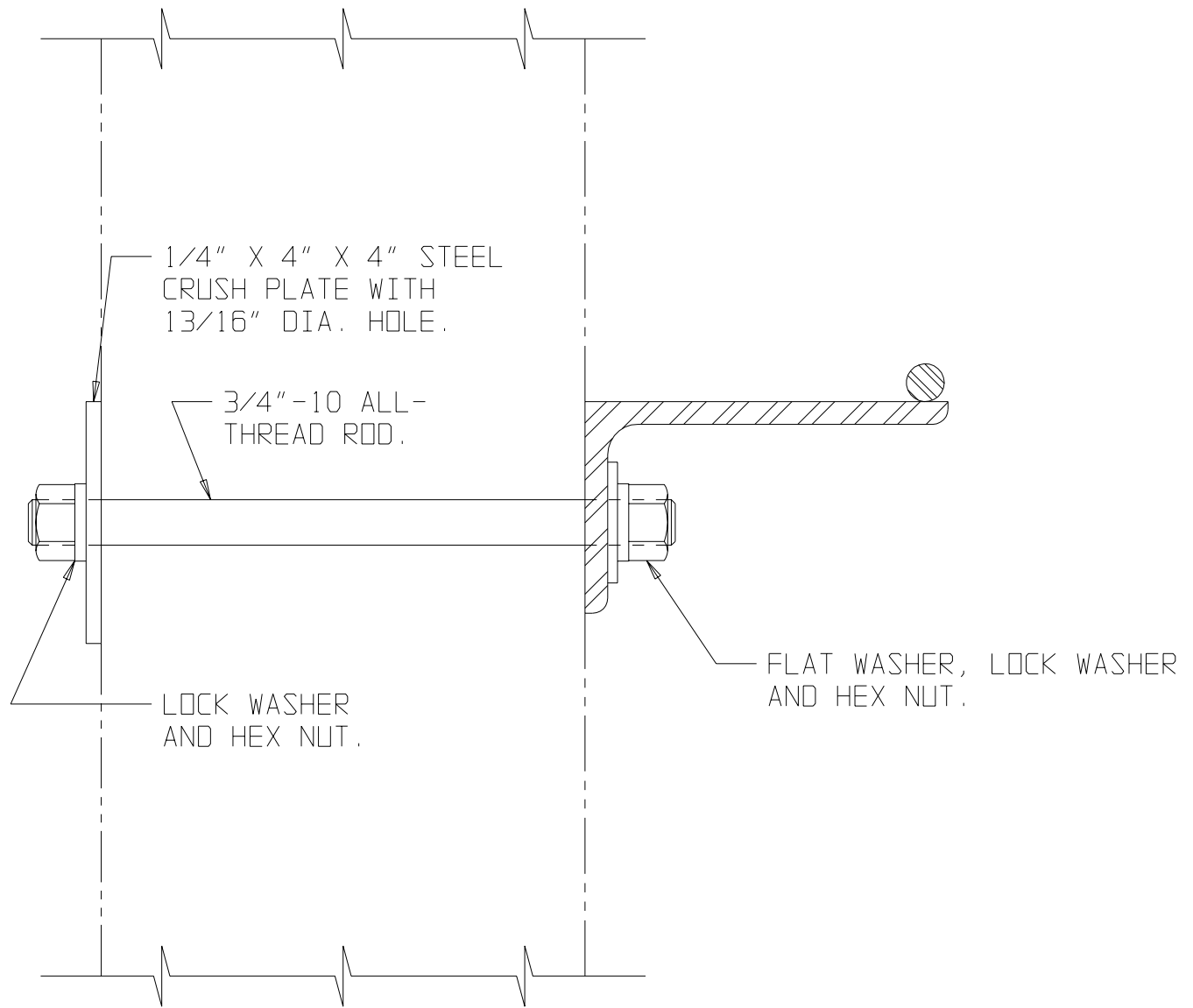
USE LIFTING EYES PROVIDED TO SUPPORT HEADER UNTIL IT IS SECURED TO WALL. (LIFTING EYES MUST BE REMOVED ON LEFT HAND SLIDE DOORS)

IMPORTANT:
 HEADER SLOPE MUST BE SET CORRECTLY TO INSURE DOOR WILL WORK PROPERLY IN CASE OF FIRE.



HEEL OF HEADER ANGLE ABOVE HEIGHT IN CLEAR.
 END OF HEADER ANGLE BEYOND WIDTH IN CLEAR.

1. SET LEADING EDGE OF HEADER ASSEMBLY TO DIMENSIONS SHOWN.
2. SET TRAILING EDGE OF HEADER ASSEMBLY TO HEIGHT OF LEADING EDGE PLUS 1/16" RISE PER FOOT OF HEADER LENGTH.

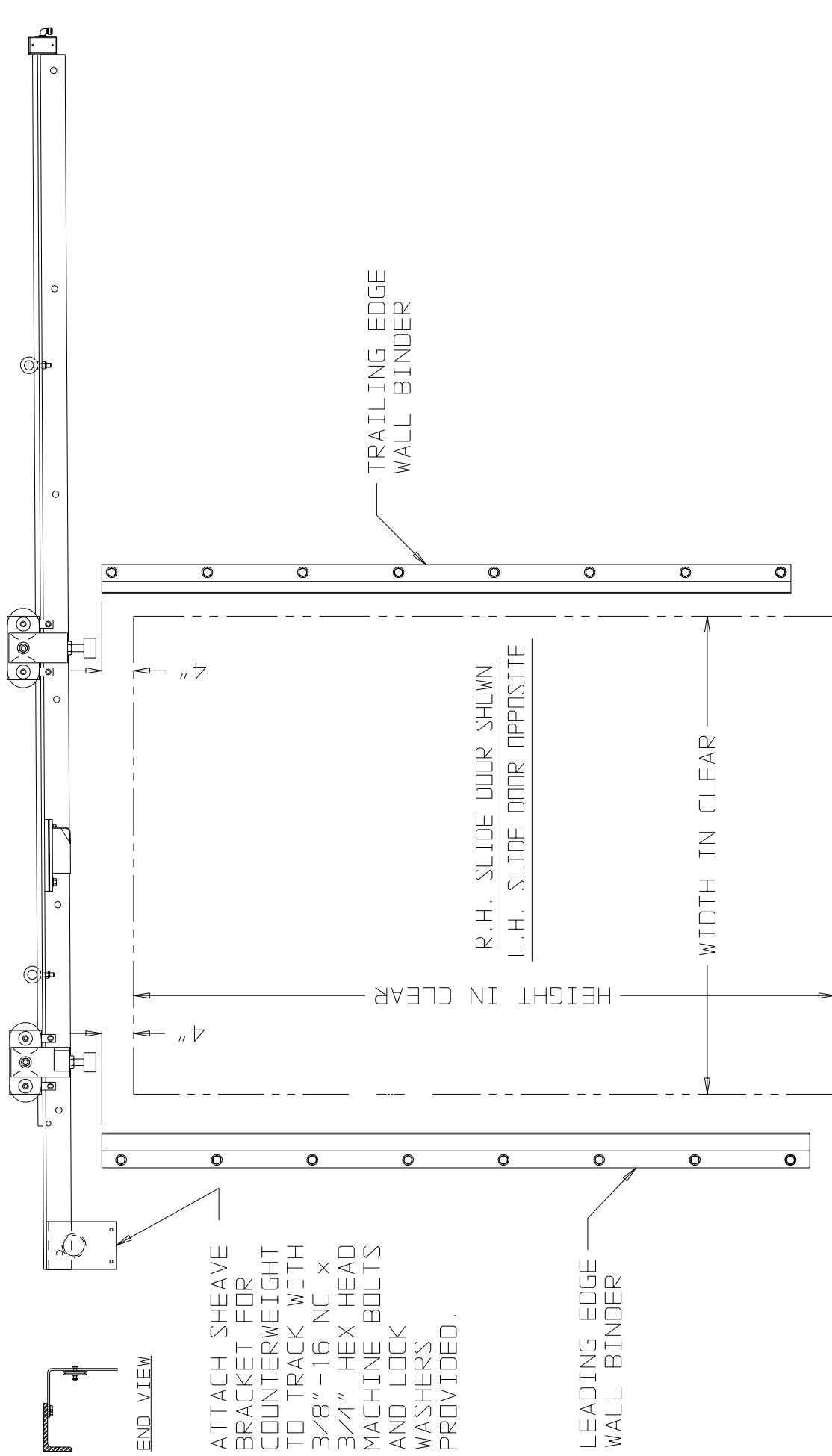


TYPICAL SCCTION THRU HEADER

1. USING HEADER AS A TEMPLATE DRILL 13/16" DIA. THRU MASONRY WALL.
2. ALL THREAD RODS MUST BE CUT TO LENGTH BY INSTALLER. OVERALL ROD LENGTH EQUALS WALL THICKNESS PLUS 3" .
3. INSTALL THRU ROD, CRUSH PLATE, FLAT WASHER, LOCK WASHERS, AND HEX NUTS AS SHOWN.
4. AFTER ALL THRU RODS ARE INSTALLED, TIGHTEN ASSEMBLY, TORQUE TO 200 FOOT POUNDS.

**LEADING
EDGE**

**TRAILING
EDGE**



END VIEW

ATTACH SHEAVE
BRACKET FOR
COUNTERWEIGHT
TO TRACK WITH
3/8" - 16 NC x
3/4" HEX HEAD
MACHINE BOLTS
AND LOCK
WASHERS
PROVIDED.

LEADING EDGE
WALL BINDER

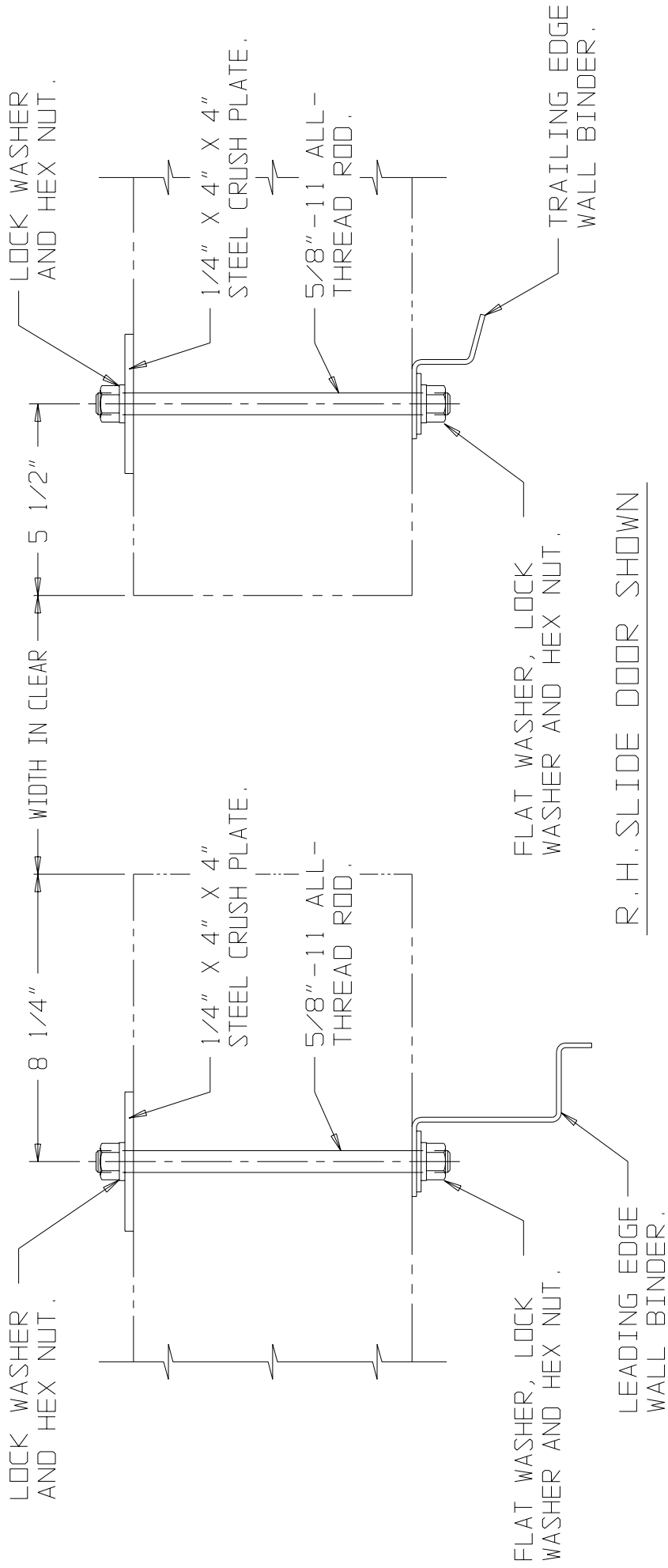
TRAILING EDGE
WALL BINDER

R.H. SLIDE DOOR SHOWN
L.H. SLIDE DOOR OPPOSITE

HEIGHT IN CLEAR

WIDTH IN CLEAR

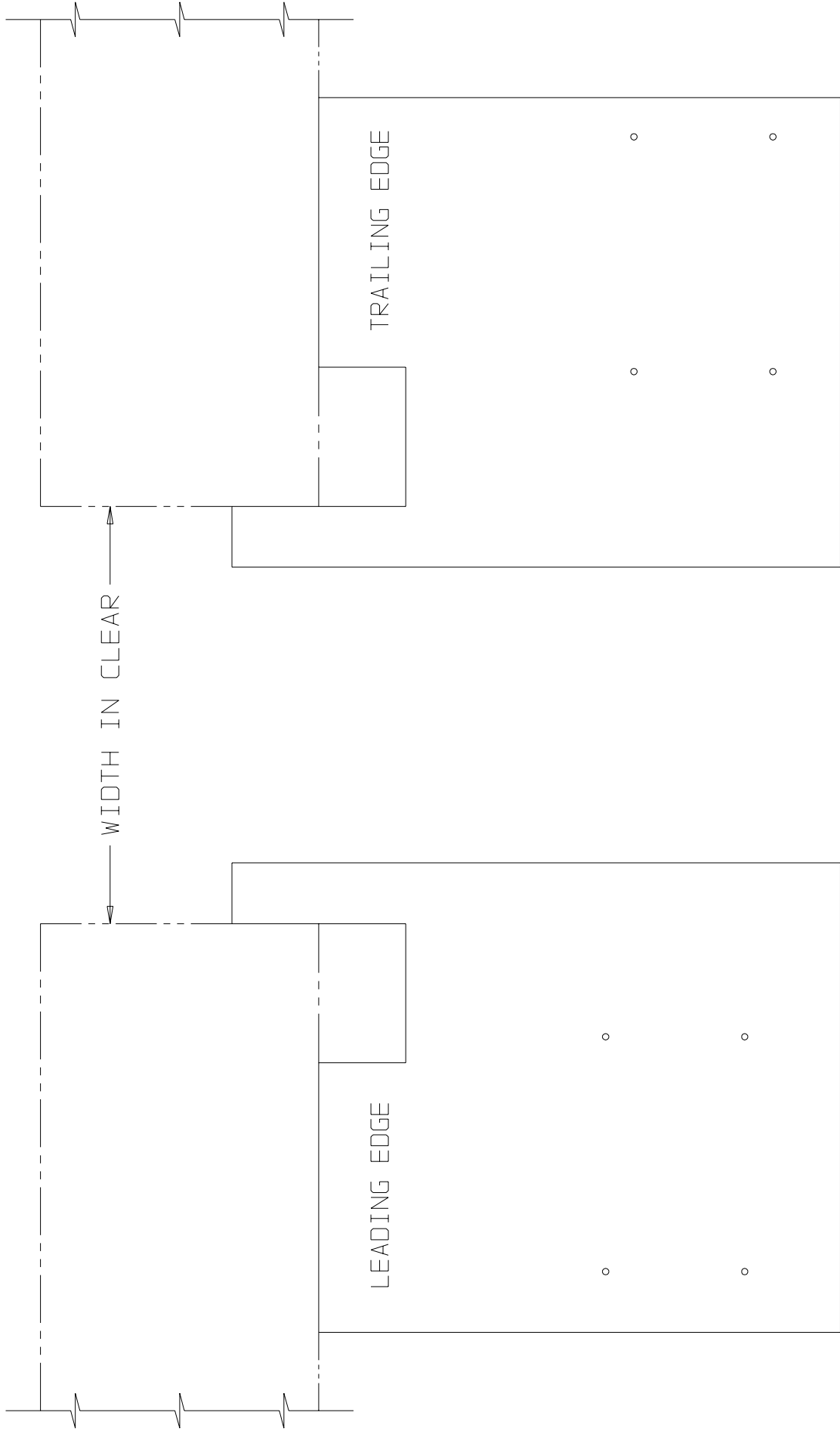
1. SET LEADING AND TRAILING EDGE BINDER HEIGHT TO DIMENSIONS SHOWN.
2. ATTACH SHEAVE BRACKET FOR COUNTERWEIGHT AS SHOWN.
3. SEE SHEET #6 FOR FURTHER INSTRUCTIONS.



R.H. SLIDE DOOR SHOWN

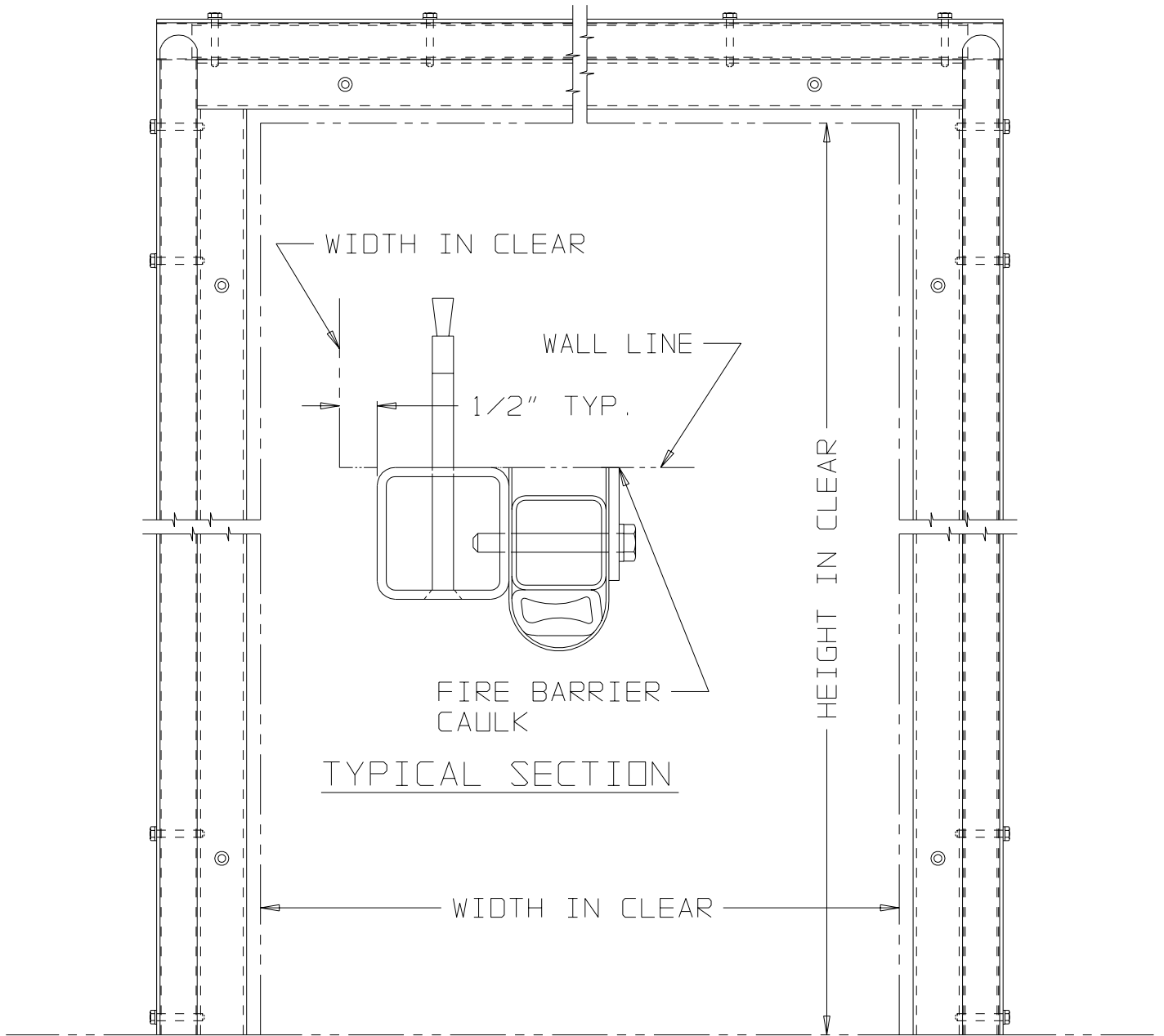
L.H. SLIDE DOOR OPPOSITE

1. USING LEADING AND TRAILING EDGE WALL BINDERS AS TEMPLAETS TO LOCATE CENTER OF EACH SLOTTED HOLE, THEN DRILL 1 1/16" DIA. HOLES THRU MASONRY WALL.
2. THRU RODS MUST BE CUT TO LENGTH BY INSTALLER, OVERALL ROD LENGTH TO WALL THICKNESS PLUS 2 1/2"
3. INSTALL THRU ROD, CRUSH PLATE, FLAT WASHER, LOCK WASHERS AND HEX NUTS AS SHOWN.
4. AFTER ALL THRU RODS HAVE BEEN INSTALLED TIGHTEN ASSEMBLY, TORQUE TO 115 FOOT POUNDS.

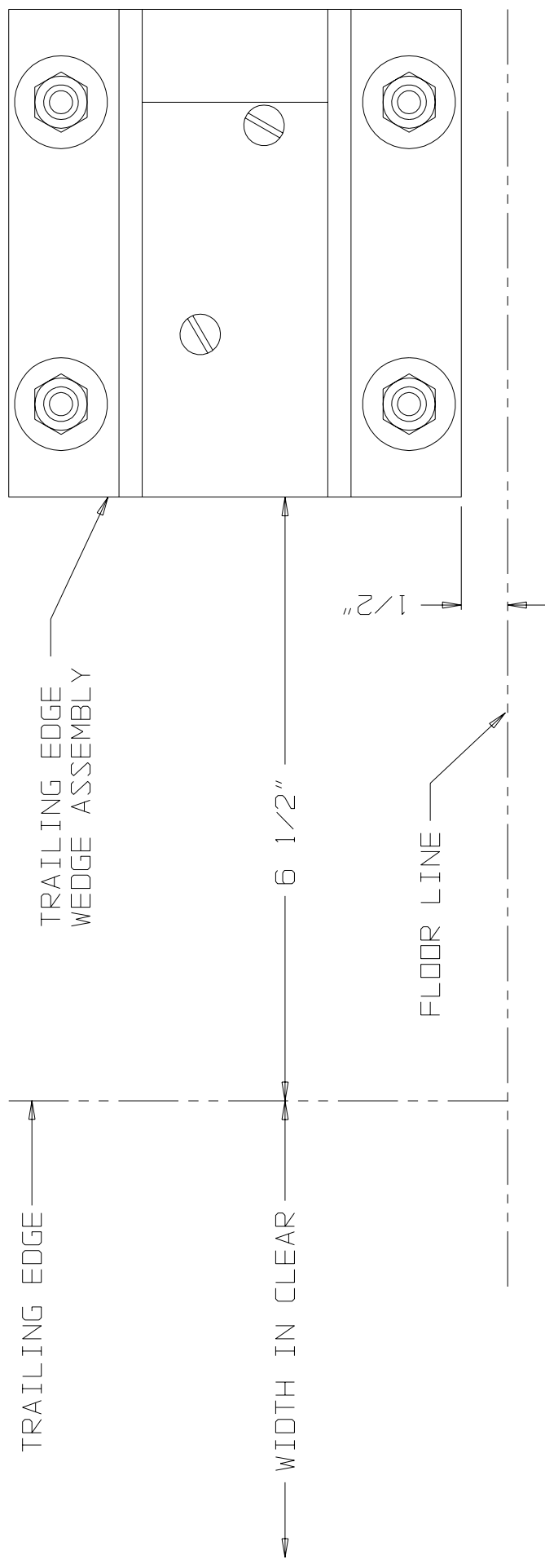


R.H. SLIDE DOOR SHOWN - L.H. SLIDE DOOR OPPOSITE

1. USING STAY ROLLER LOCATING TEMPLATES PROVIDED, MARK HOLES ON FLOOR.
2. DRILL FLOOR 3/8" DIA. X 4" DEEP, 8 - HOLES.
3. DO NOT INSTALL STAY ROLLERS AT THIS TIME.

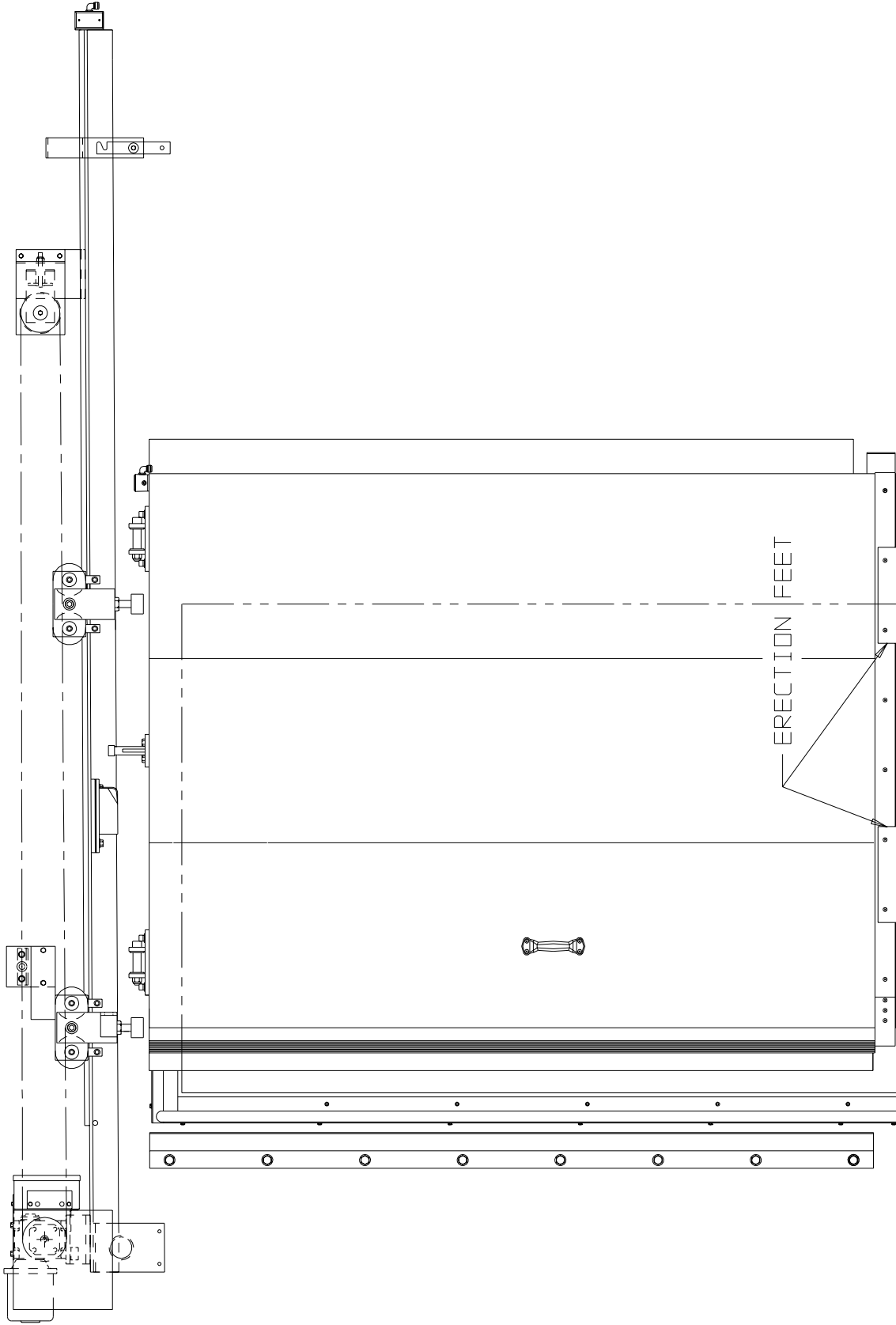


1. SET AND CLAMP FRAME GASKET ASSEMBLY MEMBERS IN PLACE PER DIMENSIONS SHOWN.
2. USING FRAME GASKET ASSEMBLY MEMBERS AS A TEMPLATE, DRILL MASONRY WALL 1/4" DIA. X 3" DEEP AT ALL COUNTERSUNK HOLES.
3. SECURE ASSEMBLY TO WALL WITH 1/4" X 4" LG. CONCRETE ANCHORS SUPPLIED.
4. APPLY A GENEROUS BEAD OF 3M FIRE BARRIER CP 25WB+ CAULK OR EQUIVALENT (NOT BY JAMISON), TO SEAL GASKET ASSEMBLY TO WALL AROUND OUTSIDE EDGE.



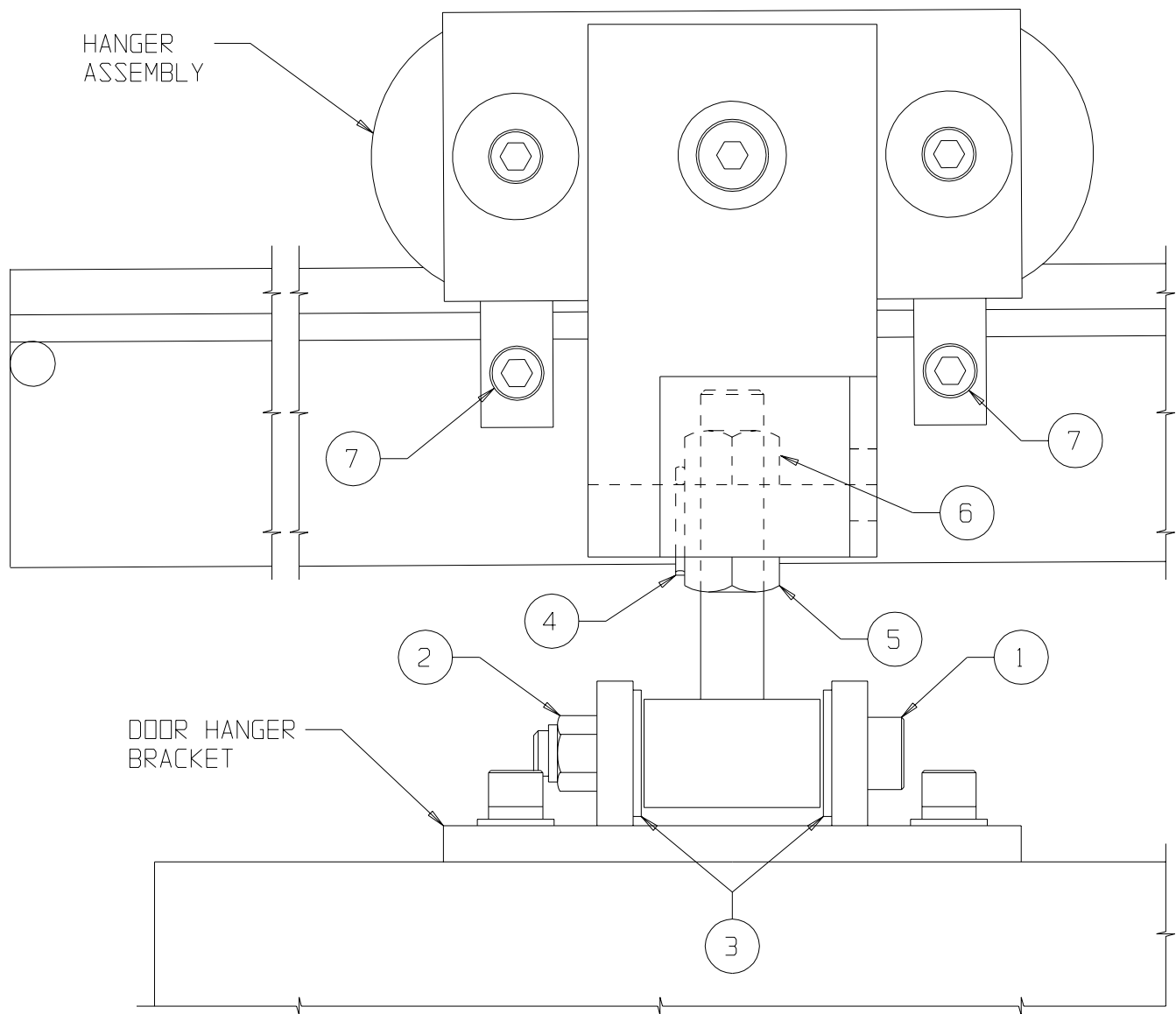
R.H. SLIDE DOOR SHOWN - L.H. SLIDE DOOR OPPOSITE

1. LOCATE TRAILING EDGE WEDGE ASSEMBLY PER DIMENSIONS SHOWN.
2. USING TRAILING EDGE WEDGE ASSEMBLY AS A TEMPLATE MARK AND DRILL 3/8" DIA. X 3 1/2" DEEP, 4 - HOLES.
3. ATTACH ASSEMBLY TO WALL WITH 3/8" X 3" LG. CONCRETE ANCHORS PROVIDED.



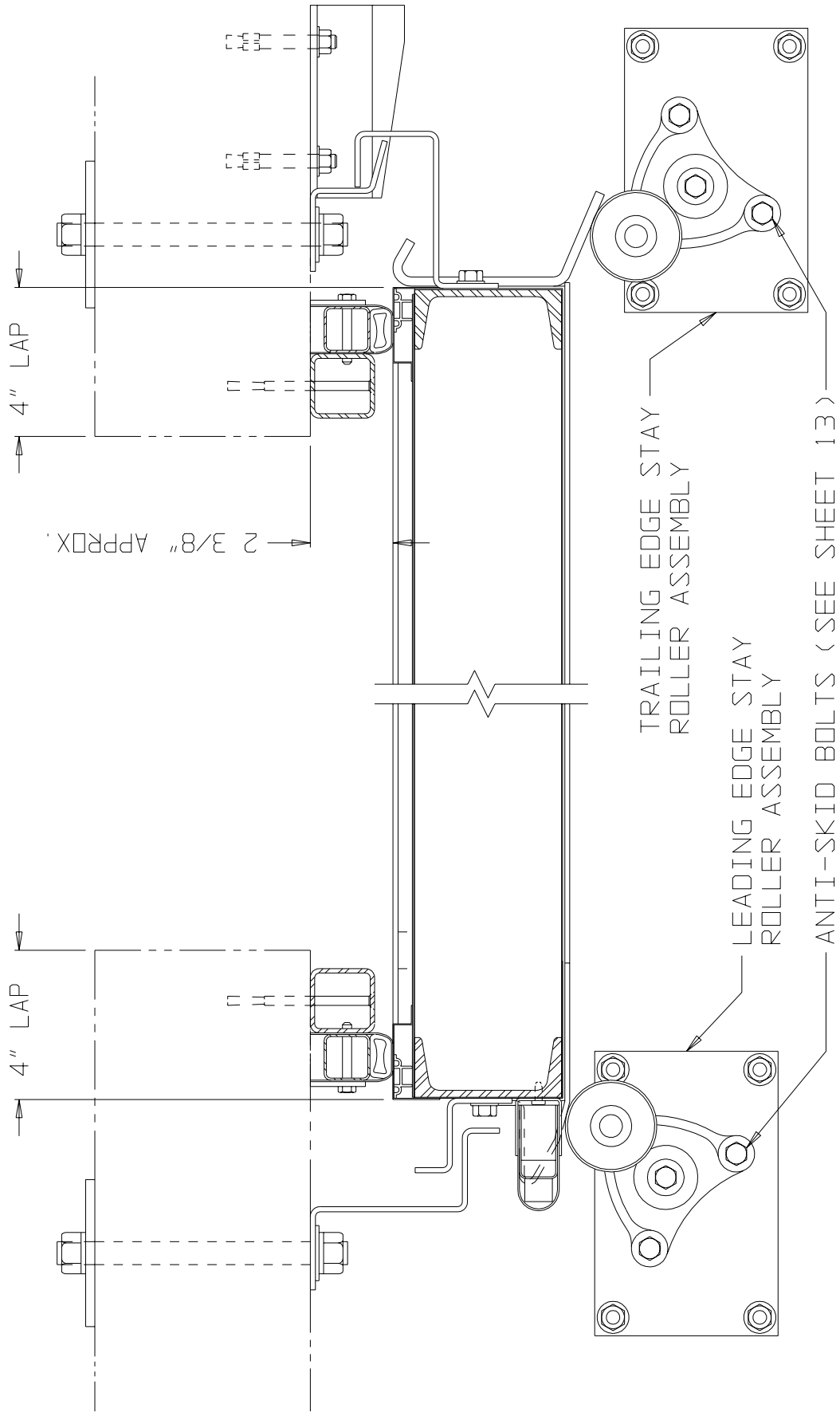
R.H. SLIDE DOOR SHOWN - L.H. SLIDE DOOR SHOWN

1. SET DOOR PANEL ON TO ERECTION FEET IN FRONT OF OPENING (APPROXIMATELY 6" FROM SEALED POSITION).
1. SUPPORT DOOR PANEL SECURLEY AT TOP UNTIL TOP HANGER ASSEMBLIES ARE INSTALLED.



LEADING EDGE SHOWN - TRAILING EDGE SIMILAR

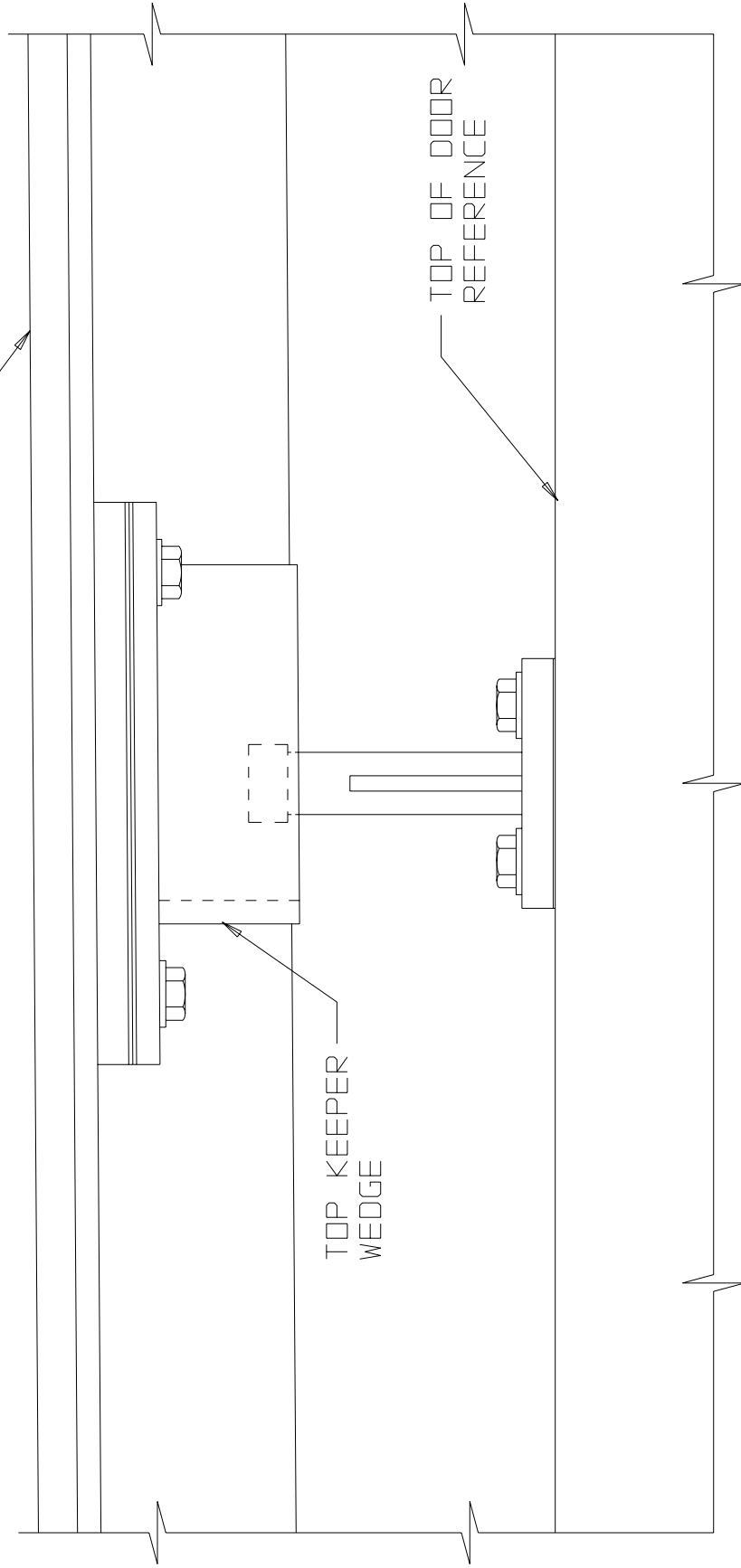
1. REMOVE SHOULDER BOLT, LOCK NUT AND WASHERS (ITEMS #1, #2 AND #3) FROM DOOR HANGER BRACKET.
2. REMOVE COTTER PIN (ITEM #4) AND LOOSEN JAM NUT (ITEM #5). ADJUST HANGER TEE TO ALIGN HOLE WITH HOLES IN HANGER BRACKET, BY ADJUSTING NUT (ITEM #6).
3. RE-INSTALL SHOULDER BOLT, FLAT WASHERS AND LOCK NUT (ITEMS #1, #2 AND #3).
4. ADJUST NUT (ITEM #6) TO MOVE DOOR PANEL UPWARDLY SO THAT GASKET ON BOTTOM OF DOOR PANEL JUST BRUSHES THE SILL AND WEIGHT OF DOOR PANEL HAS BEEN TRANSFERED FROM ERECTION FOOT TO HANGER ASSEMBLY.
5. REPETE STEPS #1 THRU #4 AT TRAILING EDGE.
6. AFTER ADJUSTMENTS ARE COMPLETED RE-TIGHTEN JAM NUT (ITEM #5) AND RE-INSTALL COTTER PIN (ITEM #4).
7. REMOVE ERECTION FEET FROM BOTTOM OF DOOR AND REPLACE SCREWS TO PLUG HOLES.



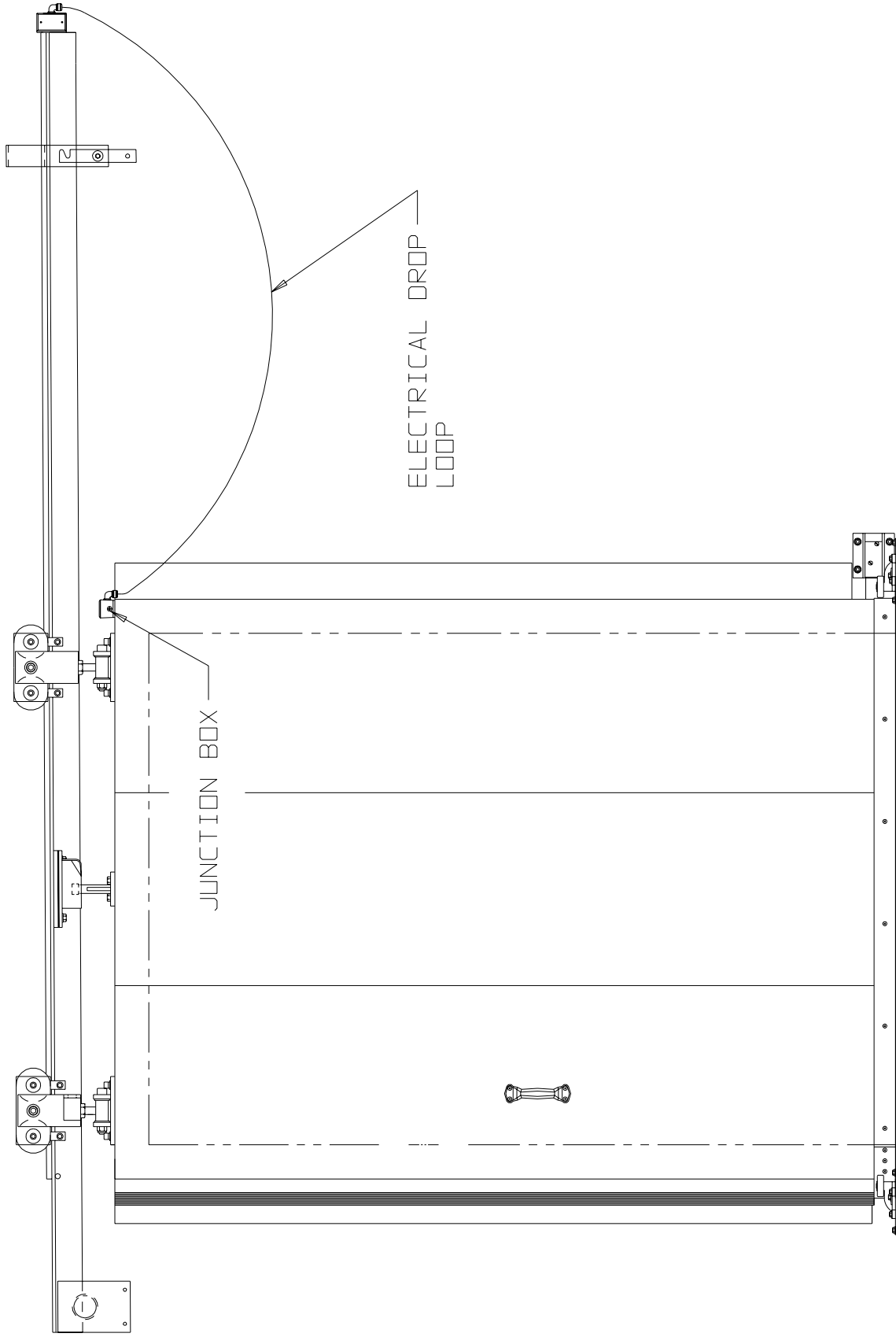
R.H. SLIDE DOOR SHOWN - L.H. SLIDE DOOR OPPOSITE

1. INSTALL LEADING AND TRAILING EDGE STAY ROLLER ASSEMBLIES, USING HOLES ALREADY DRILLED IN FLOOR AND 3/8" X 3" LG. CONCRETE ANCHORS FURNISHED.
2. ADJUST STAY ROLLER TO ACHIEVE PROPER GASKET COMPRESSION AT BOTH LEADING AND TRAILING EDGE.

HEADER (TRACK) ASSEMBLY
REFERENCE

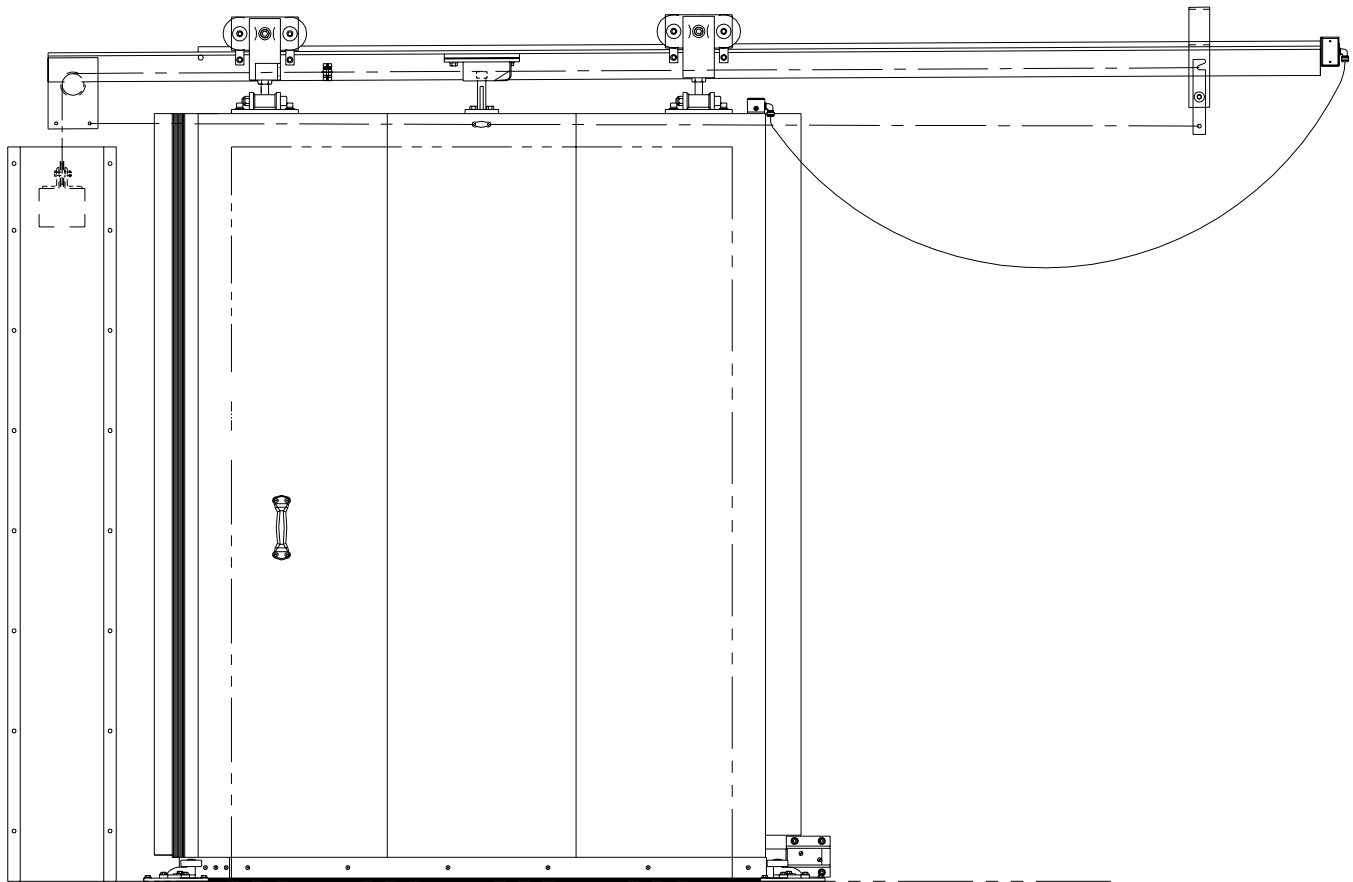


1. ADJUST TOP KEEPER WEDGE TO ACHIEVE PROPER GASKET SEAL AT HEAD OF DOOR, THEN TIGHTEN. GASKET SHOULD BE COMPRESSED APPROXIMATELY 1/16" FOR A PROPER SEAL.
2. MANUALLY OPEN AND CLOSE DOOR AND MAKE SURE DOOR IS PROPERLY SEALED ALL AROUND.
3. WHEN DOOR IS PROPERLY SEALED, DRILL AND TAP STAY ROLLER ANCHOR PLATES FOR ANTI-SKID BOLTS (SEE SHEET 12).



1. CONNECT DROP LOOP FROM END OF HEADER BY CONNECTING MATCHING PRELABELED WIRES IN JUNCTION BOX ON TRAILING EDGE OF DOOR.

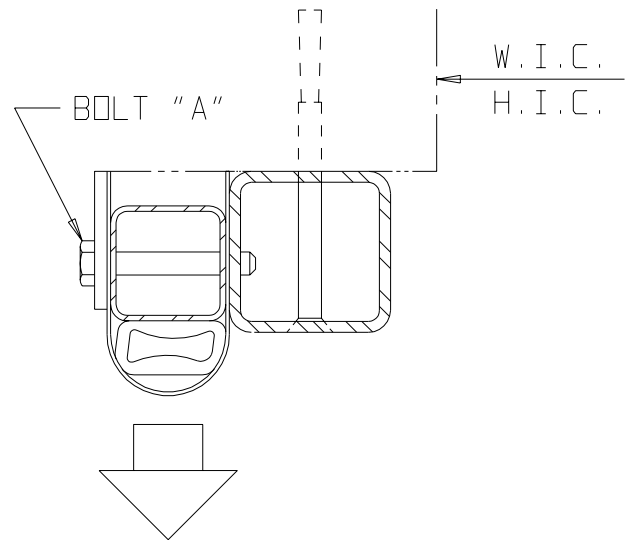
(FOR FREEZER DOORS ONLY)



1. INSTALL FUSIBLE LINK AND COUNTERWEIGHT CLOSING SYSTEM AS SHOWN ON DRAWING AH-4426-77. SUBSTITUTING NYLON WIRE TIE OR OTHER EXPENDABLE MATERIAL FOR FUSIBLE LINK AT THIS TIME.
2. USING CAUTION TO STAY CLEAR OF COUNTERWEIGHT OPEN DOOR UNDER POWER TO FULL OPEN POSITION LEAVING EMERGENCY CONTROLS IN POWER POSITION. MAKE SURE PICK-UP COLLAR (ITEM #4) ON DRAWING AH-4426-77 IS LOCATED AS SHOWN. CUT CABLE TIE TO SIMULATE FUSIBLE LINK FAILURE. DOOR SHOULD CLOSE TO FULL CLOSED POSITION. REPEAT TEST AT LEAST TWO TIMES TO ENSURE SYSTEM WORKS PROPERLY.
3. RECONNECT COUNTERWEIGHT CLOSING SYSTEM USING FUSIBLE LINK. INSTALL COUNTERWEIGHT COVER.

HOW TO ADJUST

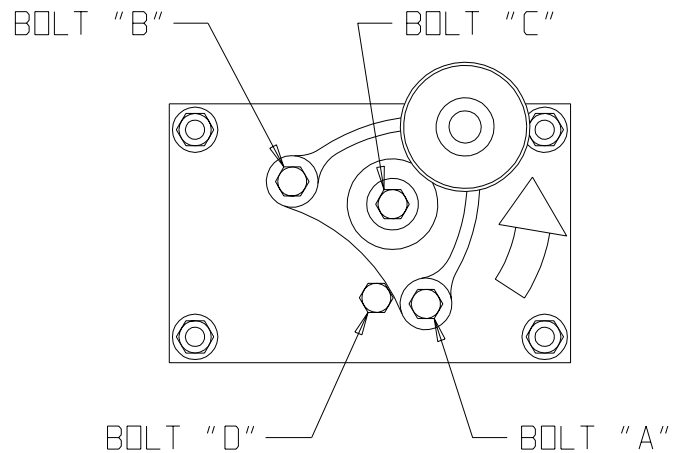
1. MOVE DOOR TO OPEN POSITION, LOOSEN BOLTS "A", AND MOVE GASKET IN OR OUT AS REQUIRED TO OBTAIN A GOOD GASKET SEAL. APPROXIMATELY 1/16" COMPRESSION.
2. RETIGHTEN ATTACHMENT SCREWS.



1. SEALING GASKET ADJUSTMENT

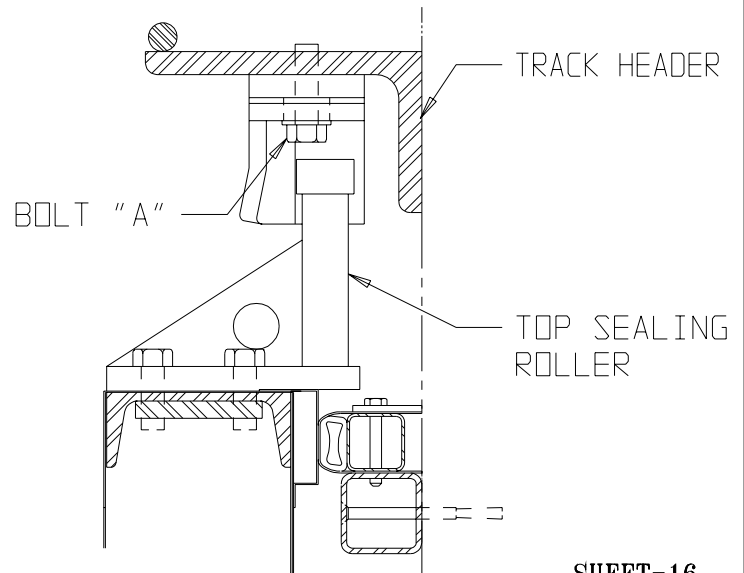
ADDITIONAL STAY ROLLER ADJUSTMENT AFTER ANTI-SKID BOLT "A" HAS BEEN INSTALLED.

1. REMOVE BOLT "A"
2. LOOSEN BOLTS "B AND "C""
3. PIVOT STAY ROLLER AROUND BOLT "B" TO OBTAIN A GOOD GASKET SEAL
4. DRILL ANCHOR PLATE 5/16" DIA. AND TAP 3/8"-16 FOR BOLT "D". INSTALL BOLT "A" INTO HOLE "D".



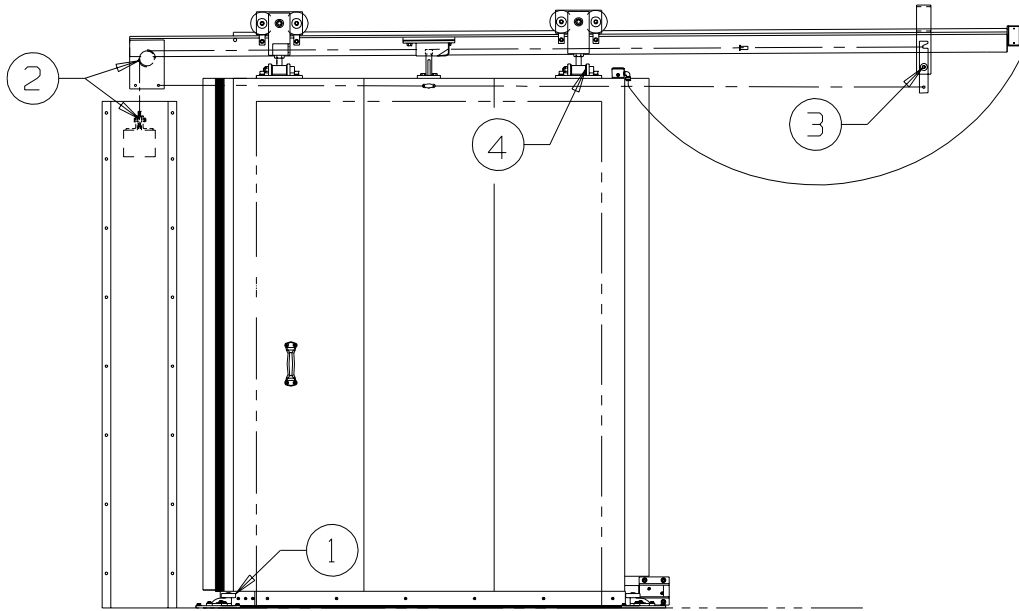
2. STAY ROLLER ADJUSTMENT

1. LOOSEN BOLTS "A" INTO TRACK HEADER.
2. ADJUST DOOR PANEL IN OR OUT AS REQUIRED AND RETIGHTEN BOLTS "A" INTO TRACK HEADER.



3. TOP SEALING ROLLER ADJUSTMENT

SHEET-16
H4426038B



LUBRICATION INSTRUCTIONS

LUBRICATE AT 3 MONTH INTERVALS

GREASE - TO BE GOOD GRADE OF LITHIUM BASE GREASE

OIL - TO BE GOOD GRADE OF S.A.E. 30 NON DETERGENT MOTOR OIL

- 1 - STAY ROLLER OIL
- 2 - COUNTERWEIGHT CABLE SHEAVES ... OIL
- 3 - TRIP ARM PIVOT OIL
- 4 - DOOR HANGER PIVOTS OIL

