

CLOSED CELL NEOPRENE GASKET ADHERED TO ADJUSTABLE STOP ANGLES AT HEAD AND SIDE OF FRAME.

2 X 2 X 1/4" STEEL ADJUSTABLE GASKET ANGLE AT HEAD AND SIDES.

RIGID FRONT SILL SEAL ASSEMBLY
FLOOR LINE IN FRONT OF DOOR.

RIGID BACK SILL SEAL ASSEMBLY

1 1/2 X 1 1/2 X 1/4" STEEL GASKET ANGLE

3/8 X 1 1/2" HALF OVAL WELDED TO SILL

8" STEEL CHANNEL FRAME AT SIDES, HEAD AND SILL

VERTICAL SECTION

FOR MASONRY WALLS:

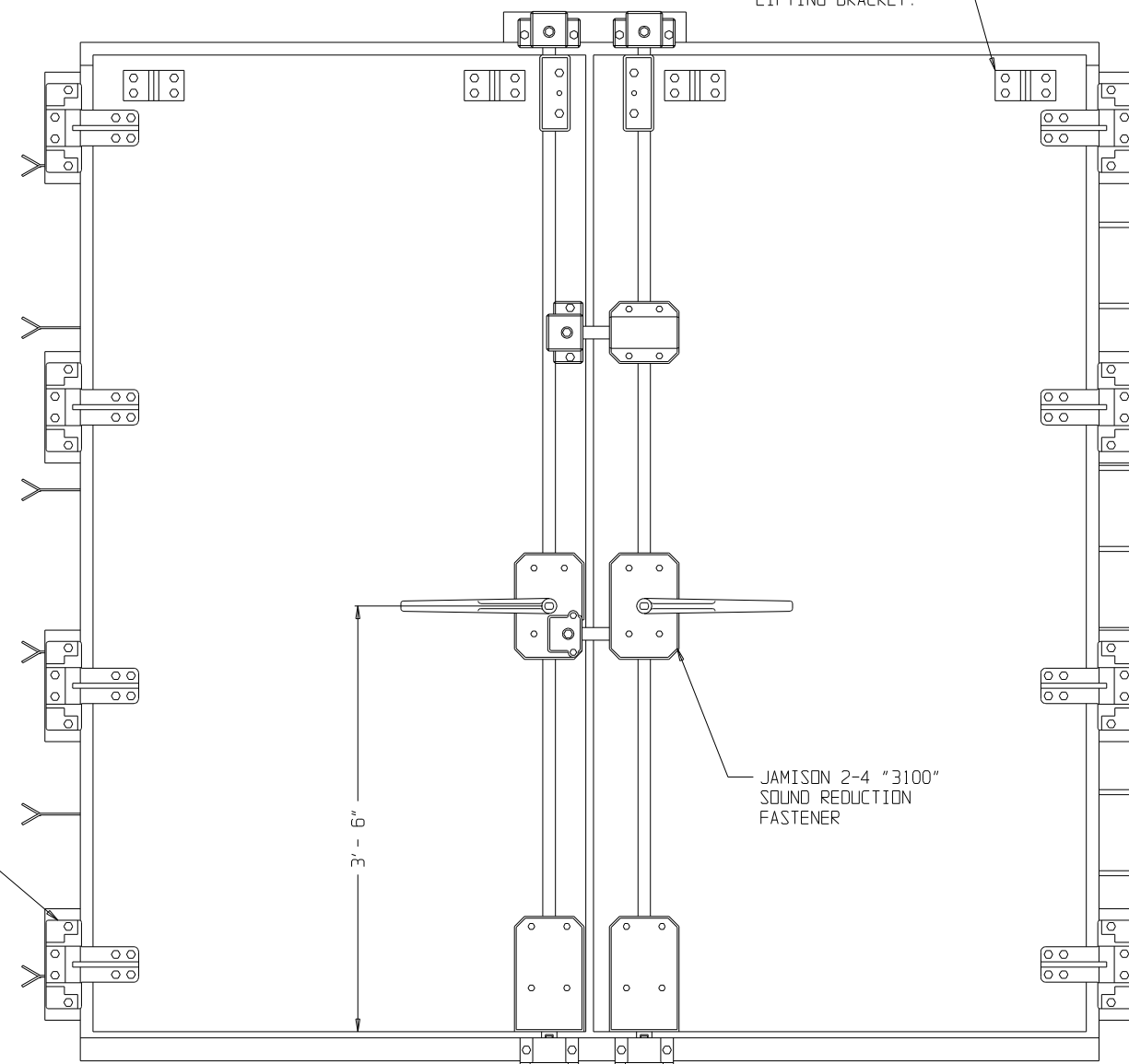
3/16 X 1 1/2 X 8 STEEL ANCHORS LOCATED ON 16" CENTERS.

FOR MONOLITHIC WALLS:
1/2" DIA. X 6 1/8" H4L CONCRETE ANCHORS ON 8" CENTERS AT HEAD AND SIDES

JAMISON FSR HINGE WITH BRONZE THRUST BUSHINGS, 4 REQ'D. PER LEAF. HELD WITH 1/2-13 NC X 1 1/4" LG. HEX HEAD MACHINE BOLTS, 16 PER LEAF.

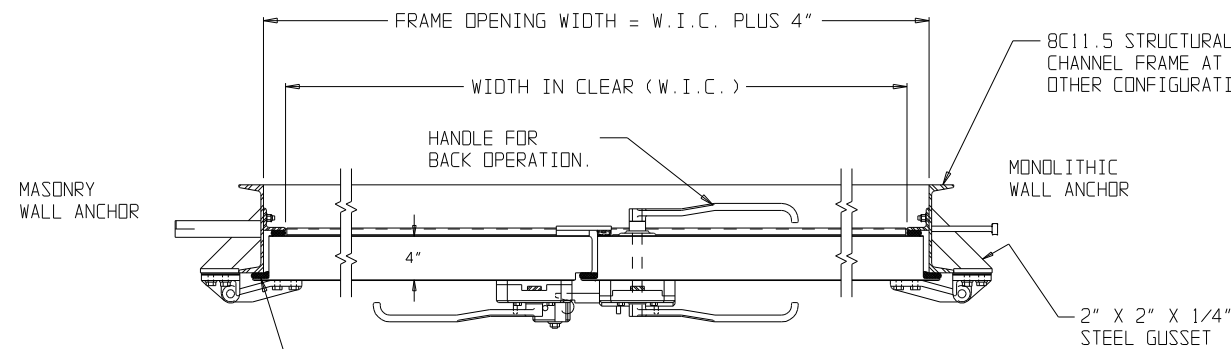
JAMISON CH-4295-21 LIFTING BRACKET.

JAMISON 2-4 "3100" SOUND REDUCTION FASTENER



FRONT ELEVATION

RIGHT HAND ACTIVE LEAF SHOWN - LEFT HAND ACTIVE LEAF OPPOSITE



HORIZONTAL SECTION

CLOSED CELL NEOPRENE GASKET ADHERED TO LIP OF DOOR.

SCALE(S) NONE		JOB NAME					
DATE	DRAWN	SOUND REDUCTION AND SPECIAL SALES					
6-22-92	W.H.B.						
CHECKED	APPROVED	TITLE	LTR	DATE	BY	SUBJECT	
		STC 55 DOUBLE SWING DOOR				REVISIONS	
JAMISON DOOR COMPANY P. O. BOX 70 HAGERSTOWN, MARYLAND 21741						NO. CH-4424-9	