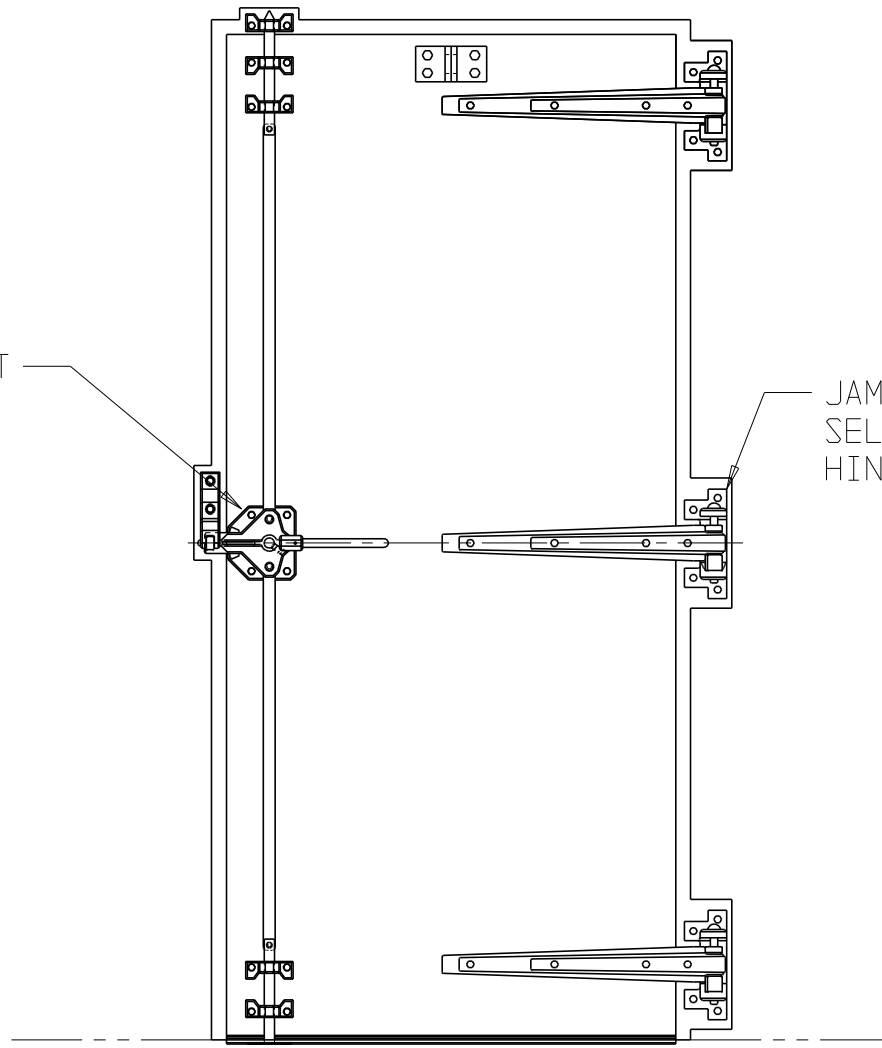


3 POINT
4175
LATCH



JAMISON "JB"
SELF-RISING
HINGE

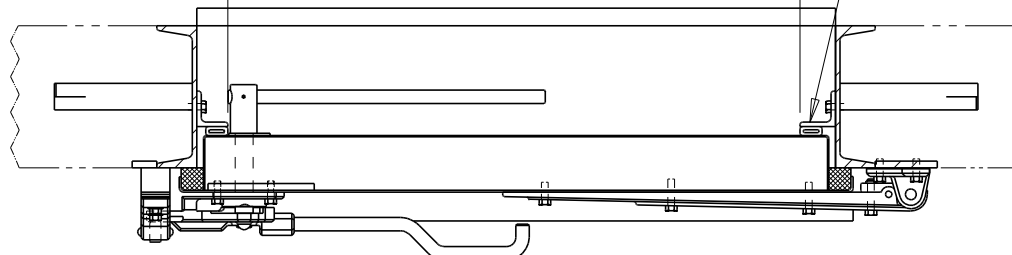
FRONT ELEVATION

R.H. SWING SHOWN - L.H. OPPOSITE

FRAME OPENING WIDTH
= W.I.C. PLUS 4"

WIDTH IN CLEAR (W.I.C.)

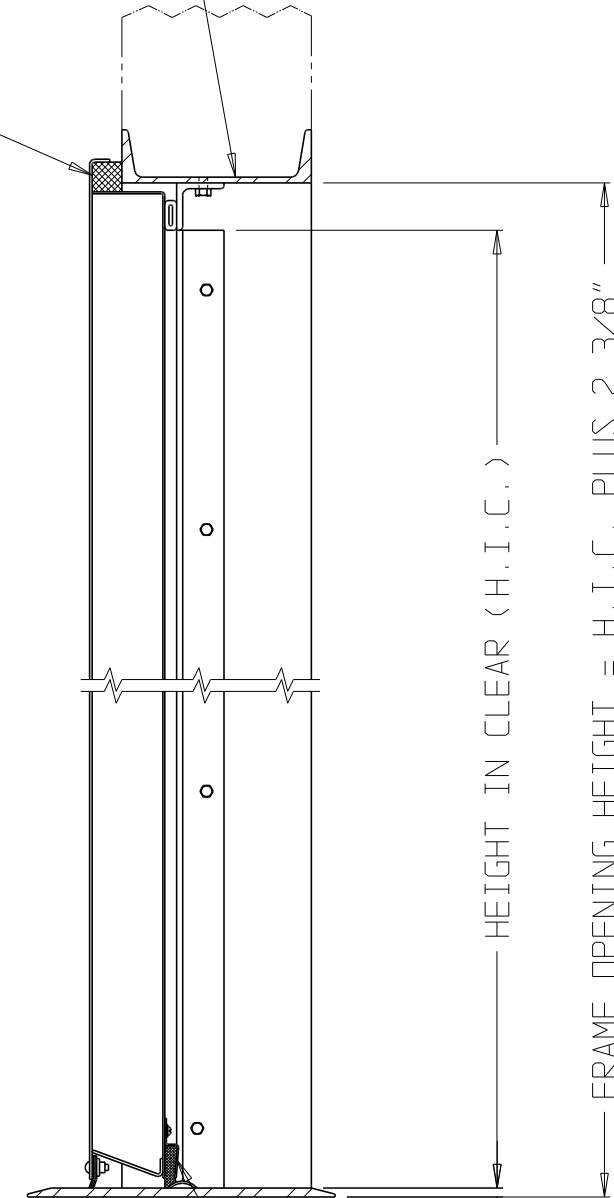
2" X 2" X 1/4" ADJUSTABLE
SEALING ANGLE AT SIDES
AND HEAD



HORIZONTAL SECTION

NEOPRENE SPONGE
GASKET AT SIDES
AND HEAD

8C11.5 STRUCTURAL STEEL CHANNEL
FRAME AT HEAD AND SIDES
OTHER CONFIGURATIONS AVAILABLE



RIGID
SILL SEAL
ASSEMBLY

3/8"

HEIGHT IN CLEAR (H.I.C.)

FRAME OPENING HEIGHT = H.I.C. PLUS 2 3/8"

VERTICAL SECTION

SCALE(S)	NONE	JOB NAME				
DATE	09-19-94	DRAWN	WBN			
CHECKED		APPROVED		A	04-06-17	DFA
JAMISON DOOR COMPANY P. O. BOX 70 HAGERSTOWN, MARYLAND 21741			TITLE	4175 LATCH WAS W2 WEDGETIGHT		
			SINGLE SWING STC 49 SOUND REDUCTION DOOR	LTR	DATE	BY
				REVISIONS		
				NO. CH-4424-22A		