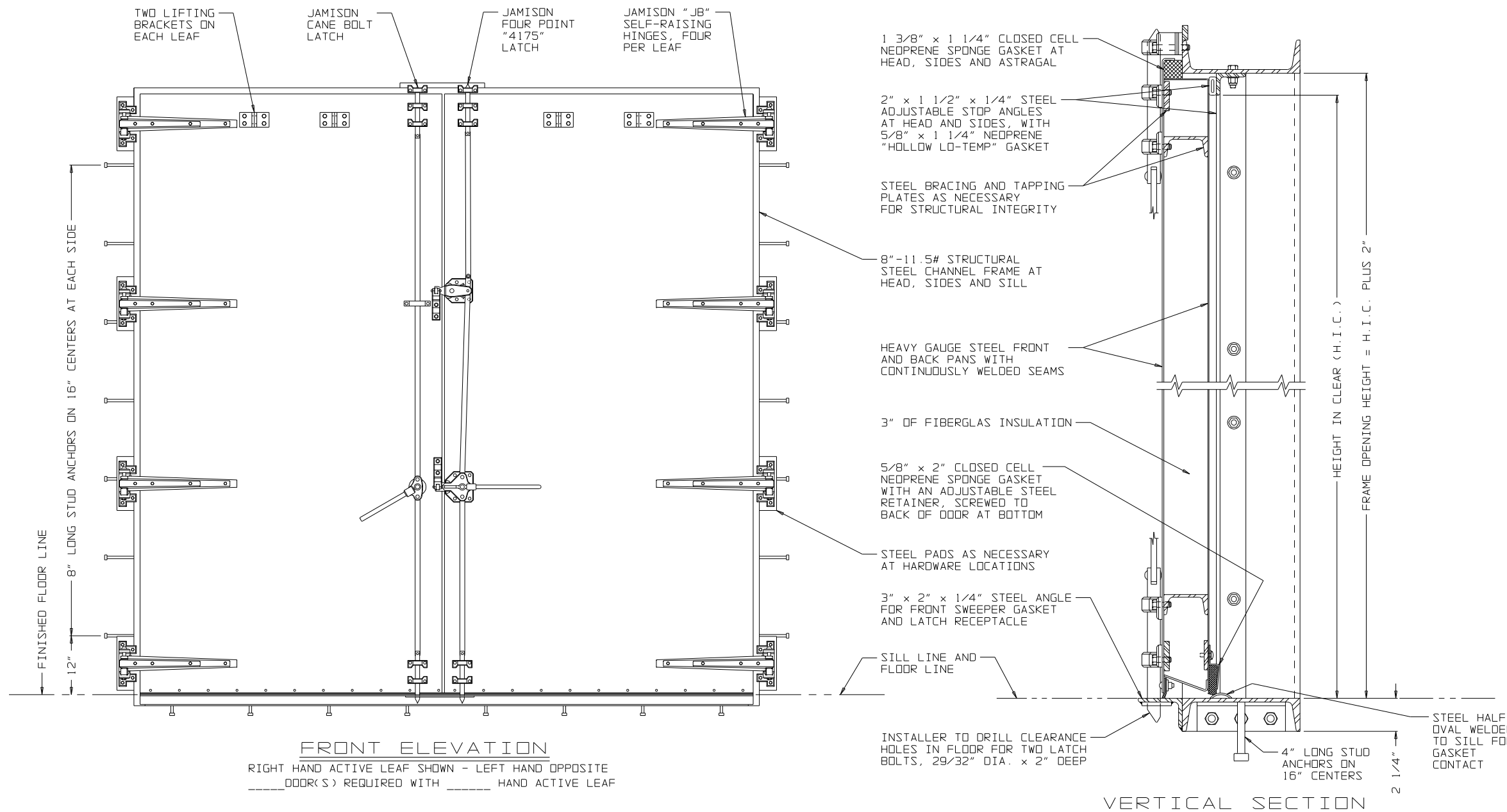


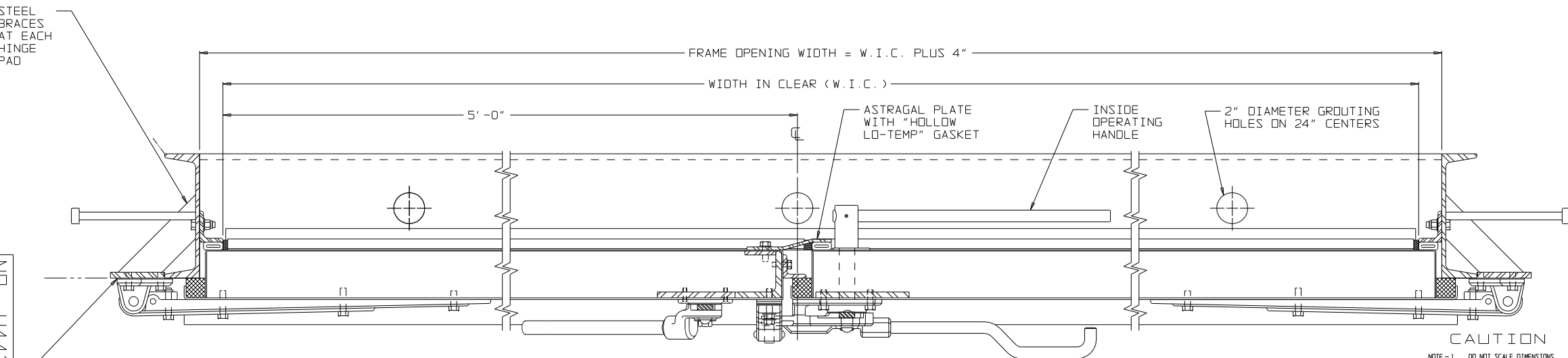
NOTES:

1. HARDWARE - CORROSIVE PROTECTIVE FINISH
 - ONE - FOUR POINT INTERCONNECTED "4175" SERIES LATCH WITH FRONT AND BACK OPERATION.
 - EIGHT - "JB" SELF-RAISING RIGID HINGE.
 - ONE - HANDLE OPERATED INTERCONNECTED CANE BOLT.
 - FOUR - LIFTING BRACKETS
 - FOUR - ERECTION FEET (NOT SHOWN)
2. DOOR AND FRAME (NOT HARDWARE) TO RECEIVE ONE STANDARD PRIME COAT SYSTEM. FINISH PAINTING, BY OTHERS, AT JOB SITE.
3. DOOR AND FRAME TO BE FACTORY ASSEMBLED AND INSPECTED, THEN DISMANTLED AS NECESSARY FOR SHIPMENT. FIELD RE-ASSEMBLY BY DOOR INSTALLER.
4. FRAME PROVIDED WITH CLIP ANGLES AT CORNERS FOR FIELD RE-ASSEMBLY. INSTALLER TO SEAL FRAME JOINTS AS NECESSARY TO MEET ACOUSTICAL REQUIREMENTS.
5. ALL WELDS FOR DOOR PAN SEAMS, AND FOR JOINING PANS TOGETHER, TO BE CONTINUOUS. INTERNAL FRAMING AND BRACING TO BE STRUCTURALLY WELDED.
6. INSTALLER TO INSTALL FRAME PLUMB, TRUE AND SQUARE, WITHIN A DIAGONAL TOLERANCE OF $\pm 1/16"$.
7. HEAD CHANNEL MUST NOT BE USED AS A LINTEL.
8. FLOOR LINE IN WAY OF DOOR SWING AREA MUST BE LEVEL WITH OR BELOW DOOR SILL LINE.
9. HANDLE DOOR AND FRAME CAREFULLY TO AVOID DAMAGE TO GASKETS.
10. STOP ANGLES TO BE PROTECTED WITH CS-5660-23 GASKET GUARDS DURING SHIPMENT.
11. INSTALLER TO SET DOOR LEAVES IN PLACE UTILIZING THE LIFTING BRACKETS AND ERECTION FEET PROVIDED. HOLD $1/2"$ GAP BETWEEN FRONT PANELS OF DOOR. BOLT HINGE BUTTS TO FRAME AT FACTORY PRE-TAPPED HOLES, FOUR PER HINGE BUTT. USE TWO $1/16"$ SHIMS UNDER EACH HINGE BUTT FOR INITIAL SETTING. TIGHTEN BOLTS. REMOVE ERECTION FEET AND CHECK DOOR SWING ACTION. CORRECT ANY ALIGNMENT PROBLEMS AS NECESSARY. ADJUST REAR STOP ANGLES FOR $1/8"$ GASKET COMPRESSION.



FRONT ELEVATION
 RIGHT HAND ACTIVE LEAF SHOWN - LEFT HAND OPPOSITE
 DOOR(S) REQUIRED WITH _____ HAND ACTIVE LEAF

VERTICAL SECTION



HORIZONTAL SECTION

CAUTION
 NOTE-1. DO NOT SCALE DIMENSIONS.
 NOTE-2. DO NOT SCALE BUYS. BUY SIZE AND DESIGN BY OTHERS, GOVERNED BY DOOR SIZE, WALL CONSTRUCTION AND CEILING HEIGHT.
 NOTE-3. GREATER CLEARANCE MAY BE REQUIRED AT SIDES AND/OR HEAD BY CERTAIN JOB CONDITIONS SUCH AS HIGHER SILL BEVEL OR OBSTRUCTIONS NECESSITATING COCKING OR TILTING FRAME INTO OPENING, ETC.

CUSTOMER:		JOB NAME:	
SCALE(S) NONE	DRAWN		
DATE 10-06-95	WBN		
CHECKED	APPROVED		
JAMISON DOOR COMPANY P.O. BOX 70 HAGERSTOWN, MARYLAND 21741		TITLE	S.T.C. 49 SOUND REDUCTION DOUBLE DOOR
		REV. DATE BY	NO. H4424024

NO. H4424024