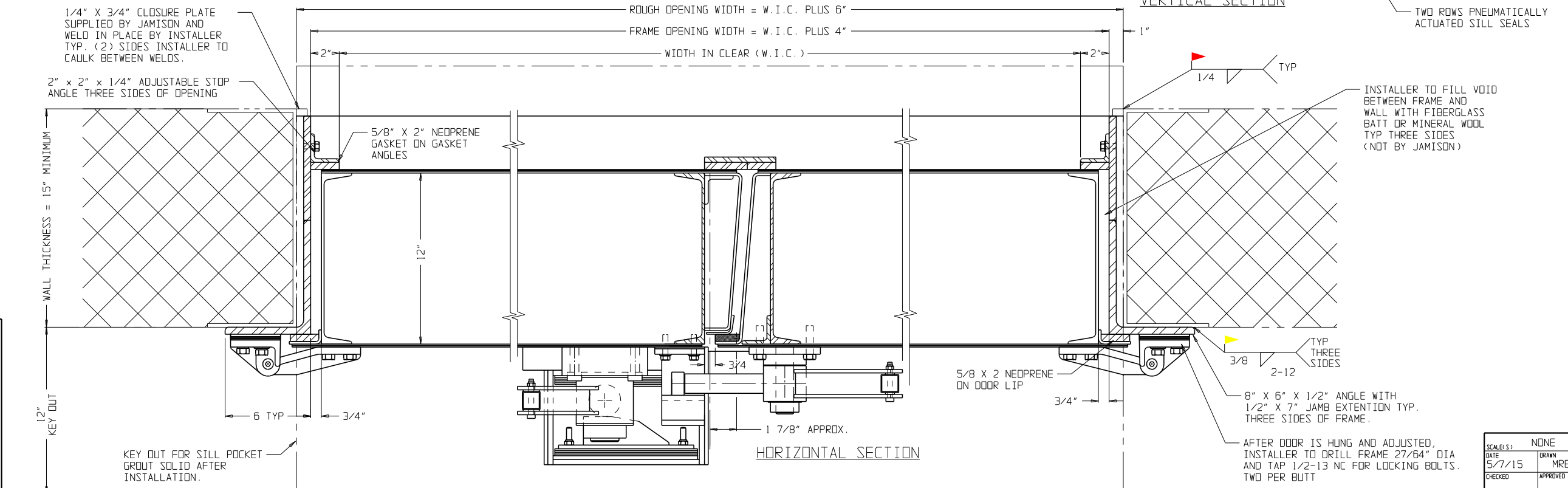


- NOTES:**
1. INSTALL FRAME PLUMB, TRUE AND SQUARE TO A DIAGONAL TOLERANCE OF +/- 1/16".
  2. FLOOR LINE IN SWING AREA TO BE AT OR BELOW SILL LINE
  3. FRAME HEAD MEMBER NOT TO BE USED AS A LINTEL
  4. DOOR AND FRAME TO BE SHIPPED AT THE SAME TIME
  5. FRAME TO BE DISASSEMBLED FOR SHIPMENT. INSTALLER TO BOLT TOGETHER AT CORNERS.
  6. SPACE DOOR IN FRAME HOLDING 5/8" AT SILL, 3/4" AT ASTRAGAL, AND 3/4" EACH SIDE.
  7. INSTALL 1/2-13NC HEX HEAD BOLTS, FLAT AND LOCK WASHERS IN SLOTTED HOLES IN HINGE BUTT.
  8. ADJUST LATCH KEEPERS FOR 1/8" MAX GASKET COMPRESSION AT ASTRAGAL.
  9. ADJUST ANGLES ON BACK OF DOOR FOR 1/8" MAX GASKET COMPRESSION.
  10. AFTER DOOR IS HUNG AND ADJUSTED, INSTALLER TO DRILL & TAP FOR 1/2-13NC X 1-1/2" LG HEX HEAD BOLTS IN ROUND HOLES, TWO PER BUTT, TO LOCK HINGE BUTTS IN PLACE
  11. ADJUST SHIMS AT SILL LATCH POINTS TO INCREASE COMPRESSION OF SILL GASKET AS REQ'D.
  12. CAREFULLY EXAMINE ALL GASKETS, CORNERS AND SEAMS FOR GAPS. TRIM GASKETS TO BUTT TIGHTLY AND CAULK AS REQ'D FOR SOUNDPROOF SEAL.
  13. DOOR AND FRAME TO HAVE ONE COAT ZIN-X-IDE PRIMER. FINISH PAINT NOT BY JAMISON.
  14. ESTIMATED DOOR LEAF WEIGHT = 40 LBS./SQ.FT.
  15. DOOR CONSTRUCTED OF STEEL SHEET AND SHAPES, WITH FIBERGLASS FILL.



**CUSTOMER NOTE**

"These drawings illustrate our understanding of the requirements of your order. We submit them to you for the purpose of securing complete approval of quantities, types, sizes, dimensions, specifications and interpretations. The return of these drawing to us with instructions to proceed, or subsequent instructions to that effect shall constitute complete approval."

SCALE(S)	NONE	JOB NAME	SOUND REDUCTION AND SPECIAL SALES
DATE	5/7/15	DRAWN	MRB
CHECKED		APPROVED	
JAMISON DOOR COMPANY P. O. BOX 70 HAGERSTOWN, MARYLAND 21741		TITLE	DOUBLE SWING STC "59" SOUND REDUCTION DOOR
ALL RADII TOLERANCE ON FRACTIONAL DIMENSIONS EXCEPT AS NOTED TOLERANCE ON DECIMAL DIMENSIONS EXCEPT AS NOTED		TR	DATE
		BY	REVISIONS
		SUBJECT	

NO. H4424028

NO. H4424028