

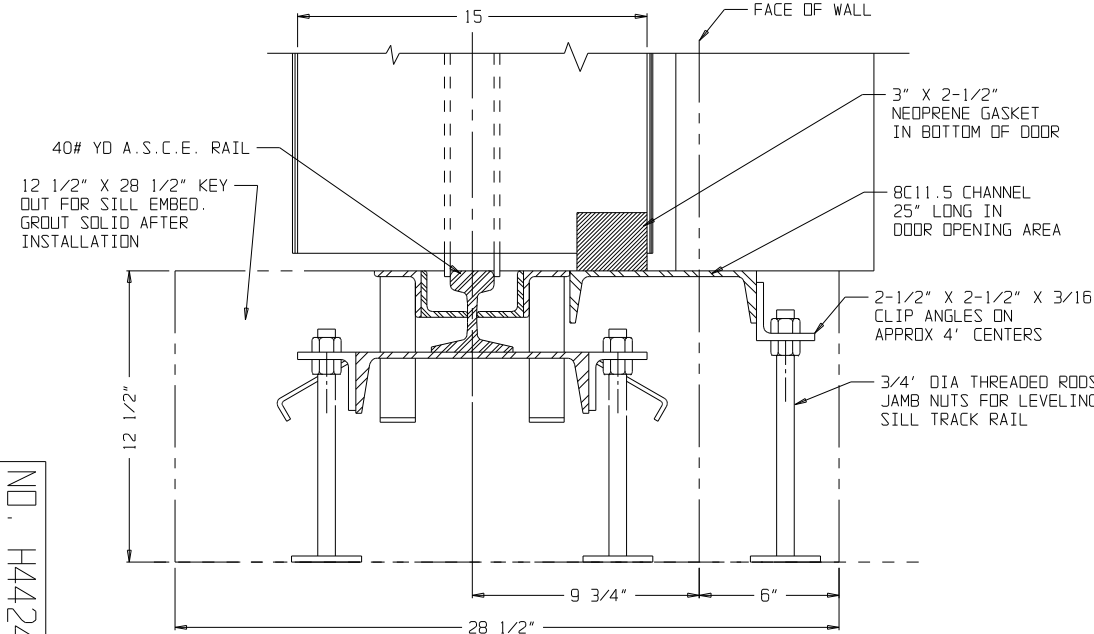
REGULATED AIR SUPPLY LINE AND ELECTRICAL SUPPLY LINE. WIRE, WIRING AND PIPING NOT BY JAMISON.

460 VOLT, 60 Hz, 3 PHASE POWER SUPPLY LINE. CONDUIT, WIRE AND WIRING NOT BY JAMISON

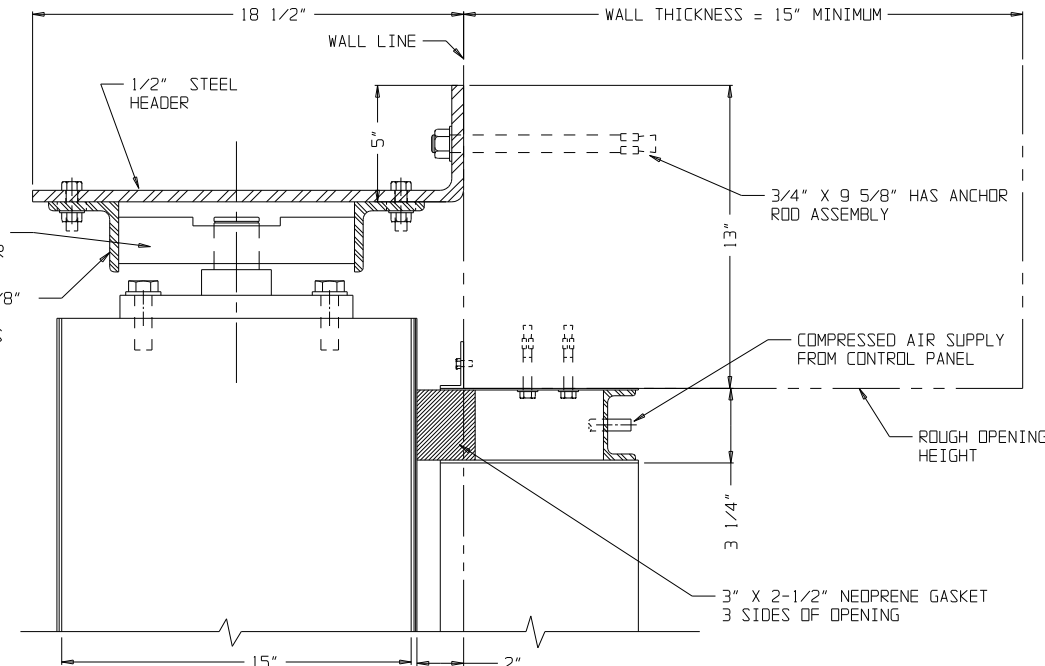
90 PSI COMPRESSED AIR SUPPLY LINE. NOT BY JAMISON.

CONTROL PANEL INSTALLER TO LOCATE AT OWNERS' PREFERENCE. (FOR SAFETY REASONS PANEL SHOULD BE LOCATED WHERE DOOR IS WITHIN SIGHT OF OPERATOR.)

PUSH BUTTON STATION OPEN - CLOSE - STOP

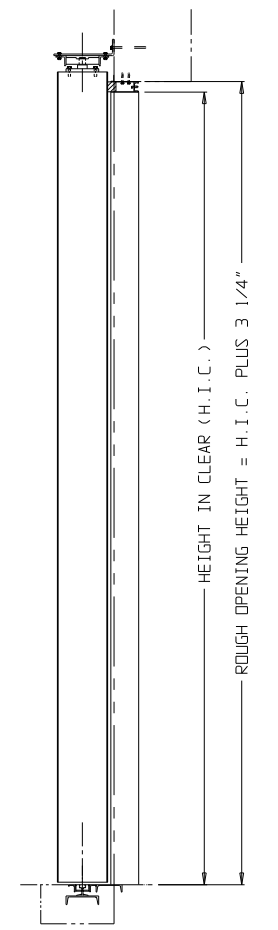


SECTION "A - A"
SILL DETAILS



SECTION "B - B"
HEAD DETAILS

CUSTOMER NOTE
 These drawings illustrate our understanding of the requirements of your order. We submit them to you for the purpose of securing complete approval of quantities, types, sizes, dimensions, specifications and interpretations. The return of these drawing to us with instructions to proceed, or subsequent instructions to that effect shall constitute complete approval.



VERTICAL SECTION

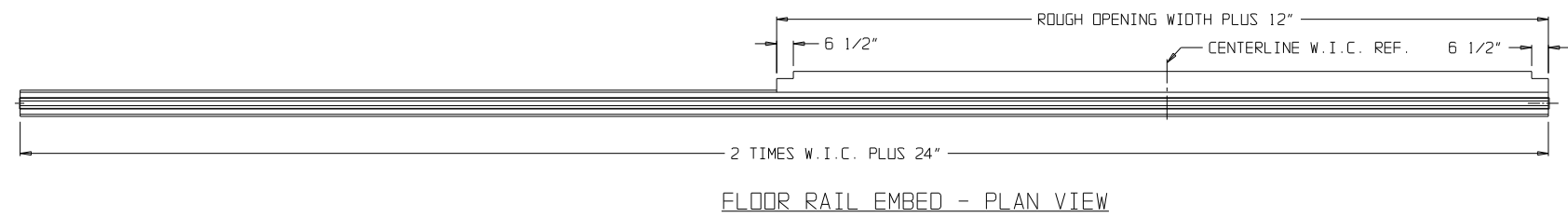
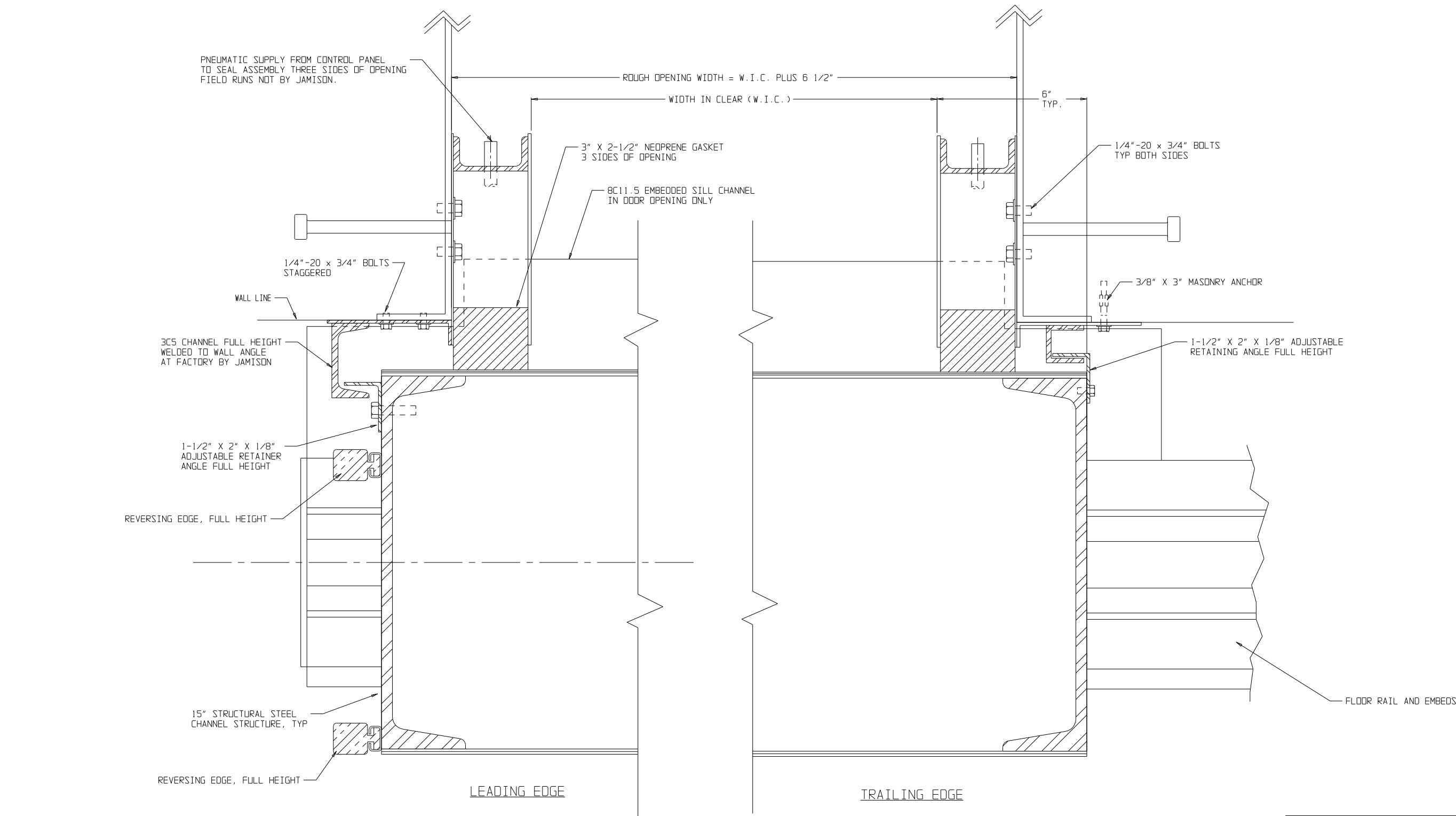
NOTES:

- DOOR CONSTRUCTION: 15" THICK CHANNEL WITH MINIMUM 12 GA SKINS FRONT AND 16 GA SKINS BACK WITH FIBERGLASS FILL BETWEEN.
- DOOR SPLIT HORIZONTALLY AND MUST BE RE-ASSEMBLED AT JOBSITE BY INSTALLING CONTRACTOR.
- ESTIMATED DOOR LEAF WEIGHT = 50 LBS./SQ.FT. ESTIMATED SILL ASSEMBLY WEIGHT = 60 LBS. PER LINEAL FOOT. ACTUAL WEIGHT WILL BE STATED AT SHIPMENT.
- DOOR AND HEADER ASSEMBLY TO RECEIVE PRIMER COAT OF #360 ZIN-X-IDE PRIMER TO A MIN. DRY FILM THICKNESS OF 1.5 MIL. FINISH PAINT NOT BY JAMISON.
- DOOR SECTIONS SUPPLIED WITH LIFTING BRACKETS AND ERECTING FEET (NOT SHOWN). REMOVE AFTER INSTALLATION AND REPLACE BOLTS IN HOLES.
- ELECTRICAL DATA: 460 VOLTS, 3 PHASE, 60 HZ.
- REVERSING EDGE LOCATED ON LEADING EDGE OF LEAF FULL HEIGHT WILL RETURN THE DOOR TO THE FULL OPEN POSITION WHEN CONTACTED BY AN OBSTRUCTION.
- CONTROL PANEL TO BE EQUIPPED WITH THREE PUSH BUTTON STATIONS, LABELED "OPEN" "CLOSE" AND "STOP".
- INSTALLING CONTRACTOR TO CONNECT ELECTRICAL POWER THROUGH FUSED DISCONNECT SWITCH NOT BY JAMISON.
- FLOOR IN DOORWAY AND SLIDE AREA TO BE LEVEL WITH SILL LINE.
- WALL AND ROUGH OPENING TO BE PLUMB, TRUE & SQUARE.
- AFTER DOOR IS INSTALLED AND OPERATING, INSPECT GASKETS FOR MINIMUM 1/16" COMPRESSION PERIMETER OF OPENING AND ACROSS SILL. INSPECT CORNERS AND CAULK ANY ACOUSTICAL LEAKS.
- DOOR AND HARDWARE DESIGNED TO WITHSTAND A PRESSURE OF 150 P.S.F. AGAINST THE FRONT OR BACK.

SCALE(S)	NONE	JOB NAME	
DATE	5/8/15	DRAWN	MRB
CHECKED	APPROVED	TITLE	BOTTOM ROLLER
JAMISON DOOR COMPANY P.O. BOX 70 HAGERSTOWN, MARYLAND 21741		HORIZONTAL SLIDING STC "59" SOUND REDUCTION DOOR	
NO. H4424029		SHT. 1 OF 2	

NO. H4424029 SH 1

ALL RAU1 EXCEPT AS NOTED
 TOLERANCE ON FRACTIONAL DIMENSIONS EXCEPT AS NOTED
 TOLERANCE ON DECIMAL DIMENSIONS EXCEPT AS NOTED



CUSTOMER NOTE
 "These drawings illustrate our understanding of the requirements of your order. We submit them to you for the purpose of securing complete approval of quantities, types, sizes, dimensions, specifications and interpretations. The return of these drawing to us with instructions to proceed, or subsequent instructions to that effect shall constitute complete approval."

NO. H4424029 SH. 2

SCALE(S)	NONE	JOB NAME	SOUND REDUCTION AND SPECIAL SALES
DATE	5/8/15	DRAWN	MRB
CHECKED		APPROVED	
JAMISON DOOR COMPANY P. O. BOX 70 HAGERSTOWN, MARYLAND 21741		TITLE	BOTTOM ROLLER HORIZONTAL SLIDING STC "59" SOUND REDUCTION DOOR
		REVISED	
		DATE	
		BY	
		SUBJECT	

ALL RAU1 EXCEPT AS NOTED
 TOLERANCE ON FRACTIONAL DIMENSIONS EXCEPT AS NOTED
 TOLERANCE ON DECIMAL DIMENSIONS EXCEPT AS NOTED

NO. H4424029 SH. 2 OF 2