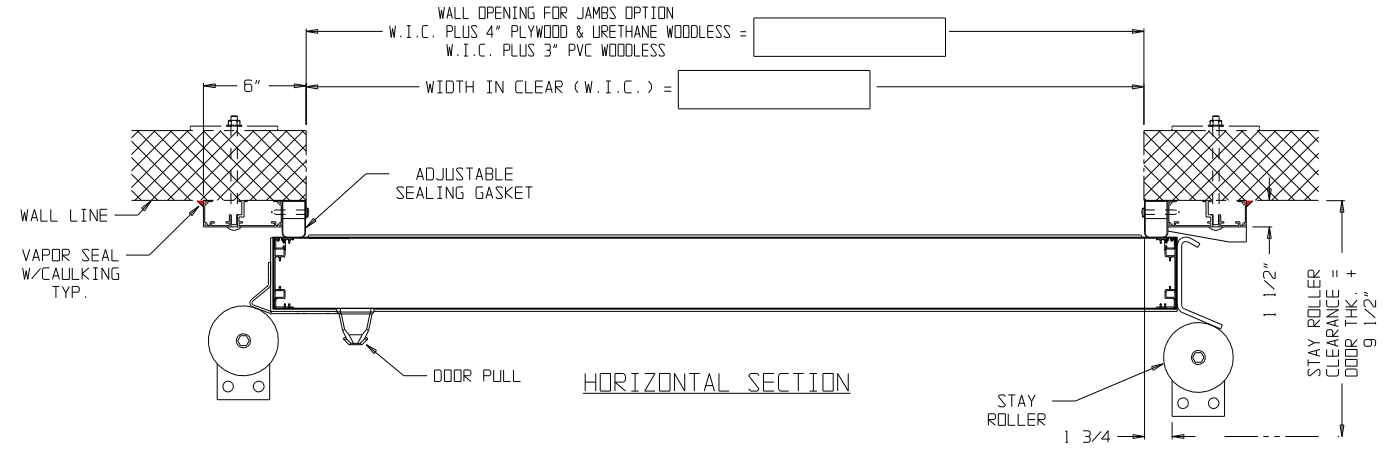
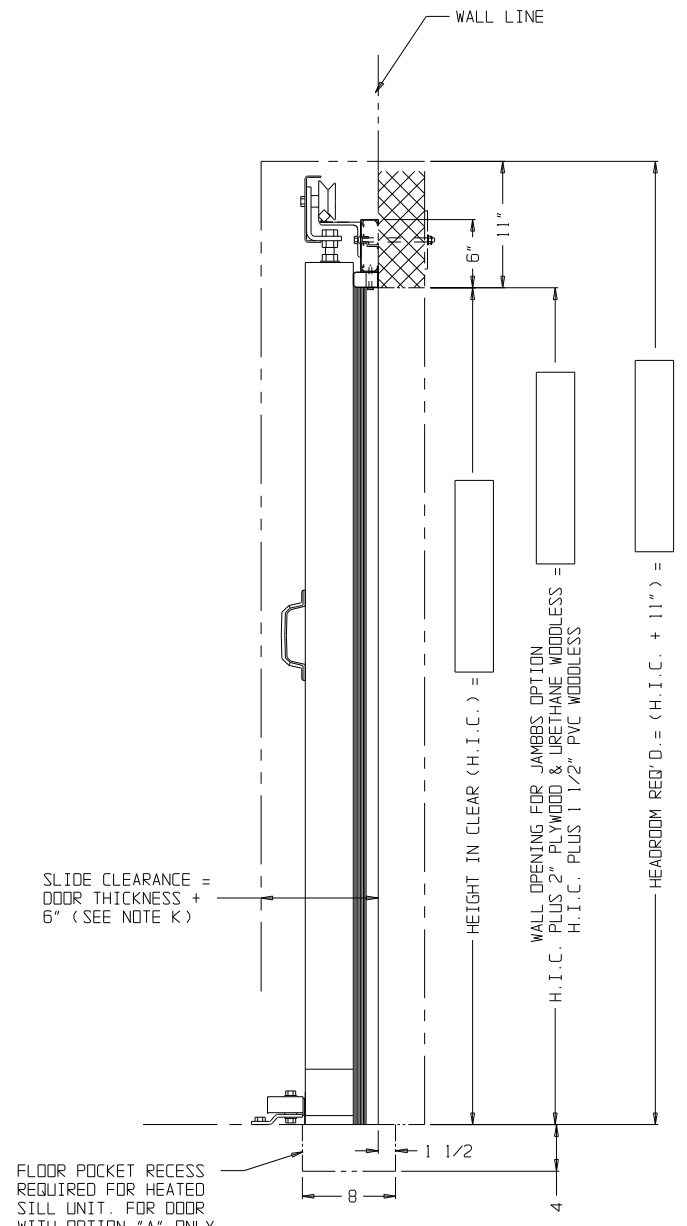


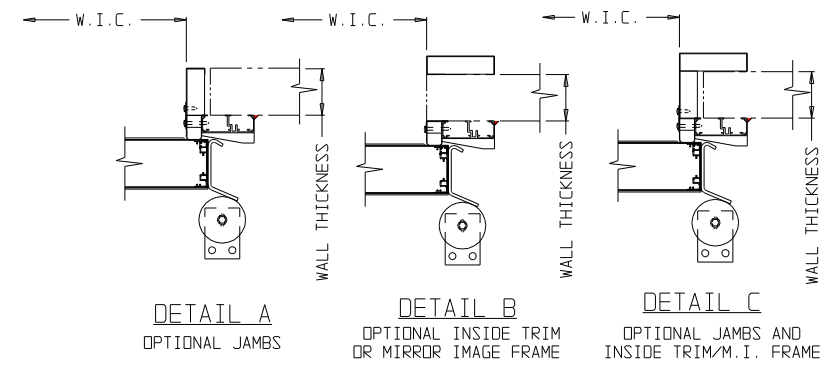
FRONT ELEVATION
R.H. SLIDE DOOR SHOWN - L.H. SLIDE DOOR OPPOSITE



HORIZONTAL SECTION



VERTICAL SECTION



- NOTES:**
- DOOR PANEL "JAMIFOAM" POLYURETHANE INSULATED.
R32 @ 20* F 4" INSULATED
R48 @ 20* F 6" INSULATED
A. COOLER DOOR 4" STD. _____
B. FREEZER DOOR 4" STD. _____
C. FREEZER DOOR 6" STD. _____
 - DOOR #26 GAUGE GALVANIZED STUCCO EMBOSSED STEEL WITH BAKED-ON WHITE ENAMEL FINISH. FRAME: ALUMINUM STRUCTURE WITH BAKED-ON WHITE FINISH. _____
OPTIONAL:
A. GALVANIZED STUCCO EMBOSSED STEEL DOOR W/GRAY FINISH FRAME: ALUMINUM STRUCTURE _____
B. STAINLESS STEEL DOOR WITH STAINLESS STEEL CLAD FRAME _____
C. PAINTED STEEL DOOR AND FRAME - COLOR: _____
D. STUCCO ALUMINUM DOOR WITH GRAY FINISH ALUMINUM FRAME _____
E. WOOD STRUCTURE FRAME - CLAD WITH #24 GAUGE STEEL _____
F. OTHER, SPECIFY _____
 - DOOR HARDWARE AND TRACK TO HAVE CORROSION PROTECTIVE FINISH - STANDARD _____
OPTIONAL - CHROME/STAINLESS HARDWARE _____
 - FRAME FASTENERS
3/8" CARRIAGE BOLTS FOR 4" PANEL WALLS, STANDARD. _____
8" LONG STANDARD, 10" LONG WITH MIRROR IMAGE OR INSIDE TRIM.
OPTIONAL:
A. 3/8" X 4" LONG LAGS _____
B. 3/8" DIA ALL THREAD THRU ROD _____
C. STAINLESS FINISH (STANDARD WITH STAINLESS FRAMES) _____
D. OTHER (SPECIFY WALL THICKNESS) _____
 - INSTALLER TO CONNECT ELECTRICAL POWER TO END OF HEADER ON FREEZER DOORS (120 V.) THROUGH DISCONNECT SWITCHES. SWITCHES AND WIRING NOT BY JAMISON.
 - FREEZER DOORS - FROSTOP AT FOUR SIDES OF DOOR, STANDARD.
 - OPTIONS:
A. "FROSTOP" - 4 SIDES OF DOOR AND 4 SIDES OF FRAME. _____
B. JAMBS, SPECIFY WALL THICKNESS: _____
C. INSIDE TRIM (1-1/2" X 6" STD.) _____
D. MIRROR IMAGE FRAME _____
E. JAMB & TRIM CONSTRUCTION
PLYWOOD METAL CLAD _____
WOODLESS URETHANE _____
WOODLESS PVC _____
F. DOOR SEALED TO MEET M.I.D. _____
G. KICKPLATE, DOOR:
ALUMINUM DIAMOND TREAD, HEIGHT: _____
STAINLESS STEEL, GAUGE: _____, HEIGHT: _____
H. KICKPLATE, FRAME -
ALUMINUM DIAMOND TREAD, HEIGHT: _____
STAINLESS STEEL, GAUGE: _____, HEIGHT: _____
I. LEADING EDGE GUARD _____
20 GA. STAINLESS STEEL _____ HEIGHT _____
20 GA. GALVANIZED _____ HEIGHT _____
* J. PADLOCKING (SEE SCHEDULE) _____
K. VIEW WINDOWS, SIZE 12" X 14" STD.
2 LAYER (COOLER) _____
3 LAYER (FREEZER) _____
OPTIONAL HEAT IN ABOVE _____
OTHER _____
+ L. JAMISSTAND SUPPORT SYSTEM _____
DRAWING NUMBER _____
M. WICKET DOOR, - SIZE _____
N. PULL BAR H4475009 _____
O. HIGH HEAT INSULATION _____
P. COIL CORD DROP LOOP _____
Q. HEAVY DUTY STAY ROLLERS _____
R. SHORT HEADER _____
S. LARGE REAR PULL _____
T. DOE COMPLIANT (FREEZERS ONLY) _____
U. OTHER _____

CAUTION
NOTE-1. DO NOT SCALE DIMENSIONS.
NOTE-2. DO NOT SCALE BUCKS. BUCK SIZE AND DESIGN BY OTHERS GOVERNED BY DOOR SIZE, WALL CONSTRUCTION AND CEILING HEIGHT.
NOTE-3. GREATER CLEARANCE MAY BE REQ'D. AT SIDES AND/OR HEAD BY CERTAIN JOB CONDITIONS SUCH AS HIGHER SILL BEVEL OR OBSTRUCTIONS NECESSITATING COCKING OR TILTING FRAME INTO OPENING, ETC.
NOTE-4. BUCK SUGGESTIONS PER DRAWING BJ-9044-33.

+ JAMISSTAND SUPPORT SYSTEMS REQUIRE MORE CLEARANCE THAN SHOWN - SEE DWG. BH-4404106

DOOR NO.	QUAN.	SWING		SIZE IN CLEAR		*PADLOCKING PROVISIONS				TEMPERATURE CONDITIONS		
		R.H.	L.H.	W.I.C.	H.I.C.	NO	SAFETY RELEASE		FRONT	BACK	FRONT	BACK
							YES	NO				

SCALE(S)		JOB NAME		DATE		DATE		DATE	

NO. H4404873H

NO. H4404873H