

### JAMOCLEAR®

SWINGING  
SEE-THRU  
PLASTIC  
COOLER DOOR



Right Hand  
Swing Door Shown

#### COOLER DOOR SPECIFICATIONS:

Supply where indicated on plans Jamison Jamoclear® Plastic Cooler Door.

Door panel to be constructed of 1" thick clear, transparent cast acrylic, Type #1 Grade A in accordance with Federal Specification L-P-391C. Bottom of door to be protected on front and back with #16 gauge stainless steel toe plates.

Frame to be metal clad on all exposed surfaces with #24 gauge stainless steel.

Gasket at sides and head of frame to be special extruded synthetic rubber. Sill gasket to be sweep type.

Hardware to be chrome-plated and consist of three hinges and top mounted door closer.

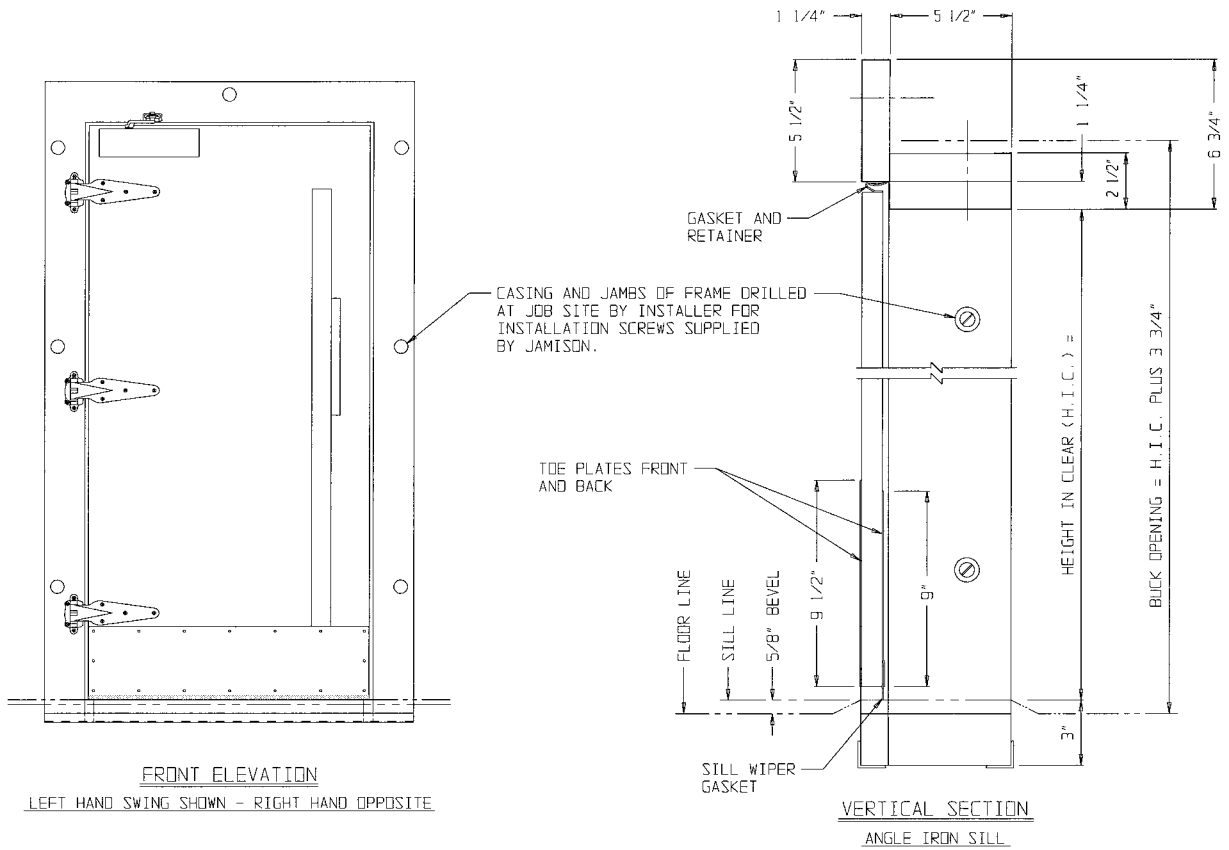
Stainless steel 5'0" long door pull on front. Back push plate to be #16 gauge stainless steel.

#### SPECIAL NOTE:

Door is designed for cooler operation with temperatures of plus 33° F. and above with door mounted on warm side of wall.

#### OPTIONS: (SPECIFY which options are desired):

1. Frame protection - where abuse and abrasion can occur from handtruck traffic, frame can be protected with #16 gauge stainless steel kickplates.
2. Locking provision - furnish lock on back of door with thumb turn on back and cylinder on front of door.
3. Deep jambs.
4. Inside trim.



**INSTALLATION POINTS:**

1. Bucks should be installed true, plumb and square and of sufficient size to accommodate door weight. Buck suggestions available on request.
2. Wood bucks and back of door frame should be painted with a suitable preservative to protect against moisture penetration into wood.
3. All bolts, lags and joints between buck and door frame should be vapor sealed with oil-suspended, nonhardening, waterproof caulking compound or similar material.



Jamison Door Company • P. O. Box 70 • Hagerstown, MD 21741-0070  
 Call Toll Free • 1-800-532-3667 or 301-733-3100  
 FAX: 301-791-7339  
 INTERNET: <http://www.jamison-door.com>  
 E-MAIL: [sales@jamison-door.com](mailto:sales@jamison-door.com)