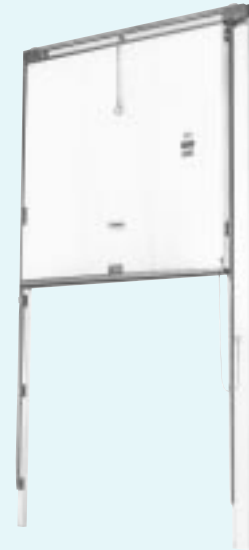


MARK IV™ VERTICAL SLIDING MANUALLY OPERATED DOOR

- *White Metal Clad Finish*
- *Five Year Warranty*



COOLER DOOR SPECIFICATIONS:

Supply where indicated on plans Jamison Mark IV™ Manual Vertical Sliding Cooler Door.

Door panel to have aluminum extruded structure and to be metal clad with #26 gauge white pre-painted stucco embossed steel front and back with reinforcement for hardware attachment. Frame to be constructed of aircraft alloy aluminum extrusion with white painted finish.

Door leaf to be filled with 4" of Jamifoam non-CFC polyurethane insulation with an R value of 28 at 40° F. Frame to be insulated with polystyrene inserts.

Adjustable gasket at sides and head of door frame to be polyester reinforced. Sill gasket on bottom of door to be sweep type.

Hardware and track to have protective coat-

ing against corrosion Doors to be equipped with chain operated top latch. Galvanized 3" track formed of 12 Ga. steel to be adjustable for tight gasket seal. Wedge-in track design gives "down and in" motion to assure tight seal without cams or levers.

Door to be operable from front side only. (ARCHITECT NOTE: Specify if back operation required.)

FREEZER DOOR SPECIFICATIONS:

Freezer door specifications to be same as cooler door except for these substitutions and additions:

Supply where indicated on plans Jamison Mark IV™ Manual Vertical Sliding Freezer.

Provide Frostop heater cables in the sides, head, and bottom of door. Complete device to be assembled, ready for connection to 120 volt, 60 Hertz, single phase AC line.

SPECIAL NOTES:

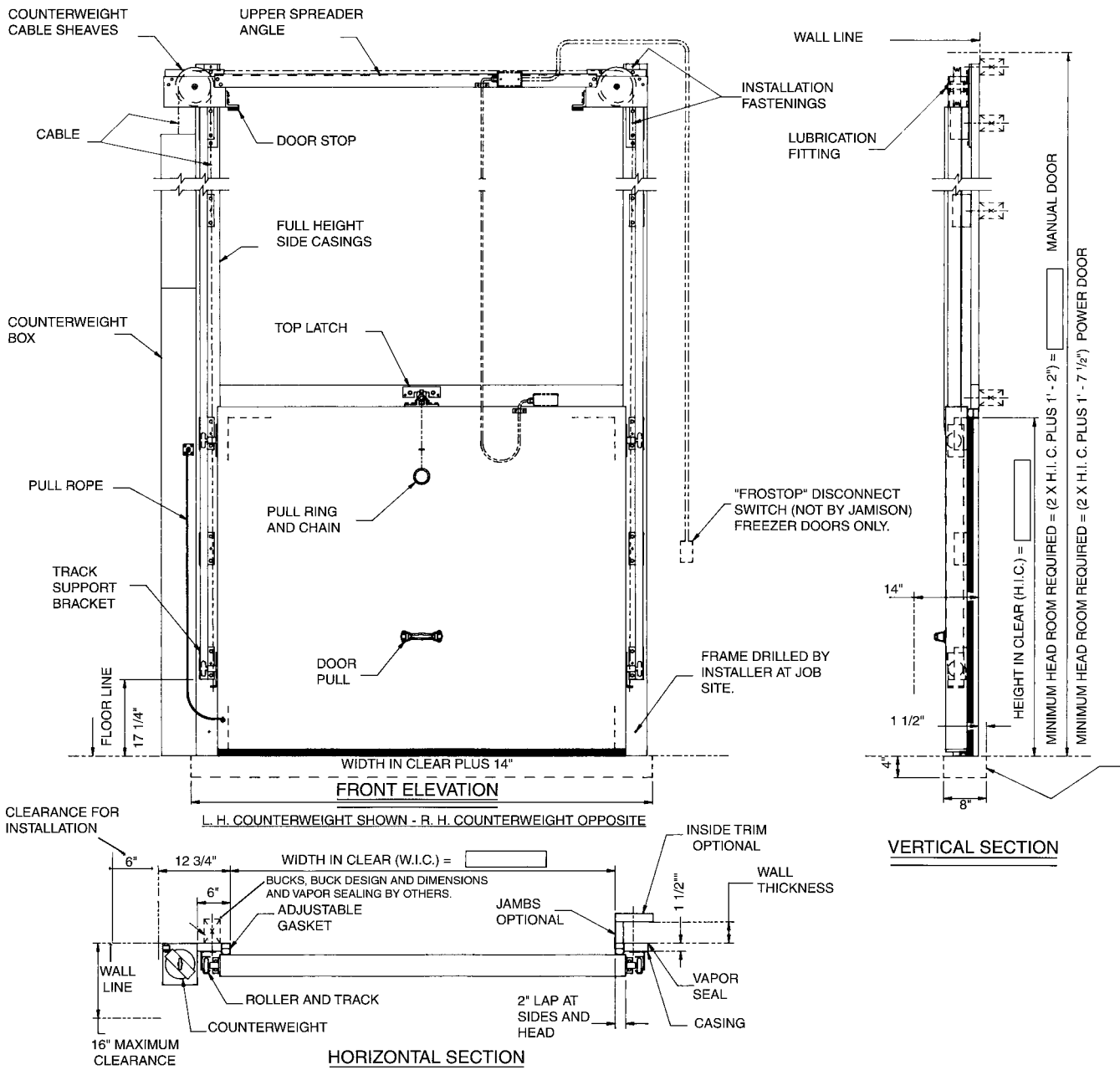
1. Freezer Door is designed for installation in warm room with temperatures above +33° F. If door must be mounted in rooms with temperatures of +32° F. and below, contact factory.
2. When cold room temperature is below -20°F., or temperature difference is more than 90°F., contact factory.

3. If freezer door must be mounted in freezer room, please contact factory for recommendations.

4. Consult the factory before quoting on applications in processing areas where hot or caustic washdown solutions are used.

OPTIONS: (SPECIFY which options are desired):

1. Back Operation
 - a. With locking provisions.
 - b. Without locking provisions.
2. Locking provisions:
 - a. On front-hasps and staple, no back operation.
 - b. On front-hasps and staple, w/back operation.
 - c. On back-key cylinder w/back operation. Manual Door only.
 - d. On back-hasps and staple, w/front operation. Power Door only.
 - e. On back-hasps and staple, no front operation. Power Door only.
3. M.I.D. requirements.
4. Power Operation:
 - a. Factory assembled and tested.
 - b. Provisions for future installation.
5. Other Finishes:
 - a. Galvanized Painted Steel (specify color)
 - b. Stainless Steel
 - c. Stucco Embossed Aluminum
 - d. Galvanized Steel
6. View Windows: (contact factory for specific recommendations.) 12" x 14" sealed glass unit.
 - a. Cooler Door-2 layer, 1" thick.
 - b. Freezer Door-3 layer, 1" thick with 120 V.A.C. heat film.
7. Jambs.
8. Inside trim.
9. 6" of insulation for freezer door (R value 42).
10. Swinging wicket door.



FREEZER DOOR FURNISHED WITH FROSTOP HEATER CABLES.

INSTALLATION POINTS:

1. Bucks should be installed true, plumb and square and of sufficient size to accommodate door weight. Wood bucks should be painted with a suitable preservative to protect against moisture penetration into wood.
2. All lags, screws and joints between buck and door frame should be vapor sealed with silicone caulking.
3. Installation instructions are shipped with the door. For buck suggestions and guard post locations to protect door and frame, drawings available on request.
4. For freezer door, provide separate 120 volt, 60 Hertz, single phase line complete with key switch (by others) for connection to Frostop circuit.
5. After erection and adjustment of door and frame for plumbness and squareness, final mechanical adjustments should be made for tight seal.



Jamison Door Company • P. O. Box 70 • Hagerstown, MD 21741-0070
 Call Toll Free • 1-800-532-3667 or 301-733-3100
 FAX: 301-791-7339
 INTERNET: <http://www.jamison-door.com>
 E-MAIL: sales@jamison-door.com