

MARK IV™ VERTICAL SLIDING PACKAGE PASSING DOOR

- *White Metal Clad Finish*
- *Five Year Warranty*

Stainless Steel Freezer Door Shown - White Stucco Embossed Metal Clad Door is Standard



COOLER DOOR SPECIFICATIONS:

Supply where indicated on plans Jamison Mark IV™ Vertical Sliding Package Passing Cooler Door.

Door panel to have aluminum extruded structure and to be metal clad with #26 gauge white pre-painted stucco embossed steel front and back with reinforcement for hardware attachment. Frame to be furnished with white painted finish.

Flat top of sill to have #16 galvanized steel sill plate.

Door to be filled with 4" of Jamifoam non-CFC polyurethane insulation with an R value of 28 at 40° F.

Gaskets at four sides of door to be grease resistant synthetic skin with resilient sponge core.

Hardware, track, and counterweight covers to have protective coating against corrosion. Closure to be automatic by down-and-in motion without cams or levers. Door to lock in sealed position with automatic top latch. Counterweight to hold door in open position without latching device.

FREEZER DOOR SPECIFICATIONS:

Freezer door specifications to be same as cooler door except for these substitutions and additions:

Supply where indicated on plans Jamison Mark IV™ Vertical Sliding Package Passing Freezer Door.

Metal cladding on warmer side of door to be applied with all seams sealed and hardware fastenings caulked.

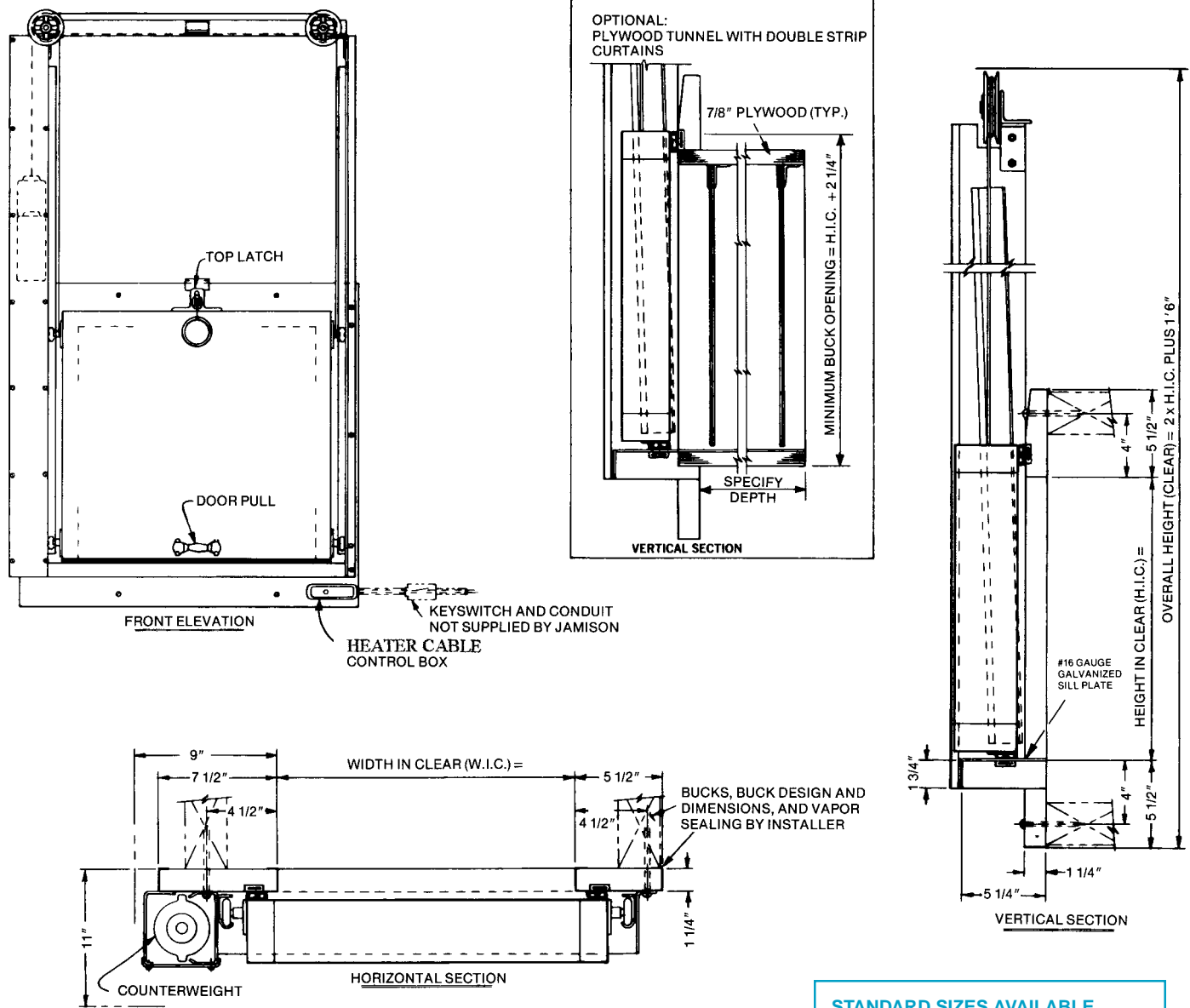
Provide heater cables at the sides, head, and sill at gasket contact areas. Complete device to be assembled, ready for connection to 120 volt, 60 Hertz, single phase AC line.

SPECIAL NOTES:

1. When cold room temperature is below -20°F., or temperature difference is more than 90°F., contact factory.
3. If freezer door must be mounted in freezer room, please contact factory for recommendations.

OPTIONS: (SPECIFY which options are desired):

1. Padlock provisions:
 - a. On front-hasps and staple for padlock by others.
 - b. On back-spring loaded slide bolt for padlock by others.
2. Plywood tunnel up to 30" deep. Metal cladding and sill plate on inside of tunnel to be same as shown in specifications above.
3. Other Finishes:
 - a. Galvanized Painted Steel (specify color)
 - b. Stainless Steel
 - c. Stucco Embossed Aluminum
 - d. Galvanized Steel
4. Double Strip Curtains:
 - a. One set mounted in frame behind cold storage door.
5. If doors to be used in meat processing plants subject to federal and state inspection, metal cladding to be applied per M.I.D. requirements.
6. Two curtains mounted in plywood tunnel in Optional Item 2, one behind door and one at other end of tunnel.



STANDARD SIZES AVAILABLE	
1'6" x 1'6"	2'6" x 3'6"
2'0" x 2'0"	3'0" x 3'0"
2'0" x 2'6"	3'0" x 3'6"
2'6" x 3'0"	4'0" x 4'0"

Other Sizes Available
 Please furnish factory with requirements.

INSTALLATION POINTS:

1. Bucks should be installed true, plumb and square and of sufficient size to accommodate door weight. Buck suggestions available on request.
2. Wood bucks should be painted with a suitable preservative to protect against moisture penetration into wood.
3. All bolts, lags, and joints between buck and door frame should be vapor sealed with oil-suspended, nonhardening, waterproof caulking compound or similar material.



Jamison Door Company • P. O. Box 70 • Hagerstown, MD 21741-0070
 Call Toll Free • 1-800-532-3667 or 301-733-3100
 FAX: 301-791-7339
 INTERNET: <http://www.jamison-door.com>
 E-MAIL: sales@jamison-door.com