

MARK IV™

OVERHEAD

MANUALLY OPERATED DOOR STANDARD LIFT

- *White Metal Clad Finish*
- *Five Year Warranty*



Overhead
High Lift
Door Shown

COOLER DOOR SPECIFICATIONS:

Supply where indicated on plans Jamison Mark IV™ Manual Standard Lift Overhead Cooler Door.

Door panels to have aluminum extruded structure and to be metal clad with #26 gauge white pre-painted stucco embossed steel front and back with reinforcement for hardware attachment. Frame to be constructed of aircraft alloy aluminum extrusion with white painted finish.

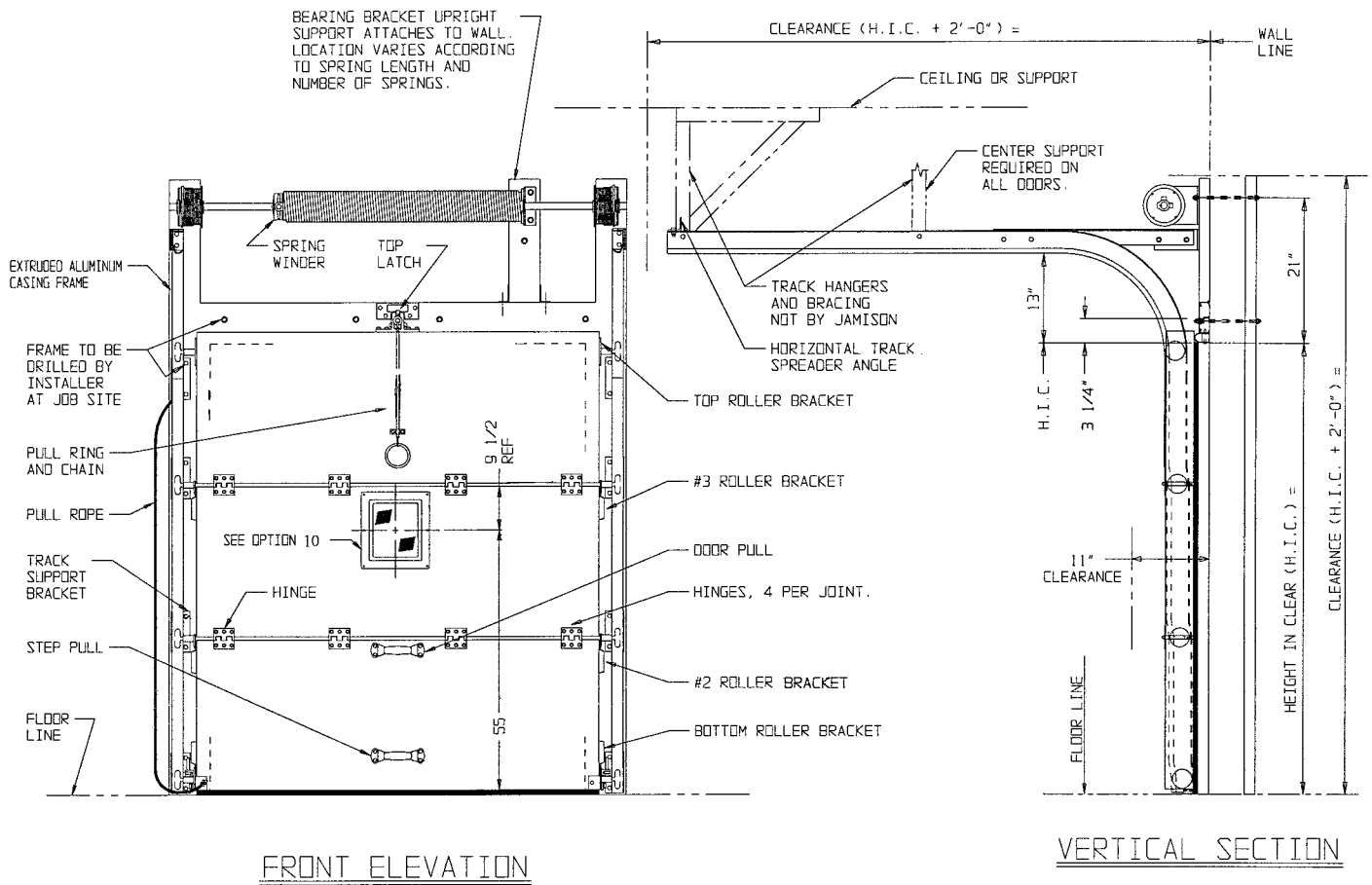
Door leaves to be filled with 4" of Jamifoam non-CFC polyurethane insulation with an R value of 28 at 40° F. Frame to be insulated with polystyrene inserts.

Adjustable gasket at sides and head of frame to be polyester reinforced. Gasket between door leaves to be grease resistant synthetic skin with resilient sponge core. Sill gasket to be looped type.

Hardware and track to have protective coating against corrosion. Doors to be equipped with chain operated top latch. Galvanized 3" track formed of 1/8" steel to be adjustable for tight gasket seal. Wedge-in track design gives "down and in" motion to assure tight seal without cams or levers. Door to be operable from front side only. (ARCHITECT NOTE: Specify if back operation required.)

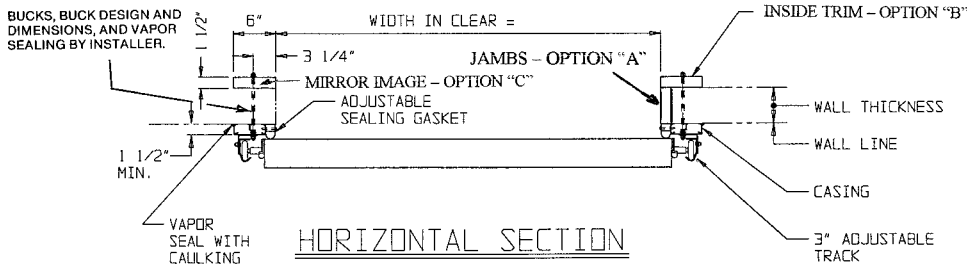
OPTIONS: (SPECIFY which options are desired):

1. Cooler Door - 2" of insulation (R value 14).
2. Freezer Door - Available, contact factory.
3. Back Operation:
 - a. With locking provisions.
 - b. Without locking provisions.
4. Locking provisions:
 - a. On front-hasps and staples.
 - b. On back-key cylinder w/back operation.
5. If doors to be used in meat processing plants subject to federal and state inspection, metal cladding to be applied per M.I.D. requirements.
6. High lift available - contact factory.
7. Power Operation:
 - a. Factory assembled and tested.
 - b. Provisions for future installation.
8. Other Finishes:
 - a. Stainless steel
 - b. Plastic
 - c. Painted steel
 - d. Galvanized Steel
9. Chrome hardware - contact factory.
10. View Windows: (contact factory for specific recommendations.) 12" x 14" sealed glass unit
 - a. Cooler Door - 2 layer, 1" thick
 - b. Freezer Door - 3 layer, 1" thick with 120 V.A.C. heat film.
11. Jambs-specify wall thickness on plans. (see detail, option "A" on back.)
12. Inside trim - (see detail, option "B" on back.)
13. Mirror Image (see detail, option "C" on back.)



FRONT ELEVATION

VERTICAL SECTION



HORIZONTAL SECTION

MANUAL STANDARD LIFT COOLER DOOR SHOWN

INSTALLATION POINTS:

1. Bucks should be installed true, plumb and square and of sufficient size to accommodate door weight. Wood bucks and back of door frame should be painted with a suitable preservative to protect against moisture penetration into wood.
2. All lags, screws and joints between buck and door frame should be vapor sealed with oil-suspended, nonhardening, waterproof caulking compound of similar material.
3. Installation instructions are shipped with the door. For buck suggestions and guard post locations to protect door and frame, drawings available on request.
4. After erection and adjustment of door and frame for plumbness and squareness, final mechanical adjustments should be made for tight seal.



Jamison Door Company • P. O. Box 70 • Hagerstown, MD 21741-0070
 Call Toll Free • 1-800-532-3667 or 301-733-3100
 FAX: 301-791-7339
 INTERNET: <http://www.jamison-door.com>
 E-MAIL: sales@jamison-door.com